



**Overview**  
 Grizzly Creek  
 COWRF-000348  
 9/02/2020  
 Note: highlighted area is within 5 miles of the fire  
 Est. 32,464 as of 8/31

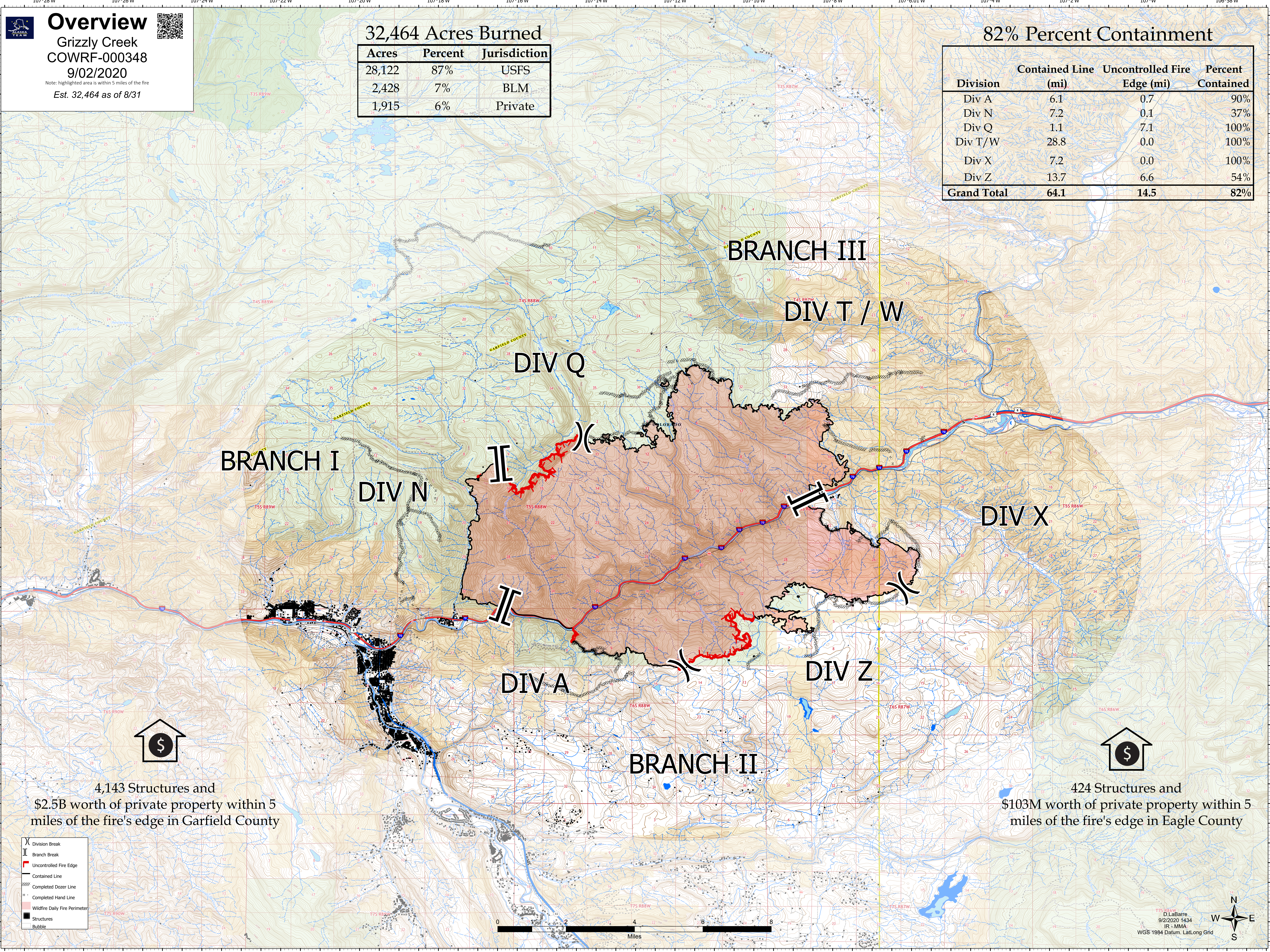



**32,464 Acres Burned**

Acres	Percent	Jurisdiction
28,122	87%	USFS
2,428	7%	BLM
1,915	6%	Private

**82% Percent Containment**

Division	Contained Line (mi)	Uncontrolled Fire Edge (mi)	Percent Contained
Div A	6.1	0.7	90%
Div N	7.2	0.1	37%
Div Q	1.1	7.1	100%
Div T/W	28.8	0.0	100%
Div X	7.2	0.0	100%
Div Z	13.7	6.6	54%
<b>Grand Total</b>	<b>64.1</b>	<b>14.5</b>	<b>82%</b>



BRANCH I

DIV N

DIV Q

BRANCH III

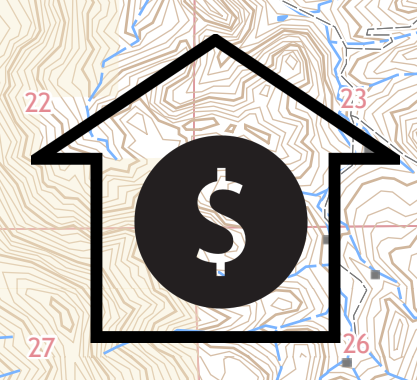
DIV T / W

DIV X

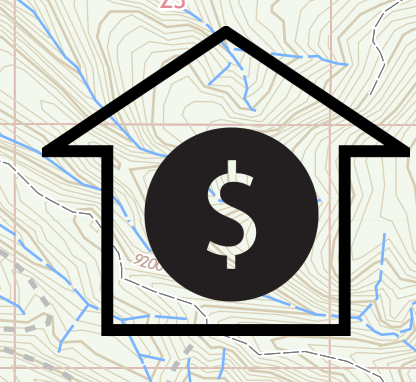
DIV A

DIV Z

BRANCH II

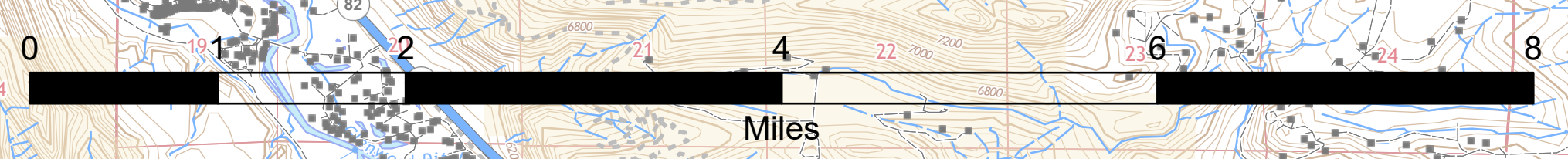


4,143 Structures and  
 \$2.5B worth of private property within 5  
 miles of the fire's edge in Garfield County



424 Structures and  
 \$103M worth of private property within 5  
 miles of the fire's edge in Eagle County

- Division Break
- Branch Break
- Uncontrolled Fire Edge
- Contained Line
- Completed Dozer Line
- Completed Hand Line
- Wildfire Daily Fire Perimeter
- Structures
- Bubble



D. LaBarre  
 9/2/2020 1434  
 IR - MMA  
 WGS 1984 Datum, Lat/Long Grid

