



Briefing

Grizzly Creek

COWRF-000348

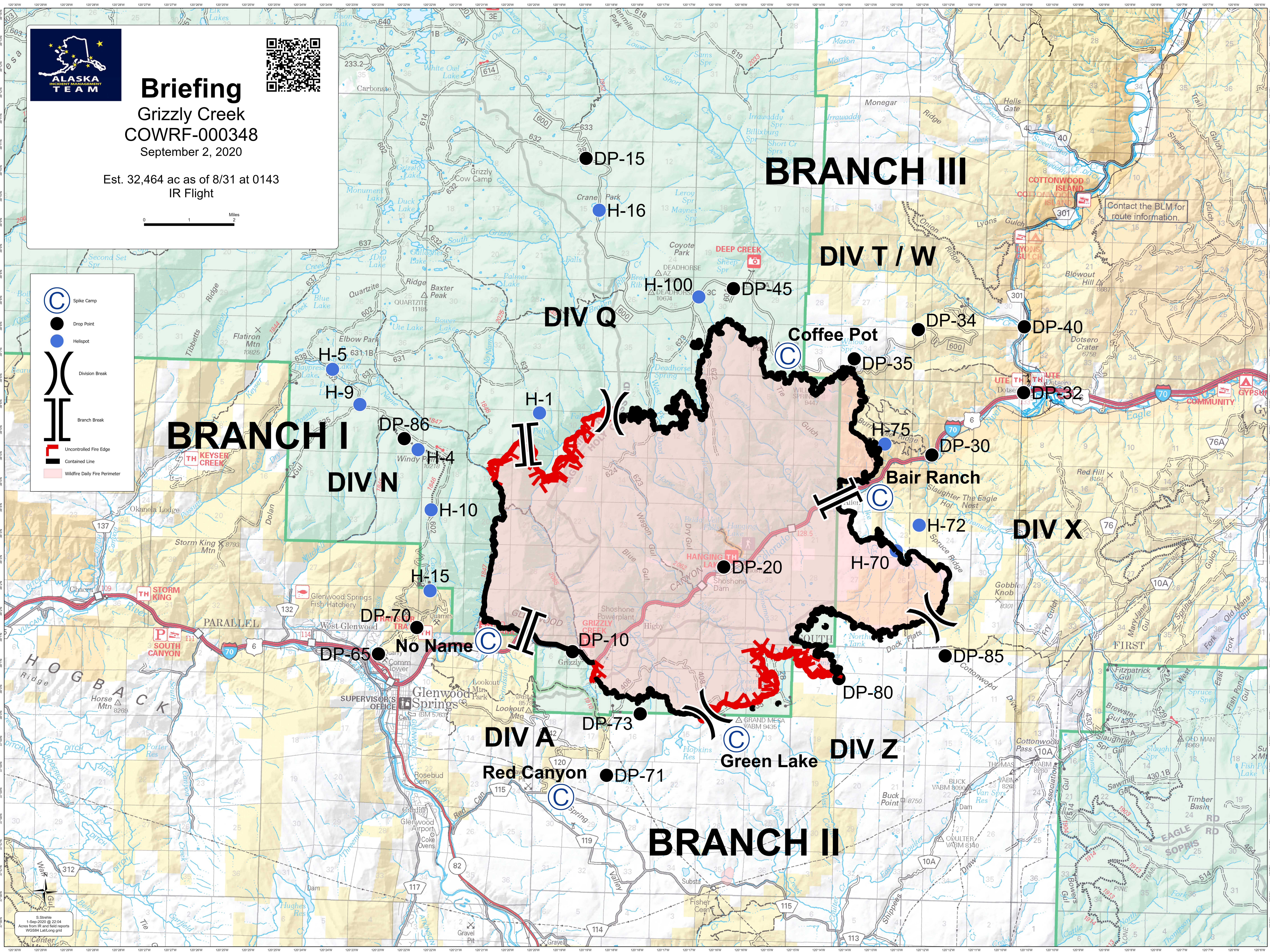
September 2, 2020



Est. 32,464 ac as of 8/31 at 0143
IR Flight



- Spike Camp
- Drop Point
- Helispot
- Division Break
- Branch Break
- Uncontrolled Fire Edge
- Contained Line
- Wildfire Daily Fire Perimeter



BRANCH III

DIV T / W

DIV Q

BRANCH I

DIV N

DIV X

DIV A

DIV Z

BRANCH II

Contact the BLM for route information.

S. Stehly
1-Sep-2020 @ 22:04
Acs from IR and field reports
WGS84 Lat/Long grid