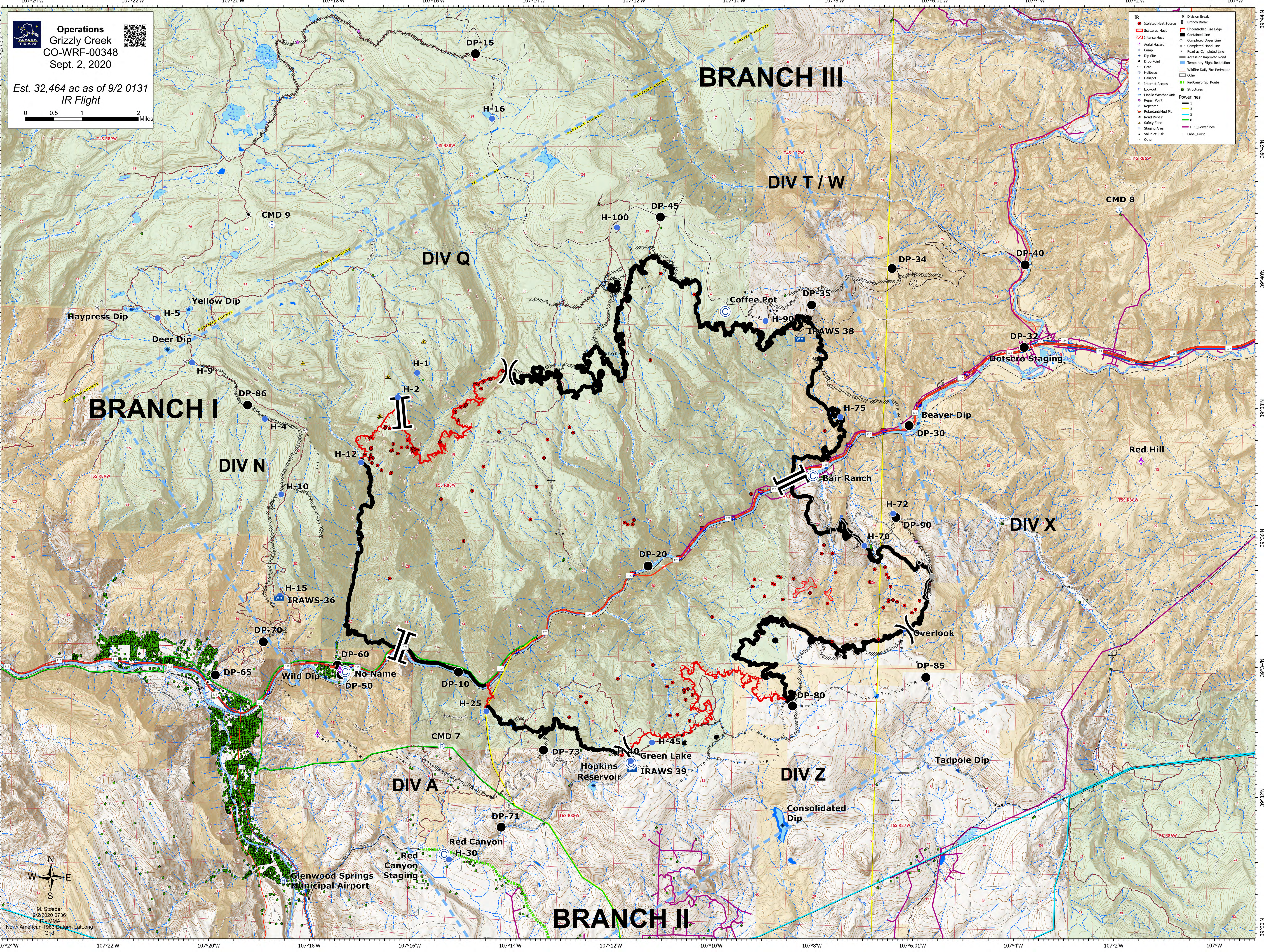


Operations
Grizzly Creek
CO-WRF-00348
 Sept. 2, 2020

Est. 32,464 ac as of 9/2 0131
 IR Flight



IR		Division Break	
●	Isolated Heat Source		Division Break
○	Scattered Heat		Branch Break
□	Intense Heat	○	Uncontrolled Fire Edge
△	Aerial Hazard	○	Controlled Fire Line
●	Camp	○	Road as Completed Line
●	Drop Point	○	Completed Hand Line
○	Gate	○	Access or Improved Road
○	Helibase	○	Temporary Flight Restriction
○	Helispot	○	Wildfire Daily Fire Perimeter
○	Internal Access	○	Other
○	Lookout	○	Red Canyon Route
○	Mobile Weather Unit	○	Structures
○	Repair Point	○	Powerlines
○	Repeater	○	1
○	Rebar/Mud Pit	○	3
○	Road Repair	○	5
○	Safety Zone	○	6
○	Staging Area	○	Other
○	Value at Risk	○	NCE Powerlines
○	Other	○	Label_Pole

M. Stober
 9/2/2020 0736
 IR - MMA
 North American 1983 Datum, Lat/Long
 Grid

BRANCH III

BRANCH I

BRANCH II

DIV Q

DIV T / W

DIV N

DIV A

DIV Z

DIV X

Yellow Dip

Coffee Pot

Bair Ranch

Wild Dip

Hopkins Reservoir

Tadpole Dip

Glenwood Springs Municipal Airport

Dotsero Staging

Red Canyon Staging

Red Hill

Beaver Dip

Overlook

Green Lake

Deer Dip

IRAWS 38

IRAWS-36

IRAWS 39

Red Canyon

Haypress Dip

IRAWS 38

DP-86

DP-45

DP-34

DP-40

H-9

H-16

H-100

H-75

DP-32

H-1

H-2

H-90

H-75

DP-30

H-4

H-12

DP-20

H-75

DP-30

H-10

H-1

H-70

H-70

DP-90

DP-70

DP-60

DP-10

DP-20

H-70

DP-90

DP-65

DP-50

H-25

DP-80

DP-80

DP-85

DP-65

DP-50

DP-71

DP-73

DP-80

DP-85

DP-65

DP-50

H-30

DP-73

DP-80

DP-85

DP-65

DP-50

H-30

DP-73

DP-80

DP-85

DP-65

DP-50

H-30

DP-73

DP-80

DP-85