



DIV_Q/T/W

Operations
Grizzly Creek
CO-WRF-00348
Sept. 5, 2020

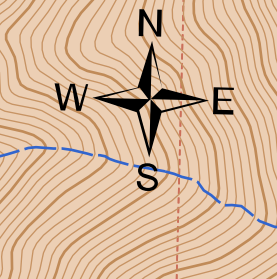
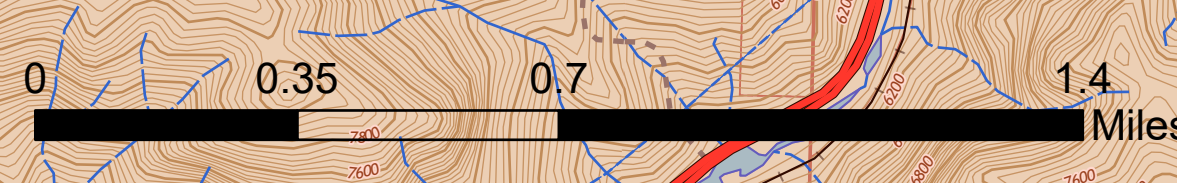
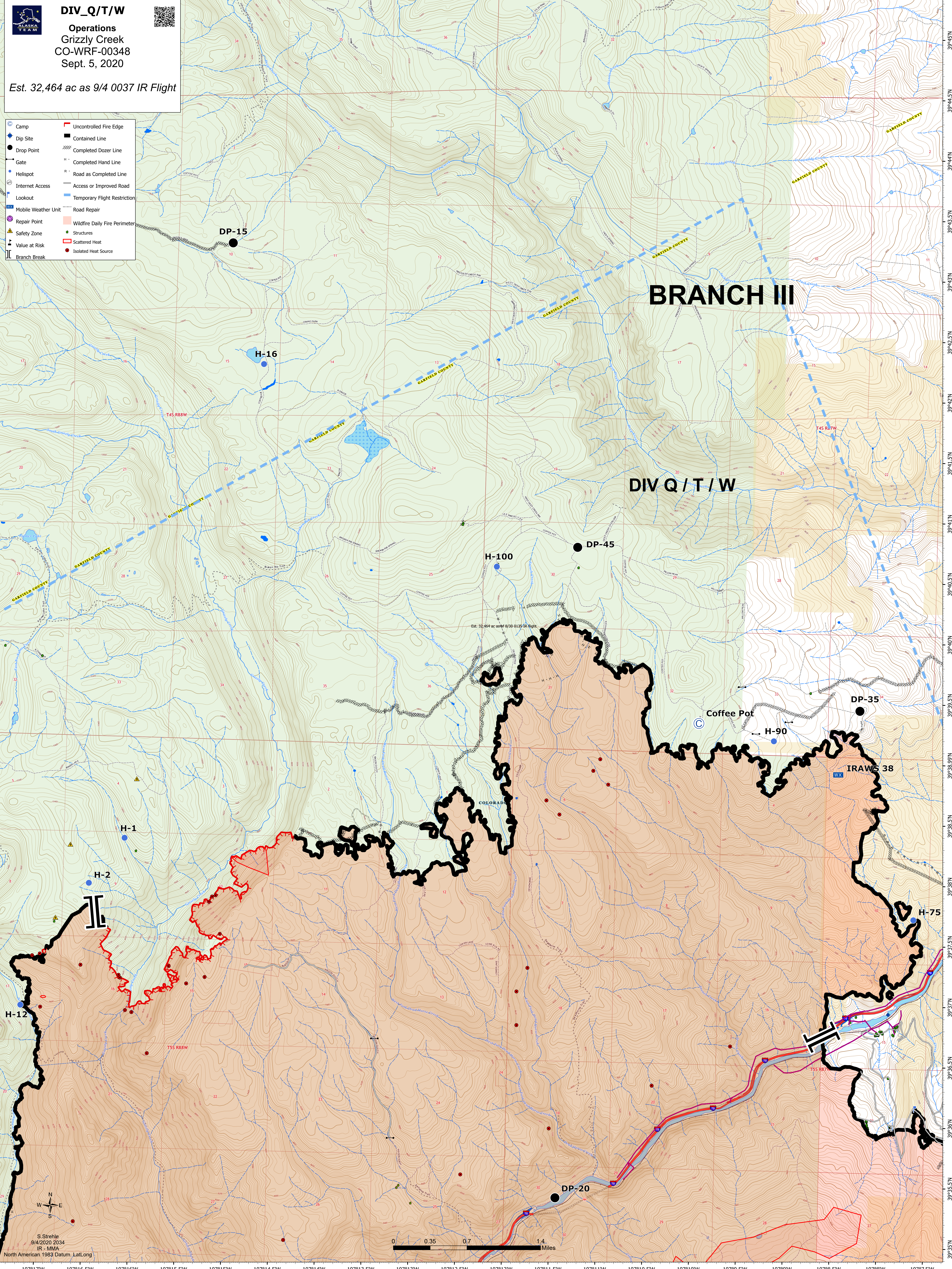


Est. 32,464 ac as 9/4 0037 IR Flight

- | | | | |
|--|---------------------|--|-------------------------------|
| | Camp | | Uncontrolled Fire Edge |
| | Dip Site | | Contained Line |
| | Drop Point | | Completed Dozer Line |
| | Gate | | Completed Hand Line |
| | Helispot | | Road as Completed Line |
| | Internet Access | | Access or Improved Road |
| | Lookout | | Temporary Flight Restriction |
| | Mobile Weather Unit | | Road Repair |
| | Repair Point | | Wildfire Daily Fire Perimeter |
| | Safety Zone | | Structures |
| | Value at Risk | | Scattered Heat |
| | Branch Break | | Isolated Heat Source |

BRANCH III

DIV Q / T / W



S. Strehle
9/4/2020 2034
IR - MMA
North American 1983 Datum: Lat/Long