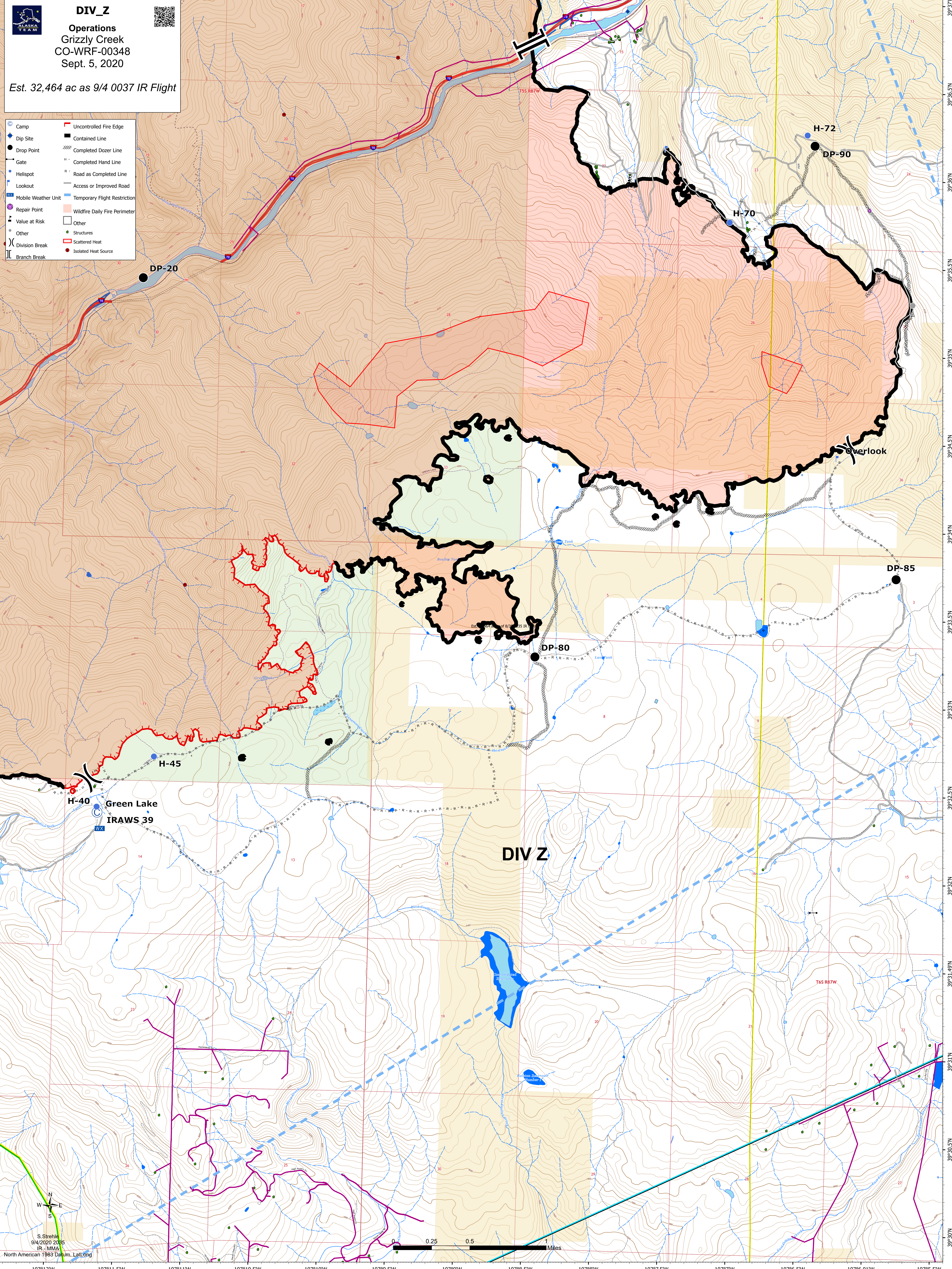


DIV_Z
Operations
Grizzly Creek
CO-WRF-00348
Sept. 5, 2020

Est. 32,464 ac as 9/4 0037 IR Flight

- | | |
|---------------------|-------------------------------|
| Camp | Uncontrolled Fire Edge |
| Dip Site | Contained Line |
| Drop Point | Completed Dozer Line |
| Gate | Completed Hand Line |
| Helispot | Road as Completed Line |
| Lookout | Access or Improved Road |
| Mobile Weather Unit | Temporary Flight Restriction |
| Repair Point | Wildfire Daily Fire Perimeter |
| Value at Risk | Other |
| Other | Structures |
| Division Break | Scattered Heat |
| Branch Break | Isolated Heat Source |



S. Strehle
 9/4/2020 2035
 IR - MMA
 North American 1983 Datum, Lat/Long

