


Operations
Grizzly Creek
CO-WRF-00348
Sept. 5, 2020

Est. 32,464 ac as of 9/4 0037 IR Flight

0 0.5 1 2 Miles



IR	Isolated Heat Source	Branch Break
Scattered Heat	Scattered Heat	Uncontrolled Fire Edge
Intense Heat	Intense Heat	Completed Dozer Line
Aerial Hazard	Aerial Hazard	Completed Hand Line
Camp	Camp	Road as Completed Line
Drop Site	Drop Site	Access or Improved Road
Gate	Gate	Temporary Flight Restriction
Helibase	Helibase	Road Repair
Helipad	Helipad	Wildfire Daily Fire Perimeter
Internal Access	Internal Access	Other
Lookout	Lookout	RedCanyon50_Route
Mobile Weather Unit	Mobile Weather Unit	Structures
Repair Point	Repair Point	Powerlines
Reservoir	Reservoir	1
Road Repair	Road Repair	2
Safety Zone	Safety Zone	3
Staging Area	Staging Area	4
Value at Risk	Value at Risk	5
Division Break	Division Break	NCE Powerlines
		Label_Pane

BRANCH III

DIV Q / T / W

BRANCH I

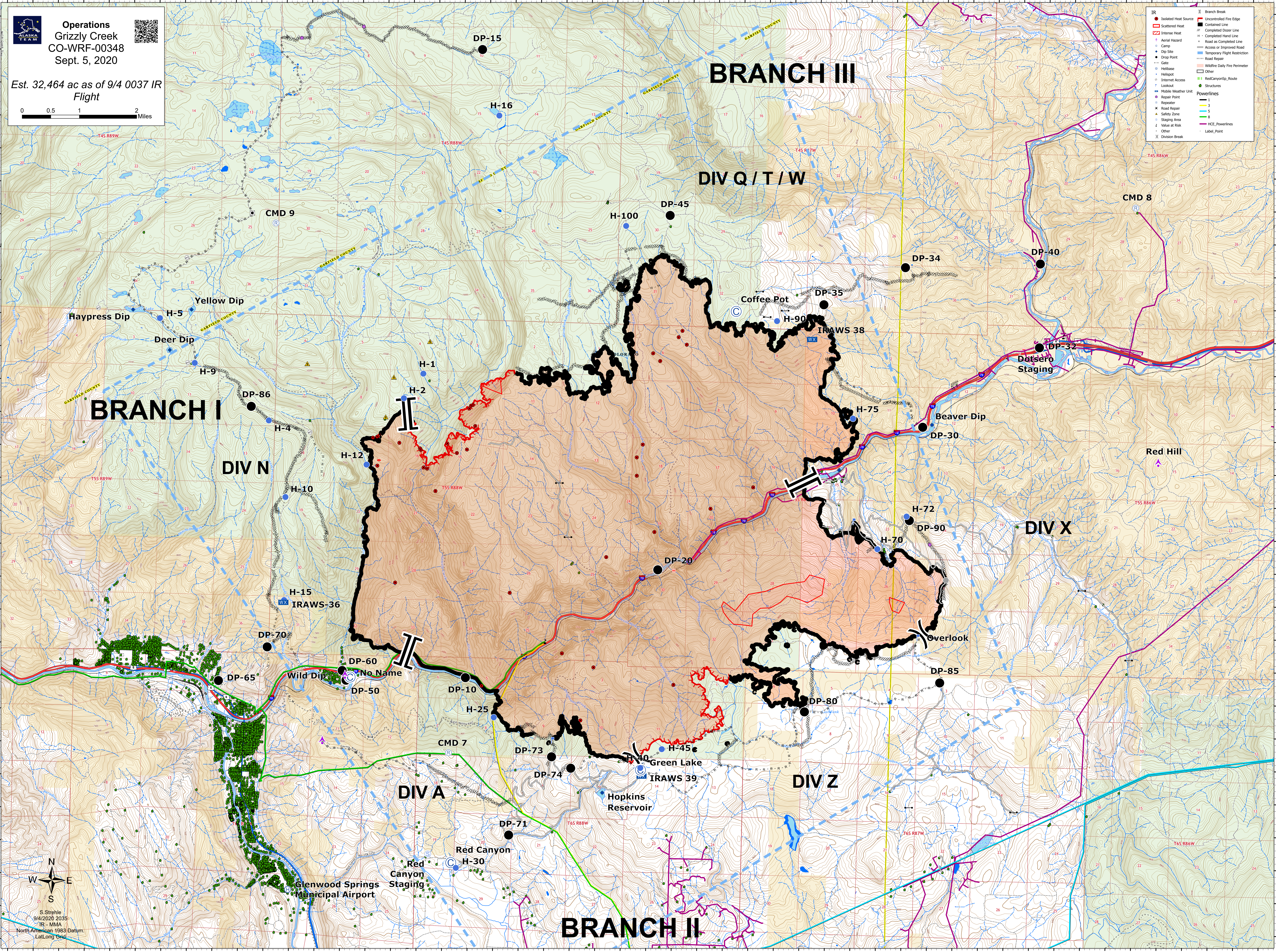
DIV N

DIV X

DIV A

DIV Z

BRANCH II



North Arrow

S. Strehle
 9/4/2020 2035
 IR - MMA
 North American 1983 Datum
 Lat/Long Grid