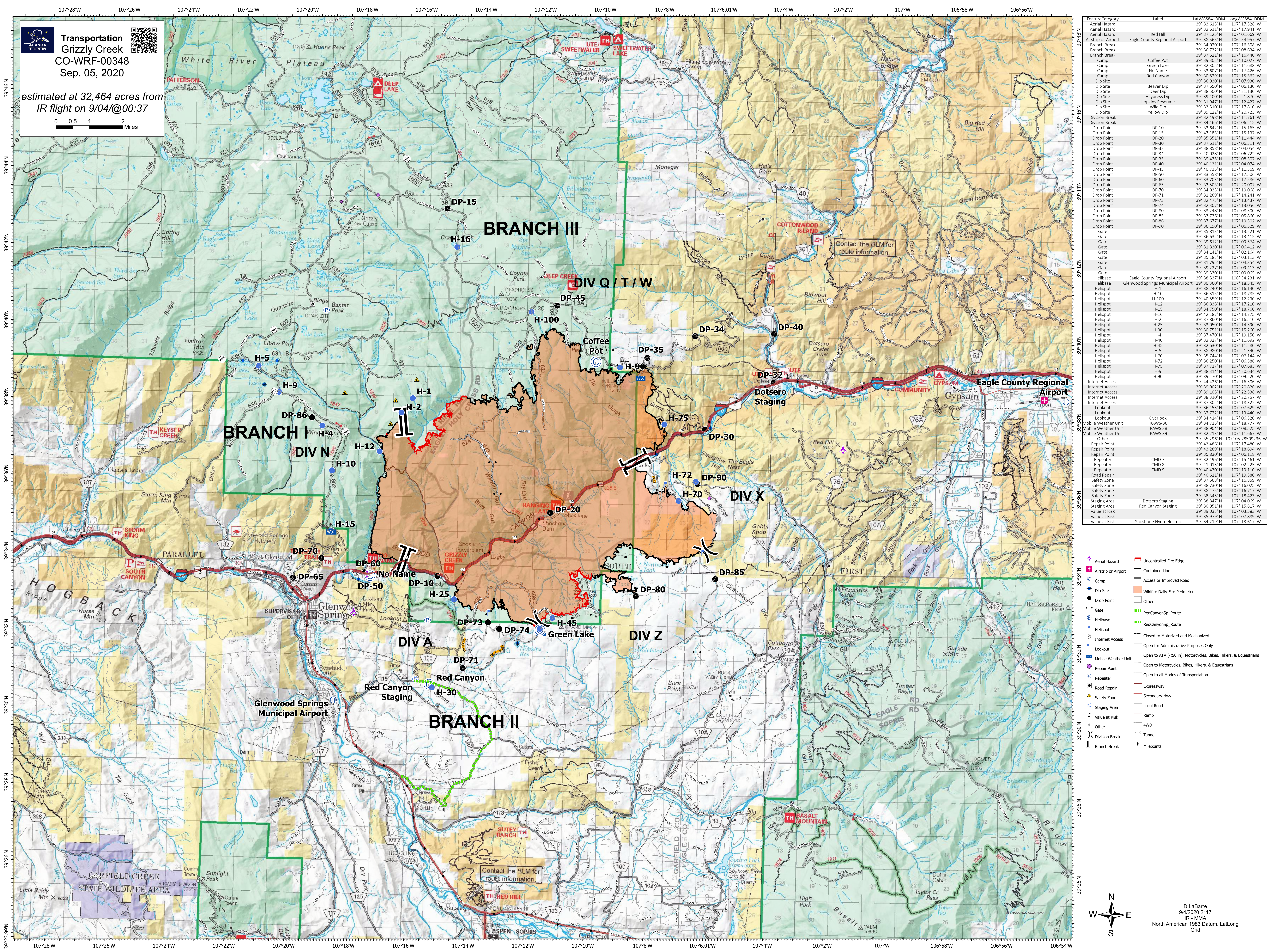


Transportation
Grizzly Creek
CO-WRF-00348
Sep. 05, 2020

estimated at 32,464 acres from
 IR flight on 9/04/@00:37



Feature/Category	Label	Lat/WGS84, DDM	Long/WGS84, DDM
Aerial Hazard	Aerial Hazard	39° 33.613' N	107° 17.528' W
Aerial Hazard	Red Hill	39° 32.611' N	107° 17.941' W
Airstrip or Airport	Eagle County Regional Airport	39° 38.565' N	106° 54.957' W
Branch Break		39° 34.020' N	107° 16.308' W
Branch Break		39° 37.732' N	107° 08.834' W
Branch Break		39° 37.621' N	107° 16.440' W
Camp	Coffee Pot	39° 39.302' N	107° 10.027' W
Camp	Green Lake	39° 32.305' N	107° 11.688' W
Camp	No Name	39° 32.607' N	107° 17.657' W
Camp	Red Canyon	39° 30.829' N	107° 15.362' W
Dip Site	Beaver Dip	39° 37.650' N	107° 06.130' W
Dip Site	Deer Dip	39° 39.100' N	107° 12.130' W
Dip Site	Haypress Dip	39° 39.100' N	107° 21.870' W
Dip Site	Hopkins Reservoir	39° 31.947' N	107° 12.427' W
Dip Site	Wild Dip	39° 32.610' N	107° 17.810' W
Dip Site	Yellow Dip	39° 39.122' N	107° 20.723' W
Division Break		39° 32.498' N	107° 11.761' W
Division Break		39° 34.466' N	107° 06.215' W
Drop Point	DP-10	39° 31.662' N	107° 15.165' W
Drop Point	DP-15	39° 43.183' N	107° 15.137' W
Drop Point	DP-20	39° 35.351' N	107° 11.444' W
Drop Point	DP-30	39° 37.611' N	107° 06.311' W
Drop Point	DP-32	39° 35.502' N	107° 04.654' W
Drop Point	DP-34	39° 40.028' N	107° 06.722' W
Drop Point	DP-35	39° 39.435' N	107° 08.307' W
Drop Point	DP-40	39° 40.131' N	107° 18.785' W
Drop Point	DP-45	39° 40.735' N	107° 11.669' W
Drop Point	DP-50	39° 33.558' N	107° 17.506' W
Drop Point	DP-60	39° 33.703' N	107° 17.586' W
Drop Point	DP-65	39° 33.510' N	107° 15.610' W
Drop Point	DP-70	39° 34.033' N	107° 19.068' W
Drop Point	DP-71	39° 31.269' N	107° 14.241' W
Drop Point	DP-73	39° 32.473' N	107° 13.437' W
Drop Point	DP-74	39° 31.795' N	107° 13.056' W
Drop Point	DP-80	39° 33.248' N	107° 08.500' W
Drop Point	DP-85	39° 33.736' N	107° 05.860' W
Drop Point	DP-86	39° 33.677' N	107° 19.600' W
Drop Point	DP-88	39° 36.190' N	107° 06.529' W
Drop Point	DP-90	39° 35.813' N	107° 13.221' W
Gate		39° 36.632' N	107° 13.415' W
Gate		39° 31.795' N	107° 15.165' W
Gate		39° 31.830' N	107° 06.412' W
Gate		39° 34.141' N	107° 02.164' W
Gate		39° 35.183' N	107° 03.113' W
Gate		39° 31.795' N	107° 15.165' W
Gate		39° 39.227' N	107° 09.413' W
Gate		39° 39.330' N	107° 09.065' W
Helibase	Eagle County Regional Airport	39° 38.537' N	106° 54.231' W
Helibase	Glenwood Springs Municipal Airport	39° 38.537' N	106° 54.231' W
Helispot	H-1	39° 38.240' N	107° 16.140' W
Helispot	H-10	39° 36.315' N	107° 18.785' W
Helispot	H-100	39° 40.131' N	107° 12.427' W
Helispot	H-12	39° 36.838' N	107° 17.210' W
Helispot	H-15	39° 34.750' N	107° 18.760' W
Helispot	H-16	39° 42.187' N	107° 14.775' W
Helispot	H-2	39° 31.800' N	107° 16.107' W
Helispot	H-25	39° 33.050' N	107° 14.590' W
Helispot	H-30	39° 30.751' N	107° 15.260' W
Helispot	H-34	39° 37.470' N	107° 19.150' W
Helispot	H-40	39° 37.470' N	107° 19.150' W
Helispot	H-45	39° 32.630' N	107° 11.280' W
Helispot	H-5	39° 38.980' N	107° 21.340' W
Helispot	H-70	39° 35.744' N	107° 07.144' W
Helispot	H-72	39° 32.213' N	107° 11.692' W
Helispot	H-75	39° 37.177' N	107° 07.683' W
Helispot	H-9	39° 38.314' N	107° 20.634' W
Helispot	H-90	39° 35.170' N	107° 09.220' W
Internet Access		39° 44.210' N	107° 16.506' W
Internet Access		39° 39.902' N	107° 20.826' W
Internet Access		39° 39.105' N	107° 22.538' W
Internet Access		39° 38.310' N	107° 20.757' W
Internet Access		39° 37.302' N	107° 18.322' W
Lookout		39° 36.153' N	107° 07.629' W
Lookout		39° 32.722' N	107° 13.440' W
Lookout		39° 34.414' N	107° 06.320' W
Mobile Weather Unit	Overlook	39° 34.715' N	107° 18.777' W
Mobile Weather Unit	IRAWS-36	39° 38.904' N	107° 08.255' W
Mobile Weather Unit	IRAWS-38	39° 32.213' N	107° 11.692' W
Mobile Weather Unit	IRAWS-39	39° 36.250' N	107° 06.529' W
Other		39° 35.296' N	107° 05.78509236' W
Repair Point		39° 43.486' N	107° 17.480' W
Repair Point		39° 43.289' N	107° 18.694' W
Repair Point		39° 35.830' N	107° 06.118' W
Repeater	CMD 7	39° 32.496' N	107° 15.461' W
Repeater	CMD 8	39° 41.013' N	107° 02.225' W
Repeater	CMD 9	39° 40.470' N	107° 19.110' W
Road Repair		39° 40.611' N	107° 19.580' W
Safety Zone		39° 37.568' N	107° 16.859' W
Safety Zone		39° 38.730' N	107° 16.025' W
Safety Zone		39° 38.175' N	107° 16.717' W
Safety Zone		39° 38.345' N	107° 18.423' W
Staging Area	Dotsero Staging	39° 38.847' N	107° 04.069' W
Staging Area	Red Canyon Staging	39° 30.951' N	107° 15.817' W
Value at Risk		39° 39.033' N	107° 03.583' W
Value at Risk		39° 35.979' N	107° 07.889' W
Value at Risk	Shoshone Hydroelectric	39° 34.219' N	107° 13.617' W

- Aerial Hazard
- Airstrip or Airport
- Camp
- Dip Site
- Drop Point
- Gate
- Helibase
- Helispot
- Internet Access
- Lookout
- Mobile Weather Unit
- Repair Point
- Repeater
- Road Repair
- Safety Zone
- Staging Area
- Value at Risk
- Other
- Division Break
- Branch Break
- Uncontrolled Fire Edge
- Contained Line
- Access or Improved Road
- Wildfire Daily Fire Perimeter
- Other
- RedCanyonSp_Route
- RedCanyonSp_Route
- Closed to Motorized and Mechanized
- Open for Administrative Purposes Only
- Open to ATV (<50 in), Motorcycles, Bikes, Hikers, & Equestrians
- Open to Motorcycles, Bikes, Hikers, & Equestrians
- Open to all Modes of Transportation
- Expressway
- Secondary Hwy
- Local Road
- Ramp
- 4WD
- Tunnel
- Milepoints

D.LaBarre
 9/4/2020 2117
 IR - MMA
 North American 1983 Datum, Lat/Long
 Grid