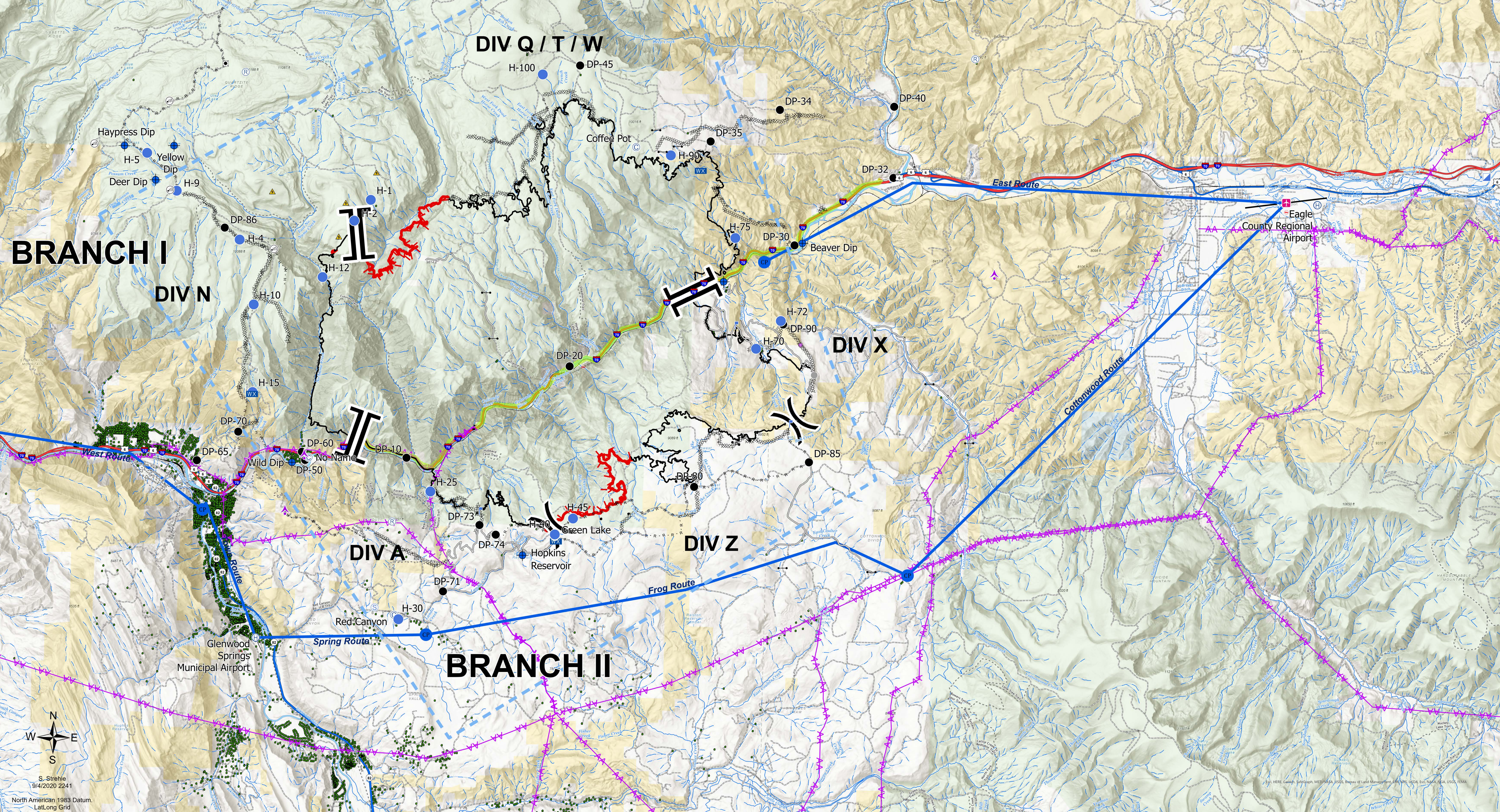


Air Operations
Grizzly Creek
CO-WRF-000348
09/05/2020

Est. 32,464 acres as of
 09/04 0037 IR Flight

- | | |
|-------------------------|--------------------------------|
| ◆ Aerial Hazard | ✕ Other |
| ◆ Airstrip or Airport | ✕ Division Break |
| ● Dip Site | Branch Break |
| ● Drop Point | — Uncontrolled Fire Edge |
| ○ Gate | — Contained Line |
| ○ Helibase | — Completed Dozer Line |
| ○ Helispot | — Completed Hand Line |
| ○ Incident Command Post | — Road as Completed Line |
| ○ Internet Access | — Access or Improved Road |
| ○ Lookout | — Temporary Flight Restriction |
| ○ Mobile Weather Unit | — Road Repair |
| ○ Repair Point | ● Structures |
| ○ Repeater | — Flight Routes |
| ○ Road Repair | ● Check Points |
| ○ Safety Zone | — Transmission Lines |
| ○ Staging Area | ● Powerline Work Sites |
| ○ Value at Risk | |



North Arrow

S. Strehle
 9/4/2020 2241

North American 1983 Datum,
 LatLong Grid

© 2020 HERE Global, San Diego, CA, USA. All rights reserved. HERE, HERE Global, San Diego, CA, USA. All rights reserved. HERE, HERE Global, San Diego, CA, USA. All rights reserved.