

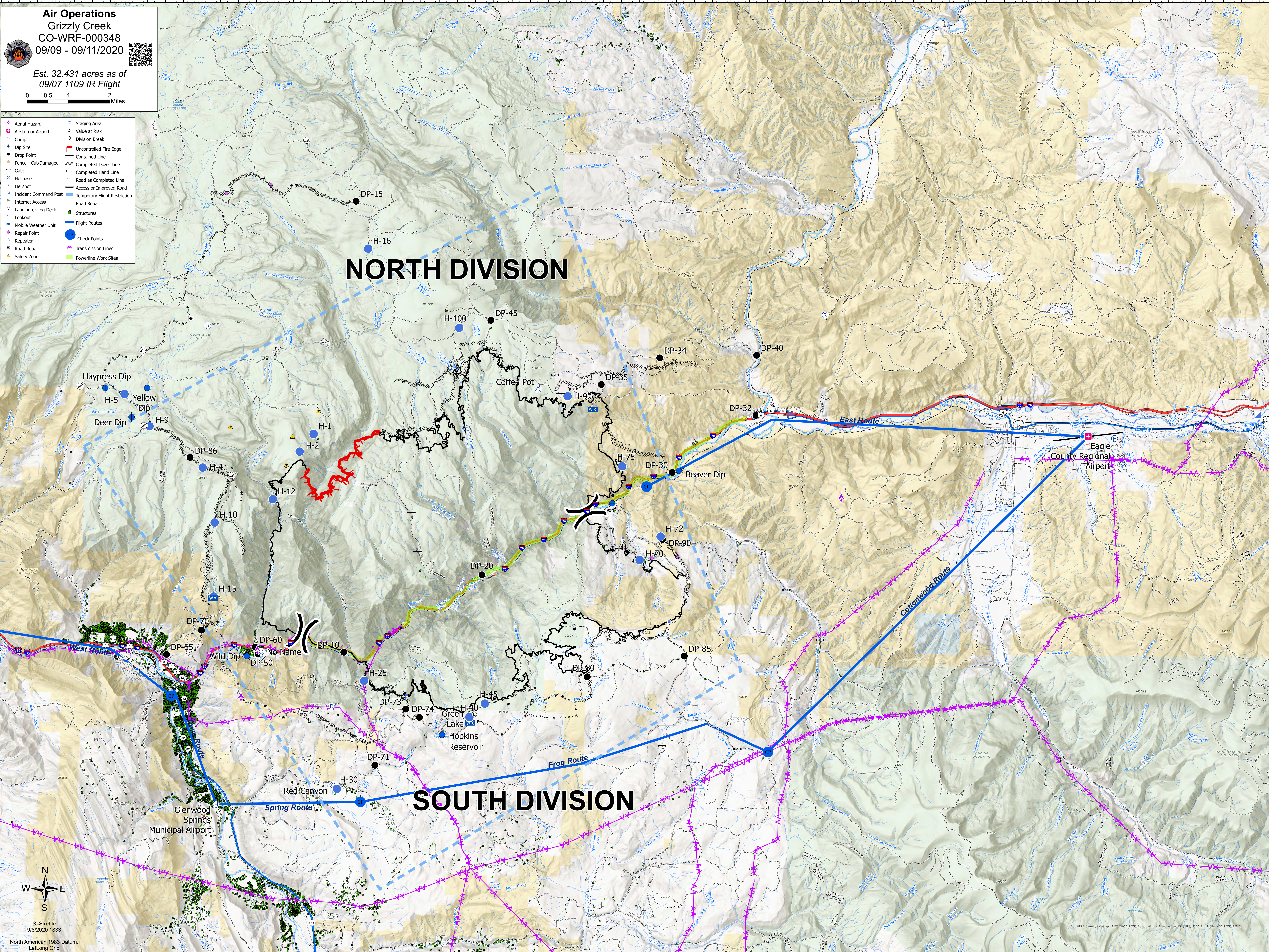
Air Operations
Grizzly Creek
CO-WRF-000348
09/09 - 09/11/2020

Est. 32,431 acres as of
 09/07 1109 IR Flight

- Aerial Hazard
- Airstrip or Airport
- Dip Site
- Camp
- Drop Point
- Fence - Cut/Damaged
- Gate
- Helibase
- Helispot
- Incident Command Post
- Internet Access
- Landing or Log Deck
- Lookout
- Mobile Weather Unit
- Repair Point
- Repeater
- Road Repair
- Safety Zone
- Staging Area
- Value at Risk
- Division Break
- Uncontrolled Fire Edge
- Contained Line
- Completed Dozer Line
- Completed Hand Line
- Road as Completed Line
- Access or Improved Road
- Temporary Flight Restriction
- Road Repair
- Structures
- Flight Routes
- Check Points
- Transmission Lines
- Powerline Work Sites

NORTH DIVISION

SOUTH DIVISION



S. Strehle
 9/8/2020 1833
 North American 1983 Datum.
 LatLong Grid