

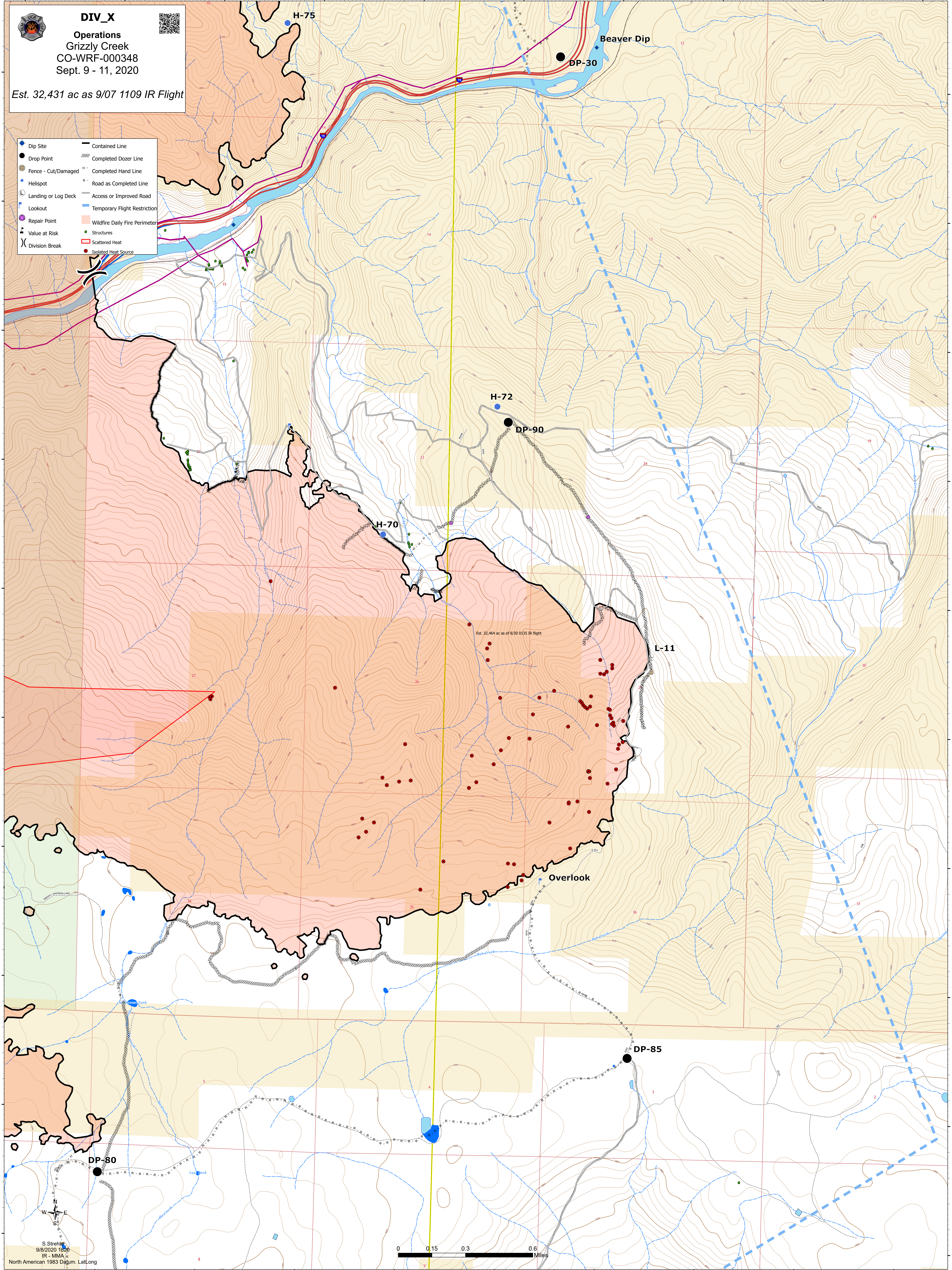


DIV_X
Operations
 Grizzly Creek
 CO-WRF-000348
 Sept. 9 - 11, 2020



Est. 32,431 ac as 9/07 1109 IR Flight

- | | |
|-----------------------|---------------------------------|
| ● Dip Site | — Contained Line |
| ● Drop Point | XXXX Completed Dozer Line |
| ● Fence - Cut/Damaged | --- Completed Hand Line |
| ● Helispot | — Road as Completed Line |
| Ⓛ Landing or Log Deck | — Access or Improved Road |
| Ⓛ Lookout | — Temporary Flight Restriction |
| ● Repair Point | — Wildfire Daily Fire Perimeter |
| ● Value at Risk | ● Structures |
| Ⓜ Division Break | ■ Scattered Heat |
| | ● Isolated Heat Source |



S. Strehle
 9/8/2020 12:22
 IR - MMA
 North American 1983 Datum, Lat/Long