

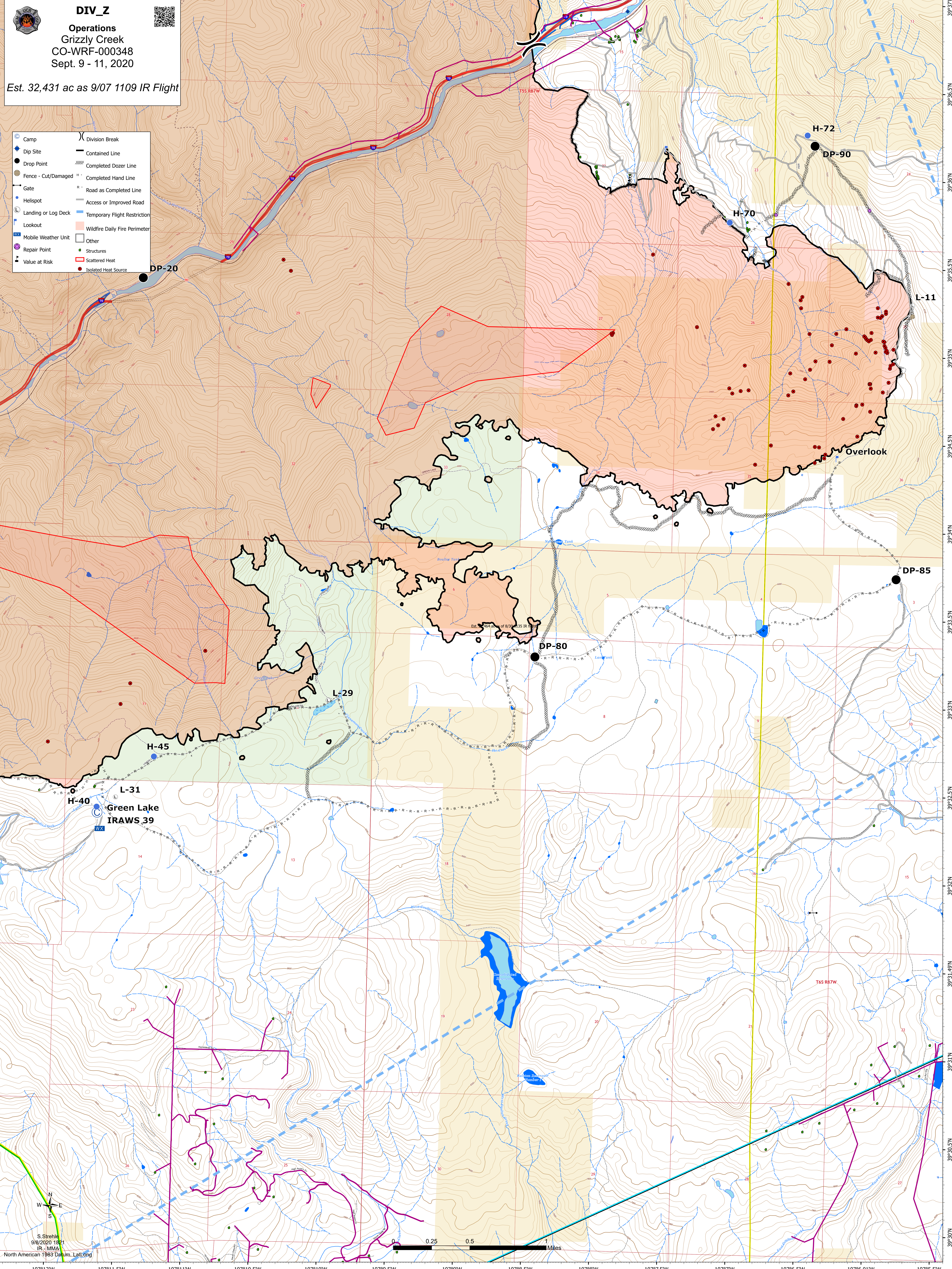


**DIV\_Z**  
**Operations**  
**Grizzly Creek**  
**CO-WRF-000348**  
**Sept. 9 - 11, 2020**



Est. 32,431 ac as 9/07 1109 IR Flight

- |  |                     |  |                               |
|--|---------------------|--|-------------------------------|
|  | Camp                |  | Division Break                |
|  | Dip Site            |  | Contained Line                |
|  | Drop Point          |  | Completed Dozer Line          |
|  | Fence - Cut/Damaged |  | Completed Hand Line           |
|  | Gate                |  | Road as Completed Line        |
|  | Helispot            |  | Access or Improved Road       |
|  | Landing or Log Deck |  | Temporary Flight Restriction  |
|  | Lookout             |  | Wildfire Daily Fire Perimeter |
|  | Mobile Weather Unit |  | Other                         |
|  | Repair Point        |  | Structures                    |
|  | Value at Risk       |  | Scattered Heat                |
|  |                     |  | Isolated Heat Source          |



S. Strehle  
 9/8/2020 12:21  
 IR - MMA  
 North American 1983 Datum, Lat/Long