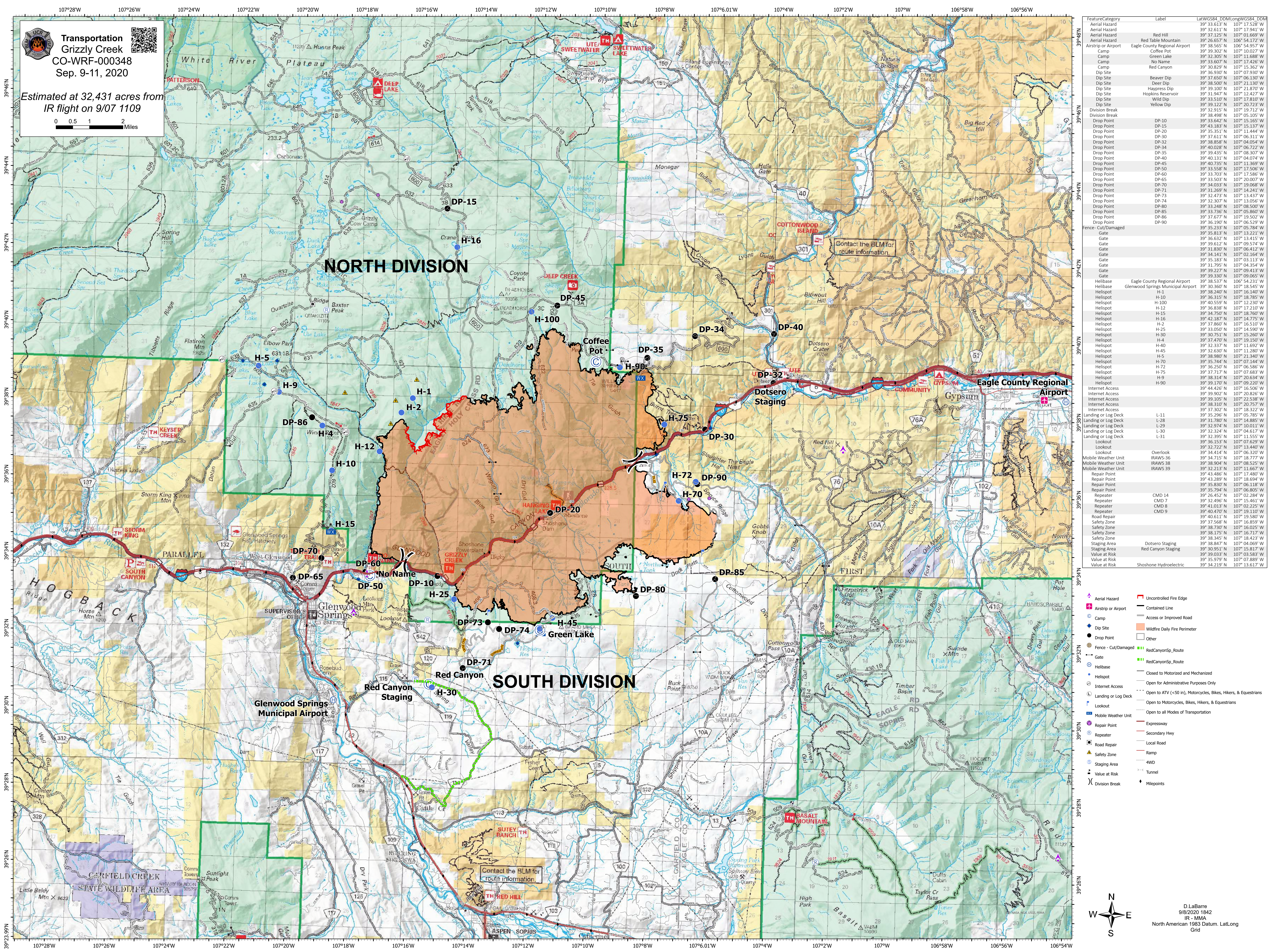


**Transportation**  
**Grizzly Creek**  
 CO-WRF-000348  
 Sep. 9-11, 2020

Estimated at 32,431 acres from  
 IR flight on 9/07 1109



FeatureCategory	Label	LatWGS84	DMLongWGS84	DDM
Aerial Hazard	Aerial Hazard	39° 33.613' N	107° 17.528' W	
Aerial Hazard	Red Hill	39° 32.611' N	107° 17.941' W	
Aerial Hazard	Red Table Mountain	39° 26.657' N	106° 54.172' W	
Airstrip or Airport	Eagle County Regional Airport	39° 38.565' N	106° 54.957' W	
Camp	Coffee Pot	39° 39.302' N	107° 10.027' W	
Camp	Green Lake	39° 32.305' N	107° 11.688' W	
Camp	No Name	39° 33.607' N	107° 17.426' W	
Camp	Red Canyon	39° 30.829' N	107° 15.362' W	
Dip Site	Beaver Dip	39° 36.930' N	107° 07.930' W	
Dip Site	Deer Dip	39° 37.430' N	107° 06.300' W	
Dip Site	Happys Dip	39° 39.100' N	107° 21.870' W	
Dip Site	Hopkins Reservoir	39° 31.947' N	107° 12.427' W	
Dip Site	Wild Dip	39° 32.033' N	107° 17.810' W	
Dip Site	Yellow Dip	39° 39.122' N	107° 20.723' W	
Division Break		39° 32.915' N	107° 19.712' W	
Division Break		39° 38.498' N	107° 05.105' W	
Drop Point	DP-10	39° 37.611' N	107° 06.311' W	
Drop Point	DP-15	39° 35.351' N	107° 11.444' W	
Drop Point	DP-20	39° 37.611' N	107° 06.311' W	
Drop Point	DP-30	39° 37.611' N	107° 06.311' W	
Drop Point	DP-32	39° 38.858' N	107° 04.688' W	
Drop Point	DP-34	39° 40.028' N	107° 06.722' W	
Drop Point	DP-35	39° 39.435' N	107° 08.307' W	
Drop Point	DP-40	39° 40.131' N	107° 04.074' W	
Drop Point	DP-45	39° 37.733' N	107° 16.369' W	
Drop Point	DP-50	39° 33.558' N	107° 17.506' W	
Drop Point	DP-60	39° 33.703' N	107° 17.586' W	
Drop Point	DP-65	39° 33.503' N	107° 20.007' W	
Drop Point	DP-70	39° 34.033' N	107° 17.810' W	
Drop Point	DP-71	39° 31.269' N	107° 14.241' W	
Drop Point	DP-73	39° 32.473' N	107° 13.437' W	
Drop Point	DP-74	39° 32.307' N	107° 13.056' W	
Drop Point	DP-80	39° 33.242' N	107° 08.500' W	
Drop Point	DP-85	39° 33.736' N	107° 05.860' W	
Drop Point	DP-86	39° 37.677' N	107° 19.502' W	
Drop Point	DP-90	39° 36.190' N	107° 06.529' W	
Fence - Cut/Damaged		39° 35.233' N	107° 05.784' W	
Gate		39° 35.813' N	107° 13.221' W	
Gate		39° 36.632' N	107° 13.415' W	
Gate		39° 39.612' N	107° 09.574' W	
Gate		39° 32.830' N	107° 06.413' W	
Gate		39° 34.141' N	107° 02.164' W	
Gate		39° 35.183' N	107° 03.113' W	
Gate		39° 31.795' N	107° 04.354' W	
Gate		39° 39.227' N	107° 09.413' W	
Gate		39° 39.330' N	107° 09.065' W	
Helibase	Eagle County Regional Airport	39° 38.537' N	106° 54.231' W	
Helibase	Glenwood Springs Municipal Airport	39° 30.360' N	107° 18.545' W	
Helispot		39° 38.240' N	107° 16.340' W	
Helispot	H-10	39° 36.315' N	107° 18.785' W	
Helispot	H-100	39° 40.559' N	107° 12.230' W	
Helispot	H-12	39° 36.838' N	107° 17.210' W	
Helispot	H-15	39° 34.750' N	107° 18.760' W	
Helispot	H-16	39° 42.187' N	107° 14.775' W	
Helispot	H-2	39° 37.860' N	107° 16.510' W	
Helispot	H-25	39° 33.050' N	107° 14.590' W	
Helispot	H-30	39° 30.751' N	107° 15.260' W	
Helispot	H-35	39° 42.187' N	107° 14.775' W	
Helispot	H-40	39° 32.337' N	107° 11.692' W	
Helispot	H-45	39° 32.630' N	107° 11.280' W	
Helispot	H-5	39° 38.980' N	107° 21.340' W	
Helispot	H-70	39° 35.744' N	107° 07.144' W	
Helispot	H-72	39° 36.250' N	107° 06.586' W	
Helispot	H-75	39° 37.717' N	107° 07.683' W	
Helispot	H-9	39° 38.314' N	107° 20.634' W	
Helispot	H-90	39° 39.170' N	107° 09.220' W	
Internet Access		39° 44.426' N	107° 16.506' W	
Internet Access		39° 39.902' N	107° 20.826' W	
Internet Access		39° 39.105' N	107° 22.538' W	
Internet Access		39° 38.310' N	107° 20.757' W	
Internet Access		39° 37.302' N	107° 18.322' W	
Landing or Log Deck	L-11	39° 35.296' N	107° 05.785' W	
Landing or Log Deck	L-28	39° 31.780' N	107° 14.885' W	
Landing or Log Deck	L-29	39° 32.740' N	107° 10.011' W	
Landing or Log Deck	L-30	39° 32.324' N	107° 04.617' W	
Landing or Log Deck	L-31	39° 32.395' N	107° 11.555' W	
Lookout		39° 36.153' N	107° 07.629' W	
Lookout		39° 32.722' N	107° 13.440' W	
Lookout	Overlook	39° 34.414' N	107° 06.320' W	
Mobile Weather Unit	IRAWS-36	39° 34.715' N	107° 18.777' W	
Mobile Weather Unit	IRAWS-38	39° 38.904' N	107° 08.525' W	
Mobile Weather Unit	IRAWS-39	39° 32.213' N	107° 19.110' W	
Repair Point		39° 43.486' N	107° 17.480' W	
Repair Point		39° 43.289' N	107° 18.694' W	
Repair Point		39° 35.830' N	107° 06.118' W	
Repair Point		39° 35.294' N	107° 06.805' W	
Repeater	CMD 14	39° 26.452' N	107° 02.284' W	
Repeater	CMD 7	39° 32.496' N	107° 15.461' W	
Repeater	CMD 8	39° 41.013' N	107° 02.225' W	
Repeater	CMD 9	39° 40.470' N	107° 19.110' W	
Road Repair		39° 40.611' N	107° 19.580' W	
Safety Zone		39° 37.568' N	107° 16.859' W	
Safety Zone		39° 38.730' N	107° 16.025' W	
Safety Zone		39° 38.175' N	107° 16.717' W	
Safety Zone		39° 38.345' N	107° 18.423' W	
Staging Area	Dotsero Staging	39° 38.847' N	107° 04.069' W	
Staging Area	Red Canyon Staging	39° 30.951' N	107° 15.817' W	
Value at Risk		39° 39.033' N	107° 03.583' W	
Value at Risk		39° 35.979' N	107° 07.889' W	
Value at Risk	Shoshone Hydroelectric	39° 34.219' N	107° 13.617' W	

	Aerial Hazard		Uncontrolled Fire Edge
	Airstrip or Airport		Contained Line
	Camp		Access or Improved Road
	Dip Site		Wildfire Daily Fire Perimeter
	Drop Point		Other
	Fence - Cut/Damaged		RedCanyonSp Route
	Gate		RedCanyonSp Route
	Helibase		Closed to Motorized and Mechanized
	Helispot		Open for Administrative Purposes Only
	Internet Access		Open to ATV (<50 in), Motorcycles, Bikes, Hikers, & Equestrians
	Landing or Log Deck		Open to Motorcycles, Bikes, Hikers, & Equestrians
	Lookout		Open to all Modes of Transportation
	Mobile Weather Unit		Expressway
	Repair Point		Secondary Hwy
	Repeater		Local Road
	Road Repair		RAMP
	Safety Zone		4WD
	Staging Area		Tunnel
	Value at Risk		Mileposts
	Division Break		

North Arrow

D.LaBarre  
 9/8/2020 1842  
 IR - MMA  
 North American 1983 Datum. LatLong  
 Grid