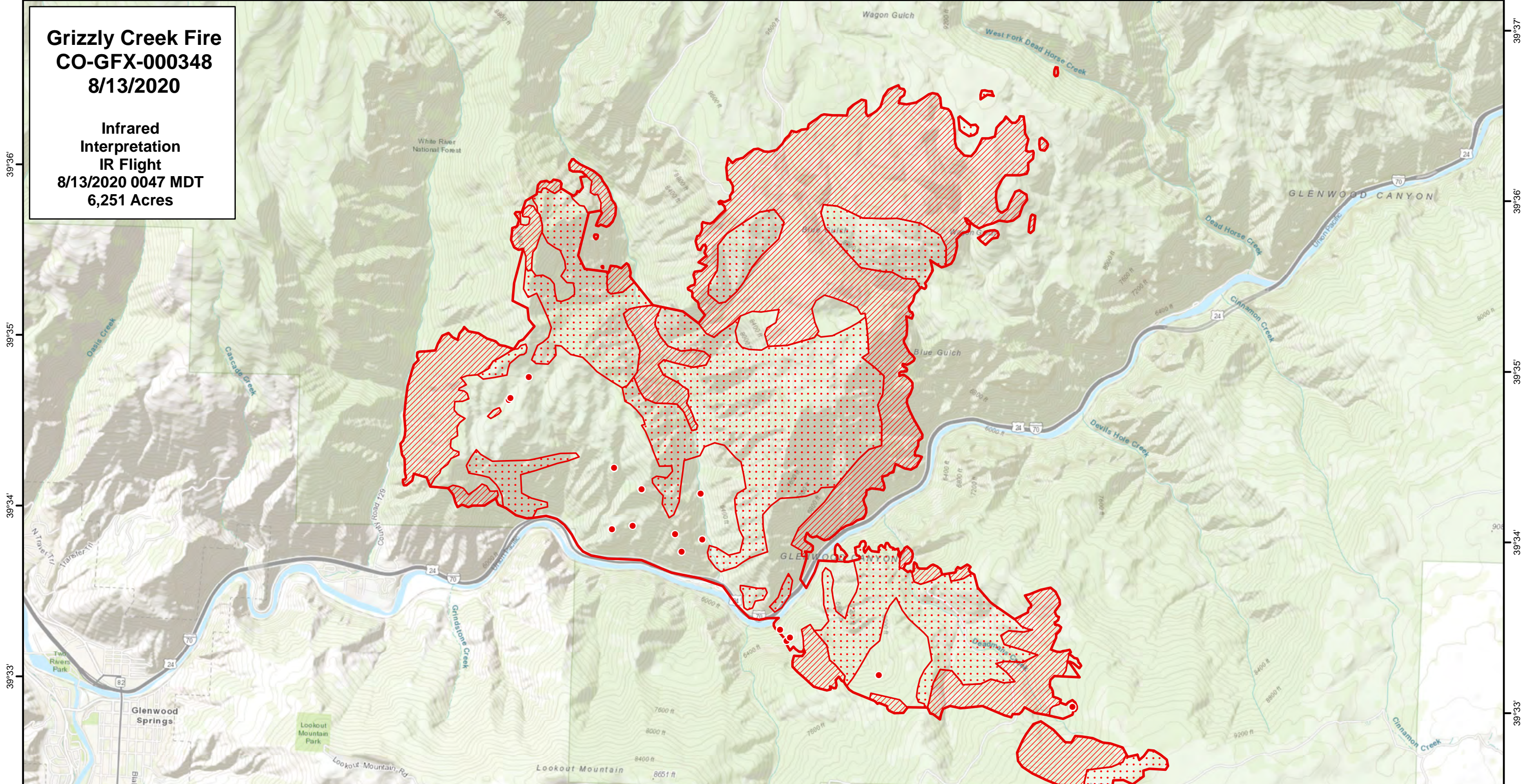


-107°20' -107°19' -107°18' -107°17' -107°16' -107°15' -107°14' -107°13' -107°12' -107°11' -107°10'

Grizzly Creek Fire CO-GFX-000348 8/13/2020

Infrared
Interpretation
IR Flight
8/13/2020 0047 MDT
6,251 Acres




- 20200813_0047_Grizzly_Creek_IsolatedHeat
- 20200813_0047_Grizzly_Creek_HeatPerimeter
- ▨ 20200813_0047_Grizzly_Creek_IntenseHeat
- 20200813_0047_Grizzly_Creek_ScatteredHeat

UTM Zone 13 WGS84

0 0.5 1
Miles

8/13/2020 2:17:50 AM PDT
Grizzly Creek Products.mxd

N



Mark Grupe, IRIN
mark_grupe@nps.gov

-107°20' -107°19' -107°18' -107°17' -107°16' -107°15' -107°14' -107°13' -107°12' -107°11' -107°10' -107°9'

39°36'
39°35'
39°34'
39°33'
39°32'

39°37'
39°36'
39°35'
39°34'
39°33'
39°32'