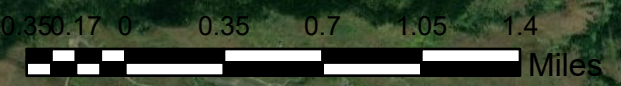
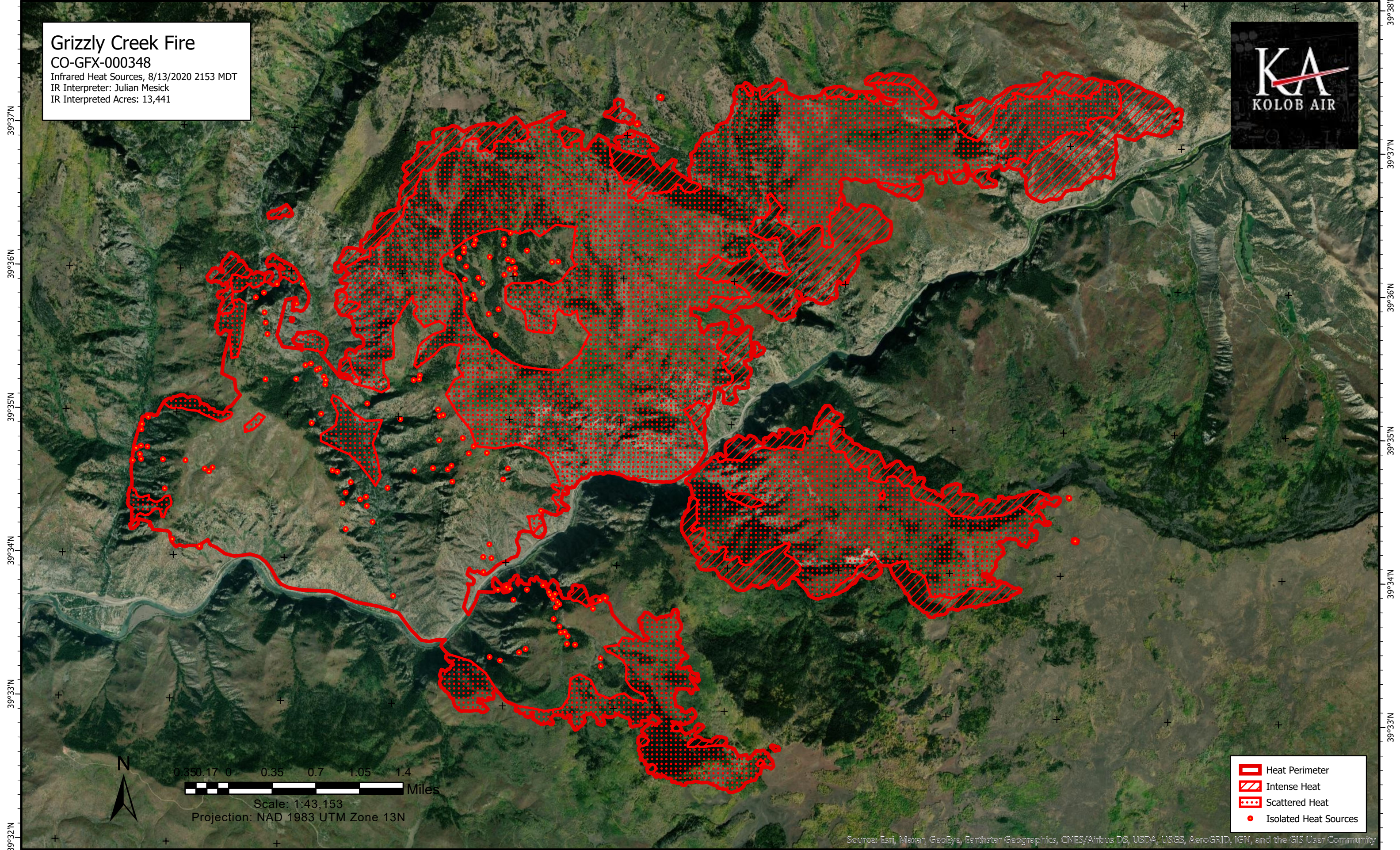


107°18'W 107°17'W 107°16'W 107°15'W 107°14'W 107°13'W 107°12'W 107°11'W 107°10'W 107°9'W 107°8'W 107°7'W

Grizzly Creek Fire
CO-GFX-000348
Infrared Heat Sources, 8/13/2020 2153 MDT
IR Interpreter: Julian Mesick
IR Interpreted Acres: 13,441



Scale: 1:43,153
Projection: NAD 1983 UTM Zone 13N

- Heat Perimeter
- Intense Heat
- Scattered Heat
- Isolated Heat Sources

Sources: Esri, Maxar, GeoEye, Earthstar Geographics, CNES/Airbus DS, USDA, USGS, AeroGRID, IGN, and the GIS User Community

107°18'W 107°17'W 107°16'W 107°15'W 107°14'W 107°13'W 107°12'W 107°11'W 107°10'W 107°9'W 107°8'W 107°7'W

39°32'N 39°33'N 39°34'N 39°35'N 39°36'N 39°37'N 39°38'N

39°32'N 39°33'N 39°34'N 39°35'N 39°36'N 39°37'N 39°38'N