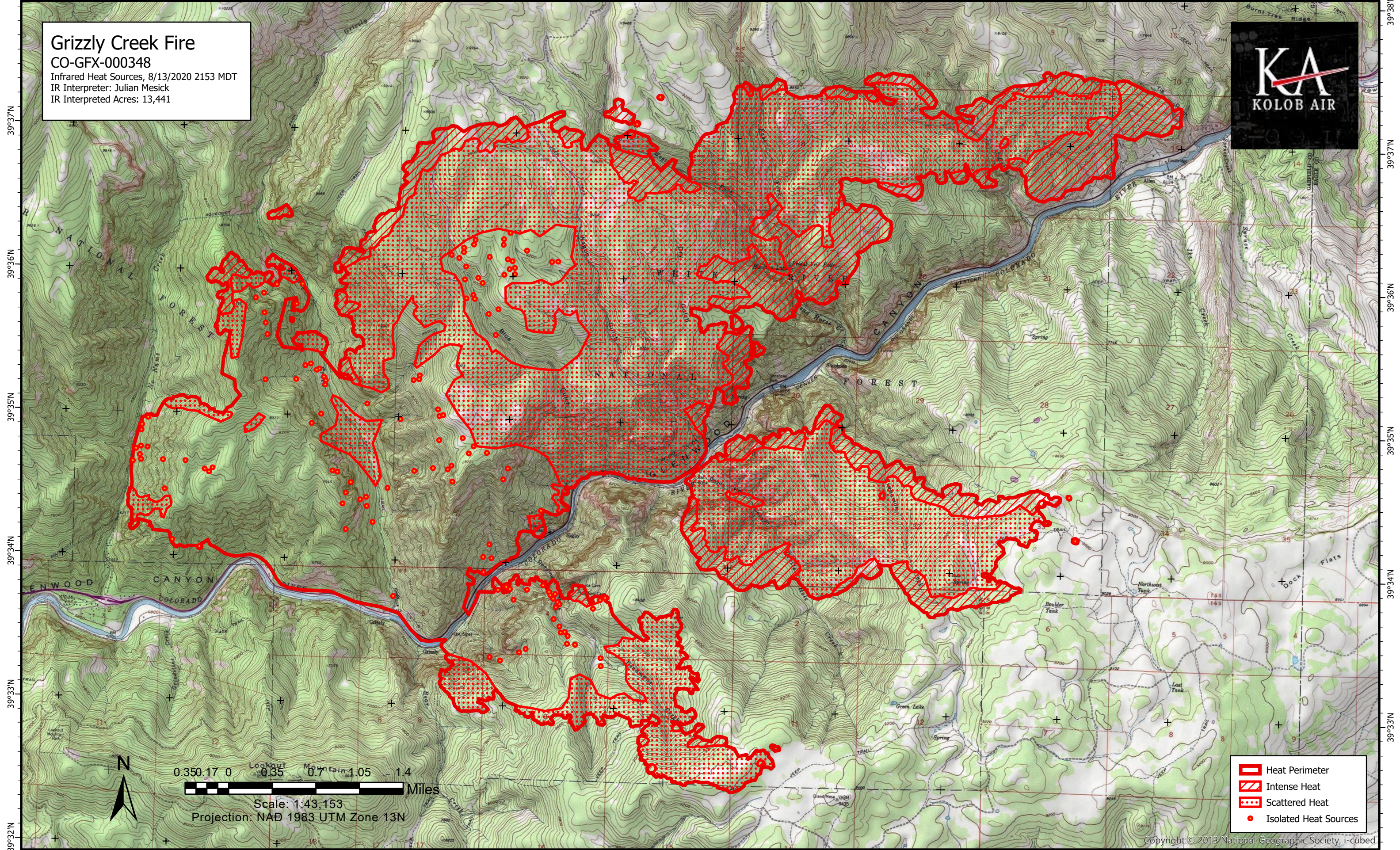


107°18'W 107°17'W 107°16'W 107°15'W 107°14'W 107°13'W 107°12'W 107°11'W 107°10'W 107°9'W 107°8'W 107°7'W

Grizzly Creek Fire
CO-GFX-000348
Infrared Heat Sources, 8/13/2020 2153 MDT
IR Interpreter: Julian Mesick
IR Interpreted Acres: 13,441



0.35 0.17 0 0.35 0.7 1.05 1.4
Scale: 1:43,153
Projection: NAD 1983 UTM Zone 13N
Miles

- Heat Perimeter
- Intense Heat
- Scattered Heat
- Isolated Heat Sources

107°18'W 107°17'W 107°16'W 107°15'W 107°14'W 107°13'W 107°12'W 107°11'W 107°10'W 107°9'W 107°8'W 107°7'W