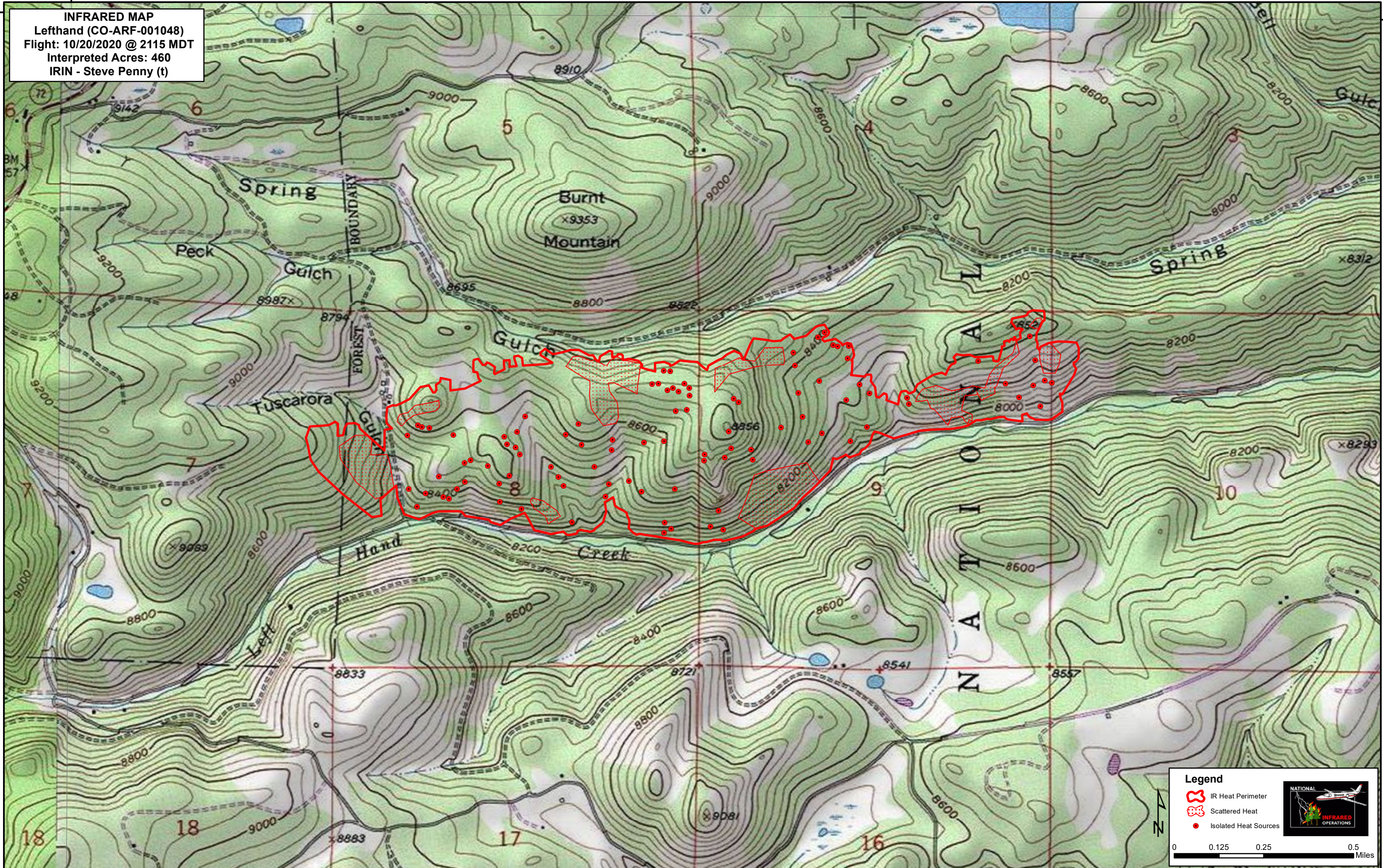


105°30'0"W

40°50'0"N


INFRARED MAP
Lefthand (CO-ARF-001048)
Flight: 10/20/2020 @ 2115 MDT
Interpreted Acres: 460
IRIN - Steve Penny (t)



40°50'0"N

Legend

- IR Heat Perimeter
- Scattered Heat
- Isolated Heat Sources



0 0.125 0.25 0.5 Miles

105°30'0"W