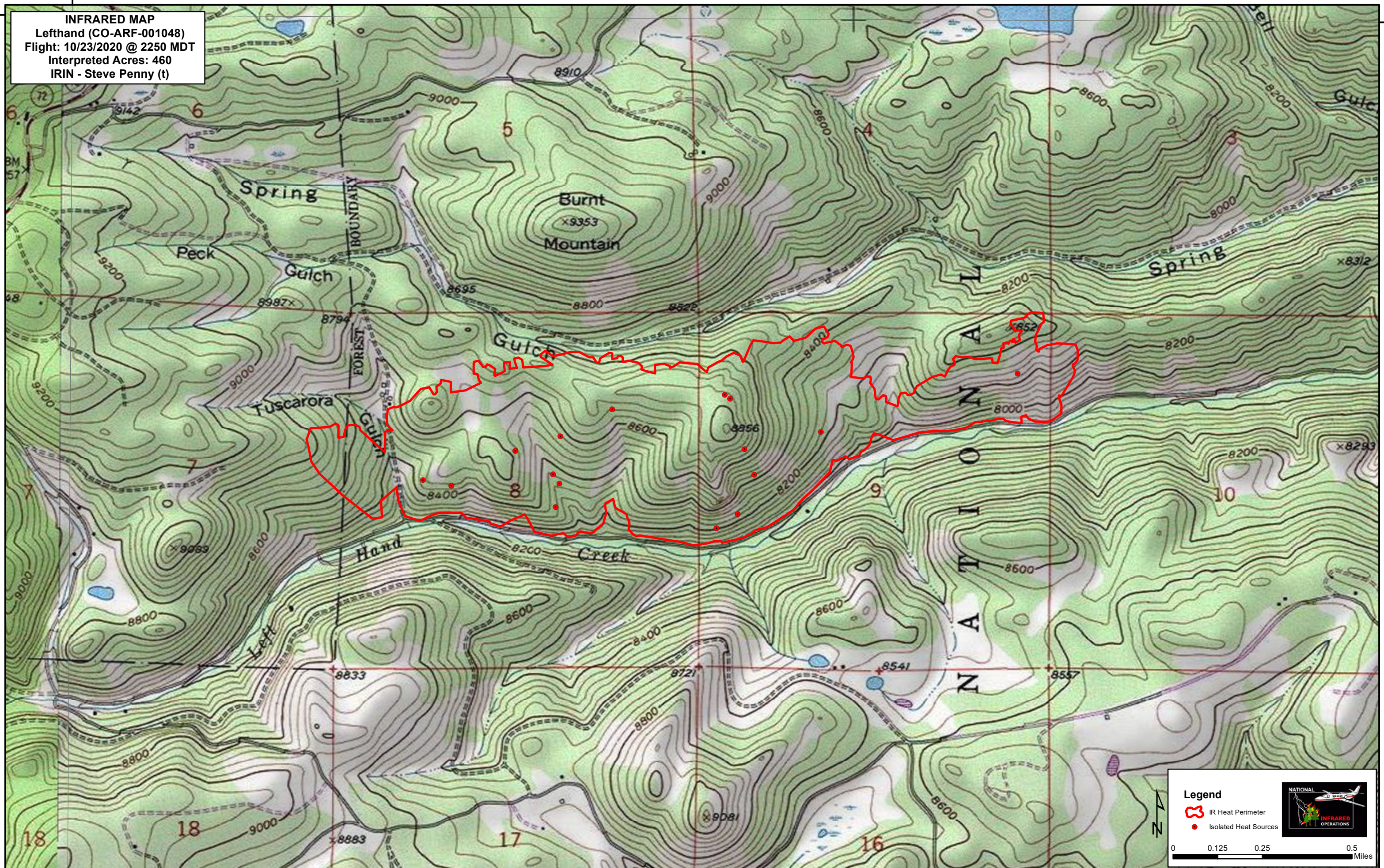


105°30'0"W

40°50'0"N

**INFRARED MAP**  
**Lefthand (CO-ARF-001048)**  
**Flight: 10/23/2020 @ 2250 MDT**  
**Interpreted Acres: 460**  
**IRIN - Steve Penny (t)**




40°50'0"N

105°30'0"W

**Legend**

- IR Heat Perimeter
- Isolated Heat Sources



0 0.125 0.25 0.5 Miles