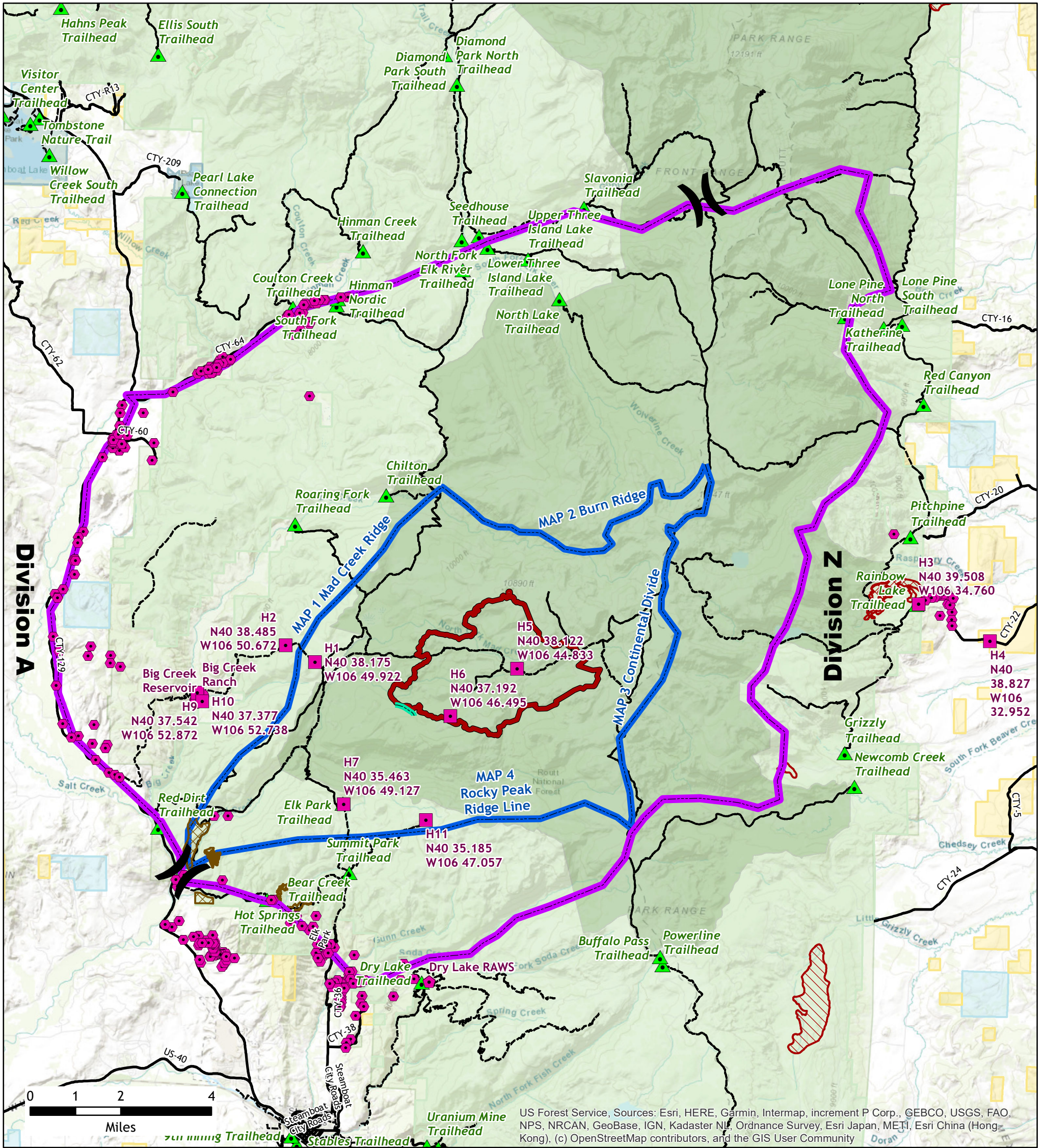
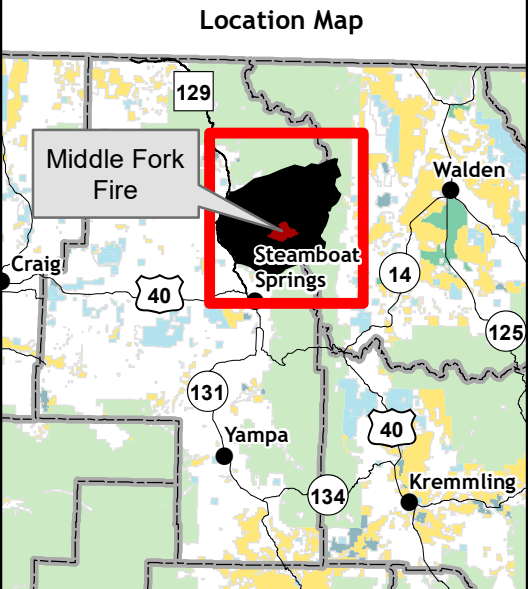


Middle Fork Fire WY-MRF-000353 T8N R83-84W 4,806.93 Acres



US Forest Service, Sources: Esri, HERE, Garmin, Intermap, increment P Corp., GEBCO, USGS, FAO, NPS, NRCAN, GeoBase, IGN, Kadaster NL, Ordnance Survey, Esri Japan, METI, Esri China (Hong Kong), (c) OpenStreetMap contributors, and the GIS User Community

- Helispot
- Point of Interest
- ◆ RAWS Station
- Structures Assessed
- ▭ Middle Fork Planning Area
- ▭ South Fork Drainage Fire Edge
- ▭ Middle Fork Fire (09/14/2020)
- ▭ Mastification Fuels Reduction Project Area
- ▭ Management Action Plan
- ▲ Trailheads
- ▭ Equipment Avoidance Area
- ▭ Fire Retardant Avoidance Area (EIS Sensitive)
- Roads
- Trails
- ▭ USFS Wilderness Areas
- Surface Management Status**
- ▭ Bureau of Land Management
- ▭ Private
- ▭ State
- ▭ State, County, City; Areas
- ▭ US Forest Service



4,806.93 - USFS Acres



No warranty is made by the Bureau of Land Management as to the accuracy, reliability, or completeness of these data for individual use or aggregation use with other data. All boundaries are an approximate representation.