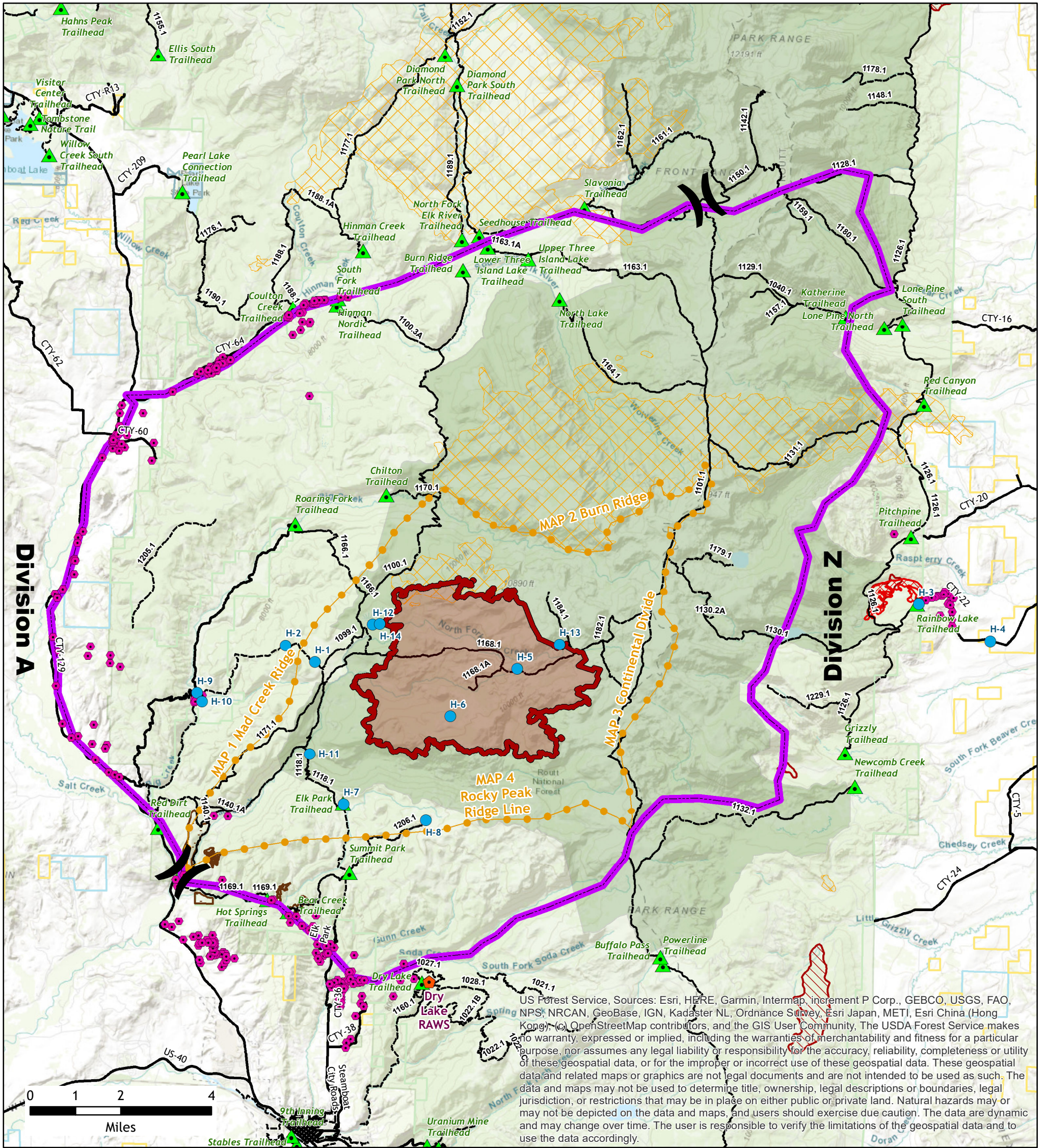


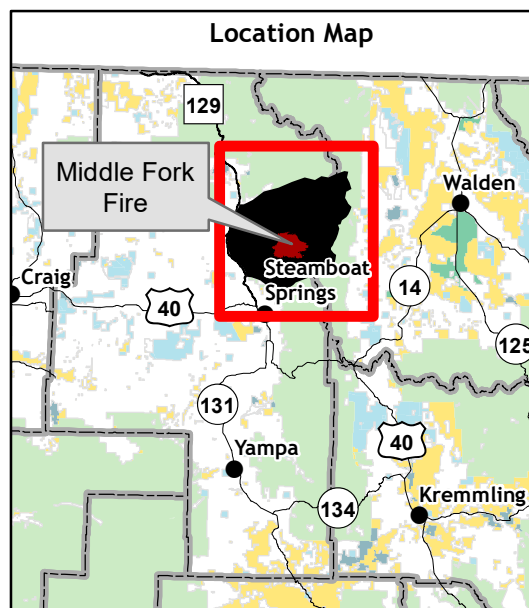
Middle Fork Fire WY-MRF-000353 Planning Area



US Forest Service, Sources: Esri, HERE, Garmin, Intermap, increment P Corp., GEBCO, USGS, FAO, NPS, NRCAN, GeoBase, IGN, Kadaster NL, Ordnance Survey, Esri Japan, METI, Esri China (Hong Kong), (c) OpenStreetMap contributors, and the GIS User Community, The USDA Forest Service makes no warranty, expressed or implied, including the warranties of merchantability and fitness for a particular purpose, nor assumes any legal liability or responsibility for the accuracy, reliability, completeness or utility of these geospatial data, or for the improper or incorrect use of these geospatial data. These geospatial data and related maps or graphics are not legal documents and are not intended to be used as such. The data and maps may not be used to determine title, ownership, legal descriptions or boundaries, legal jurisdiction, or restrictions that may be in place on either public or private land. Natural hazards may or may not be depicted on the data and maps, and users should exercise due caution. The data are dynamic and may change over time. The user is responsible to verify the limitations of the geospatial data and to use the data accordingly.

8,720 USFS Acres Burned To-Date
664 Acre Growth 09/29 - 10/02

- Middle Fork Planning Area
- Middle Fork Fire (10/02/20 14:51)
- Helispot
- RAWS Station
- Structures Assessed
- Trailheads
- Management Action Point
- Roads
- Trails
- Equipment Avoidance Area
- Fire Retardant Avoidance Area
- Fuels Reduction Area
- Fire Perimeter (All Years)
- USFS Wilderness Areas
- Surface Management Status**
- Bureau of Land Management
- Private
- State, County, City; Areas
- US Forest Service



Scan this code with a mobile device to access Middle Fork Fire Maps



No warranty is made by the United States Government as to the accuracy, reliability, or completeness of these data for individual use or aggregation use with other data.

All boundaries are an approximate representation
10/2/2020