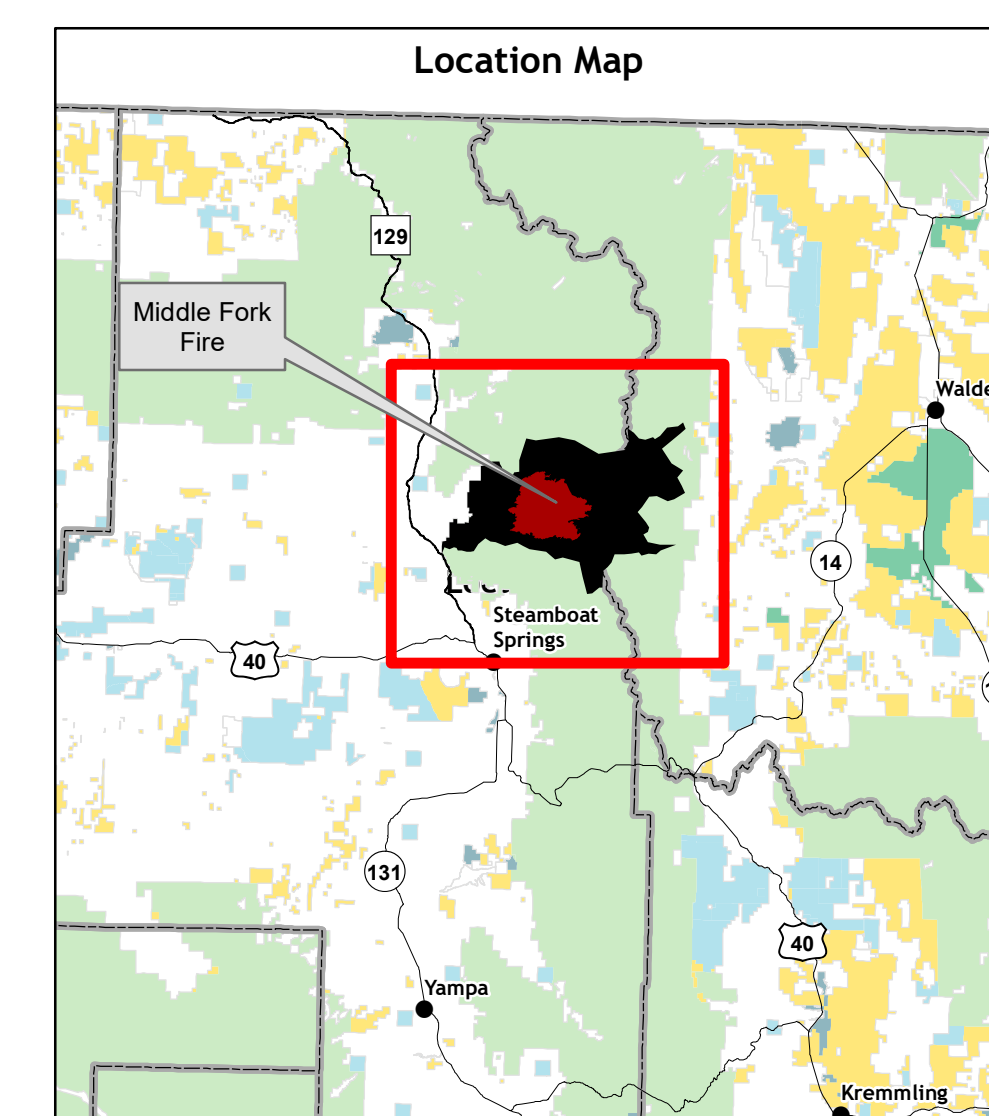


Middle Fork Fire WY-MRF-000353 Public Information

11,005 USFS Acres Burned To-Date
951 Acre Growth 10/06 - 10/07

- Closure Area (09/17/2020)
- Fire Progression Week 1
- Week 2
- Week 3
- Week 4
- Week 5
- Middle Fork Fire (10/07/20 14:45)
- ▲ Trailheads
- Management Action Point
- Roads
- - - Trails
- Fire Perimeter (All Years)
- USFS Wilderness Areas
- Surface Management Status
- Bureau of Land Management
- Private
- State
- US Forest Service



Scan this code with a mobile device to access Middle Fork Fire Maps



0 0.5 1 2
Miles

1:37,852



No warranty is made by the United States Government as to the accuracy, reliability, or completeness of these data for individual use or aggregation use with other data. All boundaries are an approximate representation.

US Forest Service. The USDA Forest Service makes no warranty, expressed or implied, including the guarantee of merchantability and fitness for a particular purpose, nor assumes any legal liability or responsibility for the accuracy, reliability, or completeness or utility of these geospatial data for the purpose or intended use of these geospatial data. These geospatial data and graphics are for legal disbursement and are not intended to be used as such. The data and maps may not be used to determine title, ownership, legal descriptions or boundaries, legal jurisdiction or jurisdictional boundaries, or for any other purpose. Natural hazards may or may not be depicted on the data and maps, and users should exercise due caution. The data are dynamic and may change over time. The user is responsible to verify the information of the geospatial data and to use the data accordingly.