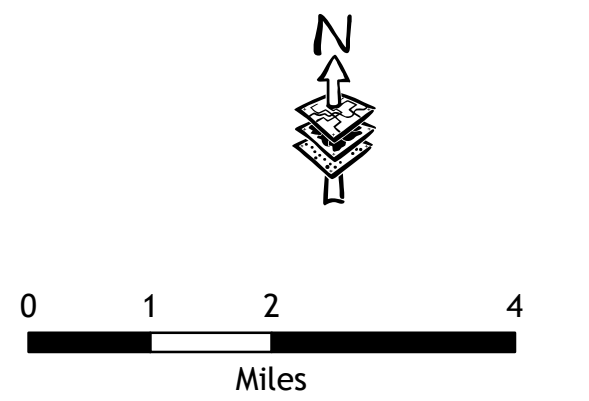
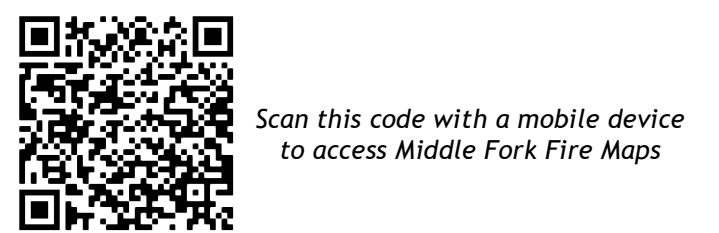
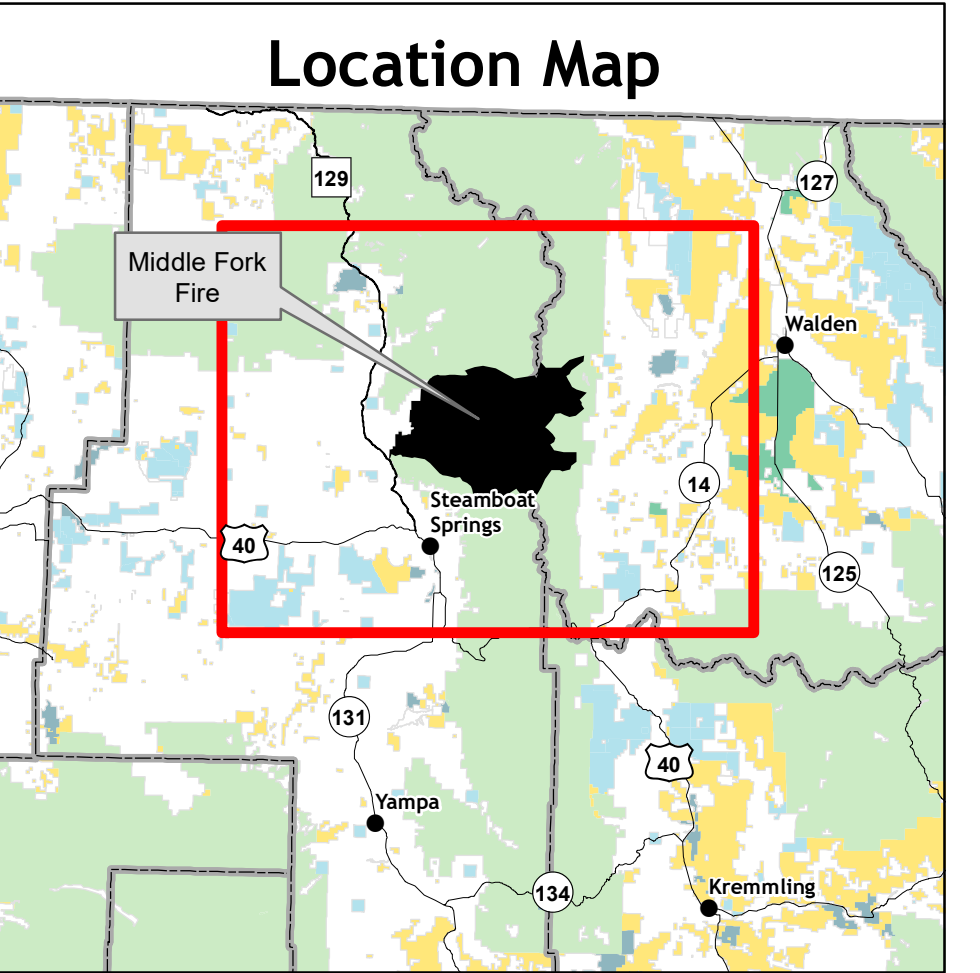
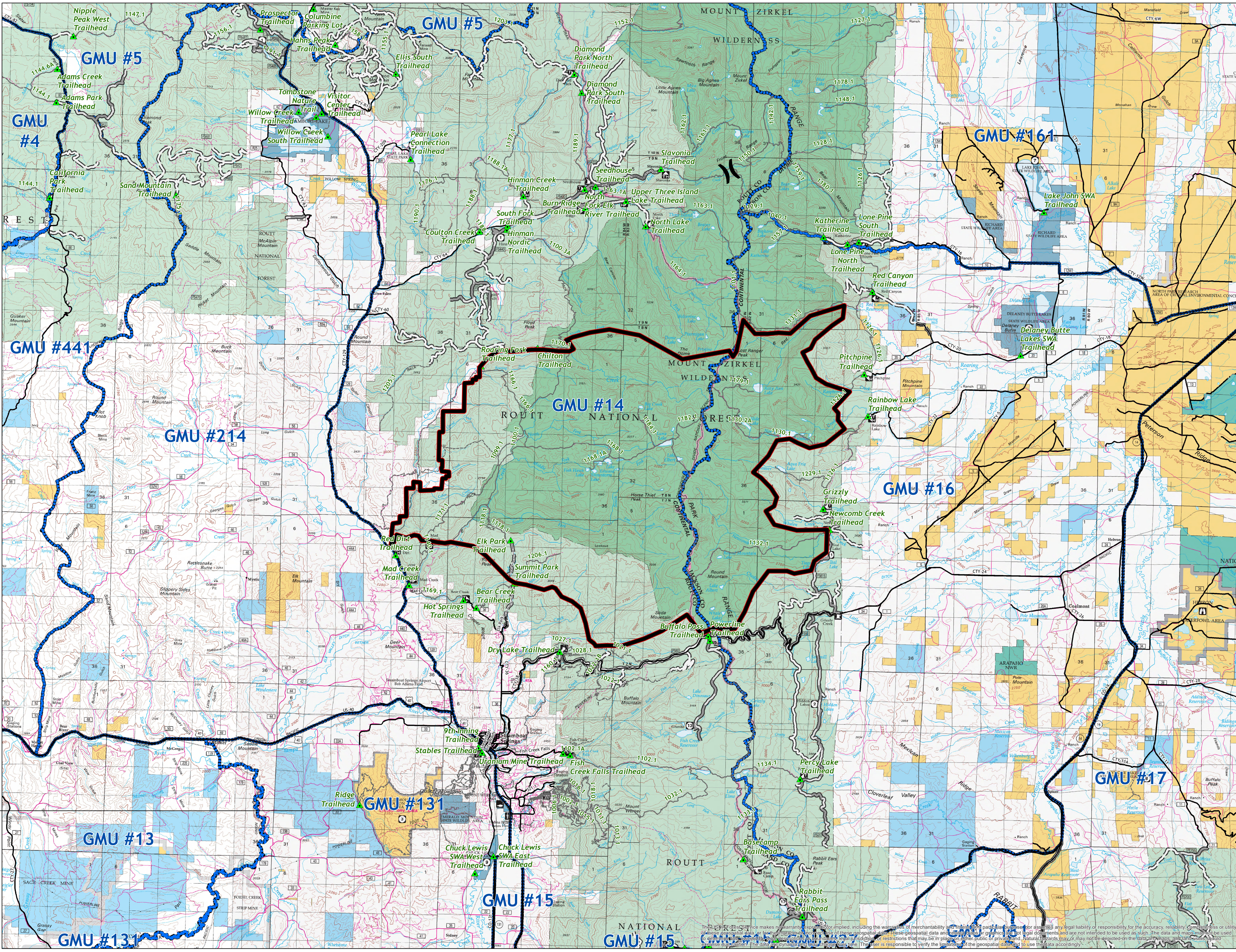


Middle Fork Fire Closure Area Order No. MBRTB-282-2020

- Closure Area (10/08/2020)
 - ▲ Trailheads
 - Trails
 - Roads
 - Paved Road
 - Gravel Road, Suitable for Passenger Car
 - Dirt Road, Suitable for Passenger Car
 - Road, Not Maintained for Passenger Car
 - National Forest System Roads closed to motorized uses
 - Big Game Management Unit Boundary
- Surface Management Status**
- Bureau of Land Management
 - Private
 - State
 - State, County, City; Areas
 - US Fish and Wildlife Service
 - US Forest Service



No warranty is made by the United States Government as to the accuracy, reliability, or completeness of these data for individual use or aggregation use with other data. All boundaries are an approximate representation.



The US Forest Service makes no warranty, expressed or implied, including the warranties of merchantability and fitness for a particular purpose, or assumes any legal liability or responsibility for the accuracy, reliability, completeness, or utility of these geospatial data or for the appropriate use of these geospatial data. These geospatial data and related graphics are not legal documents and are not intended to be used as such. The data and maps may be used to generate maps, reports, and other products. The user is responsible to verify the accuracy of the data and maps. The data and maps may be used for purposes not intended by the US Forest Service. The user is responsible to verify the accuracy of the data and maps. The data and maps may be used for purposes not intended by the US Forest Service.