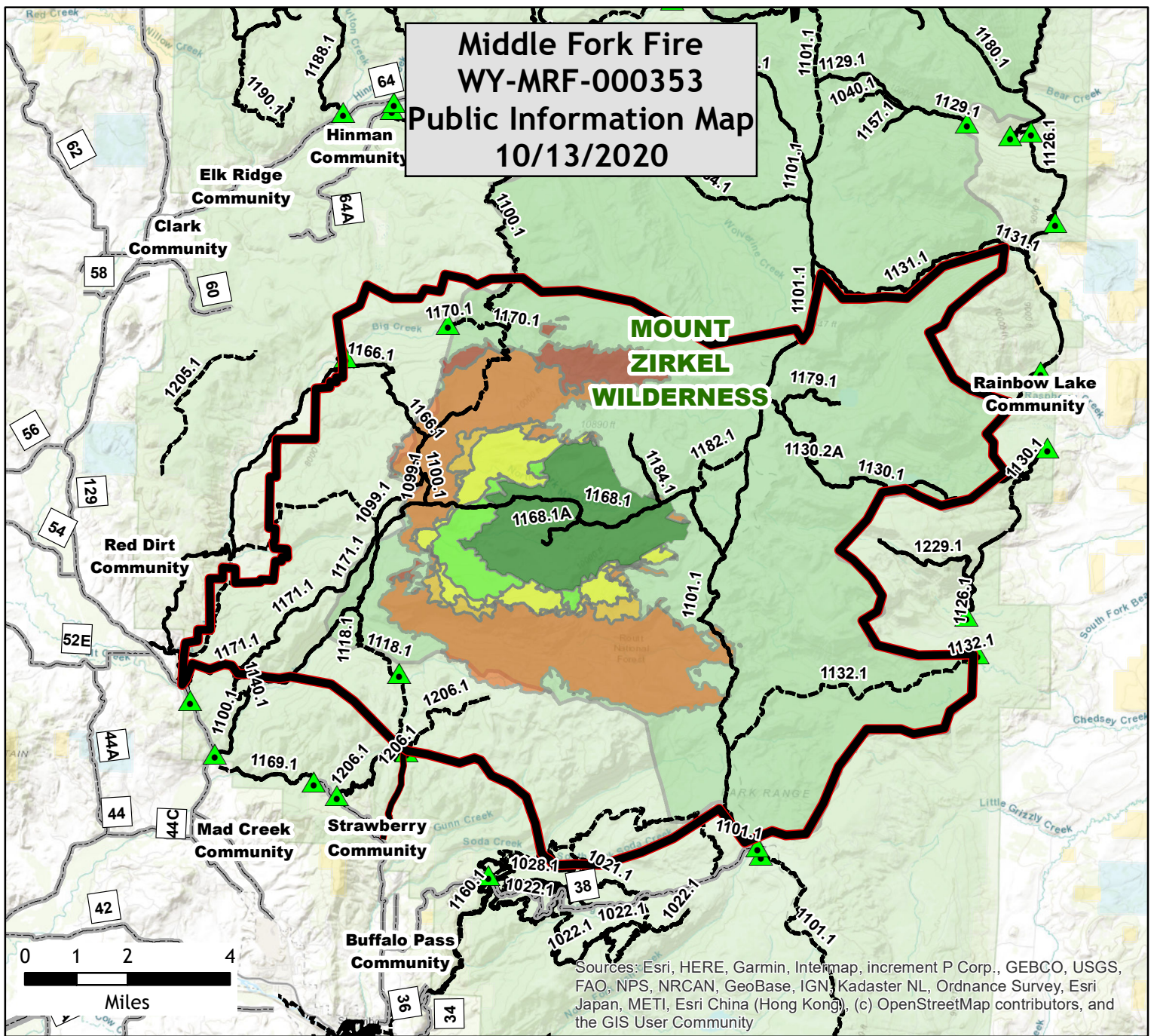


**Middle Fork Fire
WY-MRF-000353
Public Information Map
10/13/2020**

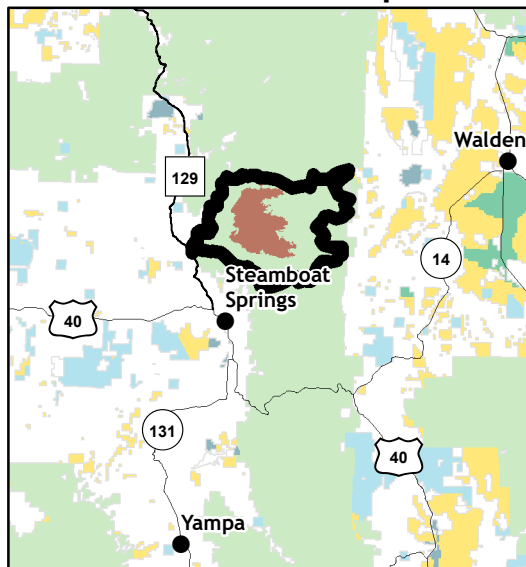


Sources: Esri, HERE, Garmin, Intermap, increment P Corp., GEBCO, USGS, FAO, NPS, NRCAN, GeoBase, IGN, Kadaster NL, Ordnance Survey, Esri Japan, METI, Esri China (Hong Kong), (c) OpenStreetMap contributors, and the GIS User Community

19,300 USFS Acres Burned To-Date
1,468 Acre Growth
10/10/20 16:50 - 10/12/20 14:01
 19,254 - Routt County Acres
 46 - Jackson County Acres

- Closure Area (10/11/20)
- NFSR 314 Closure
- Trailheads
- Highway
- County Roads
- Roads
- Trails
- Wilderness Area
- Fire Progression
 - Week 1
 - Week 2
 - Week 3
 - Week 4
 - Week 5
 - Week 6
- Surface Management Status**
 - Bureau of Land Management
 - Private
 - State
 - US Forest Service

Location Map



Scan this code with a mobile device to access the Middle Fork Fire Public Information Maps



No warranty is made by the United States Government as to the accuracy, reliability, or completeness of these data for individual use or aggregation use with other data. All boundaries are an approximate representation.