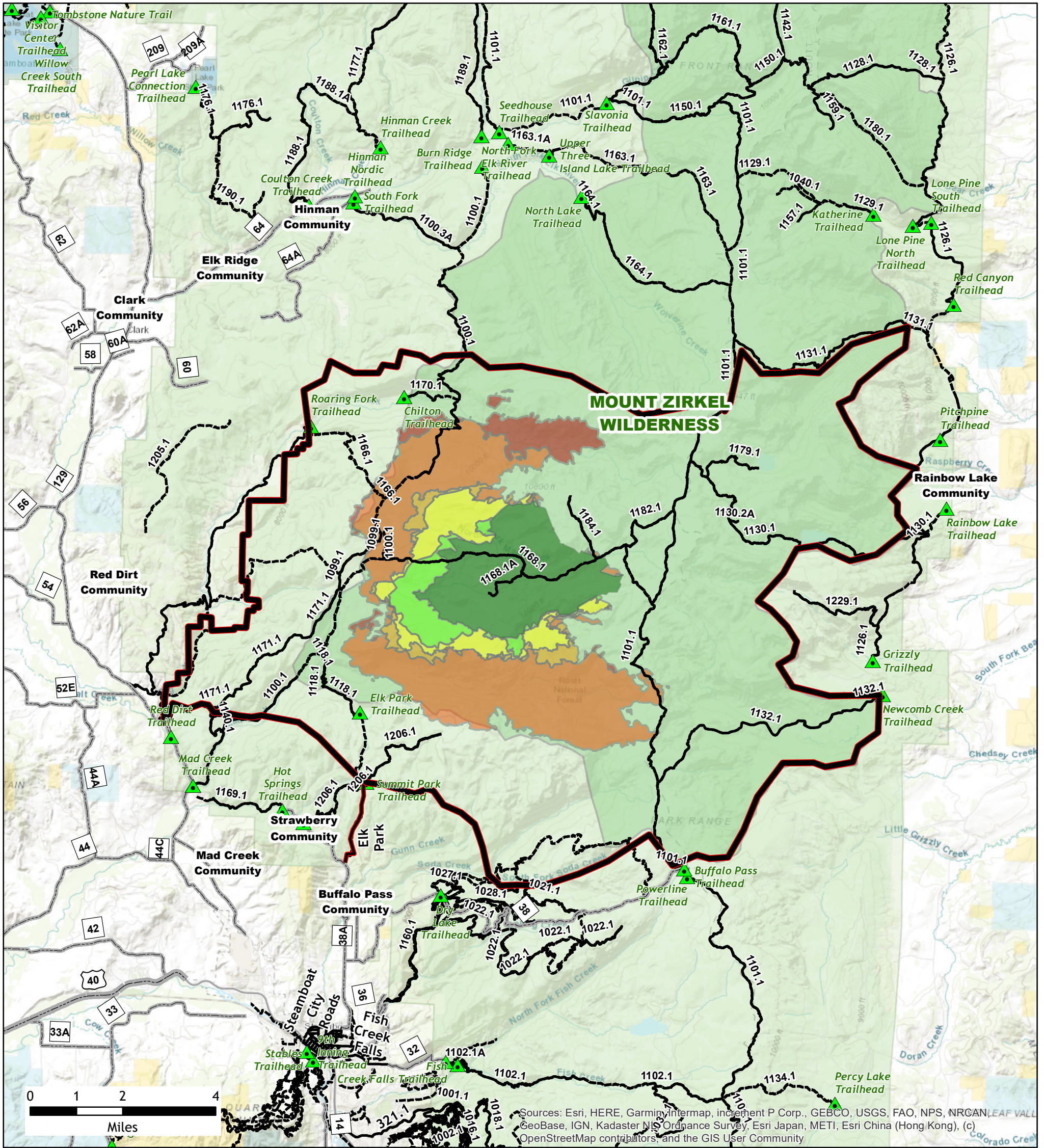


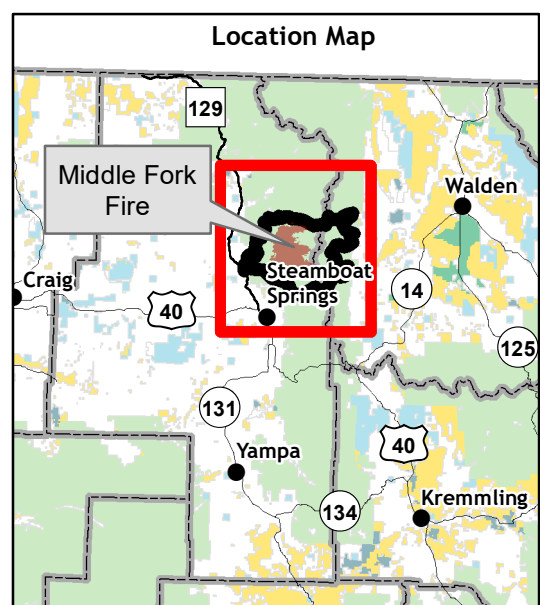
# Middle Fork Fire WY-MRF-000353 Public Information Map 10/13/2020



Sources: Esri, HERE, Garmin, Intermap, increment P Corp., GEBCO, USGS, FAO, NPS, NRCAN, EAF VALL, GeoBase, IGN, Kadaster NL, Ordnance Survey, Esri Japan, METI, Esri China (Hong Kong), (c) OpenStreetMap contributors, and the GIS User Community

**19,300 USFS Acres Burned To-Date**  
**1,468 Acre Growth**  
**10/10/20 16:50 - 10/12/20 14:01**  
 19,254 - Routt County Acres  
 46 - Jackson County Acres

- Closure Area (10/11/20)
- NFSR 314 Closure
- Trailheads
- Highway
- County Roads
- Roads
- Trails
- Wilderness Area
- Week 1
- Week 2
- Week 3
- Week 4
- Week 5
- Week 6
- Bureau of Land Management
- Private
- State
- State, County, City; Areas
- US Forest Service



Scan this code with a mobile device to access the Middle Fork Fire Public Information Maps



No warranty is made by the United States Government as to the accuracy, reliability, or completeness of these data for individual use or aggregation use with other data. All boundaries are an approximate representation.