

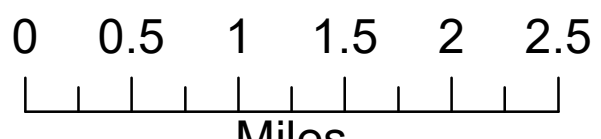
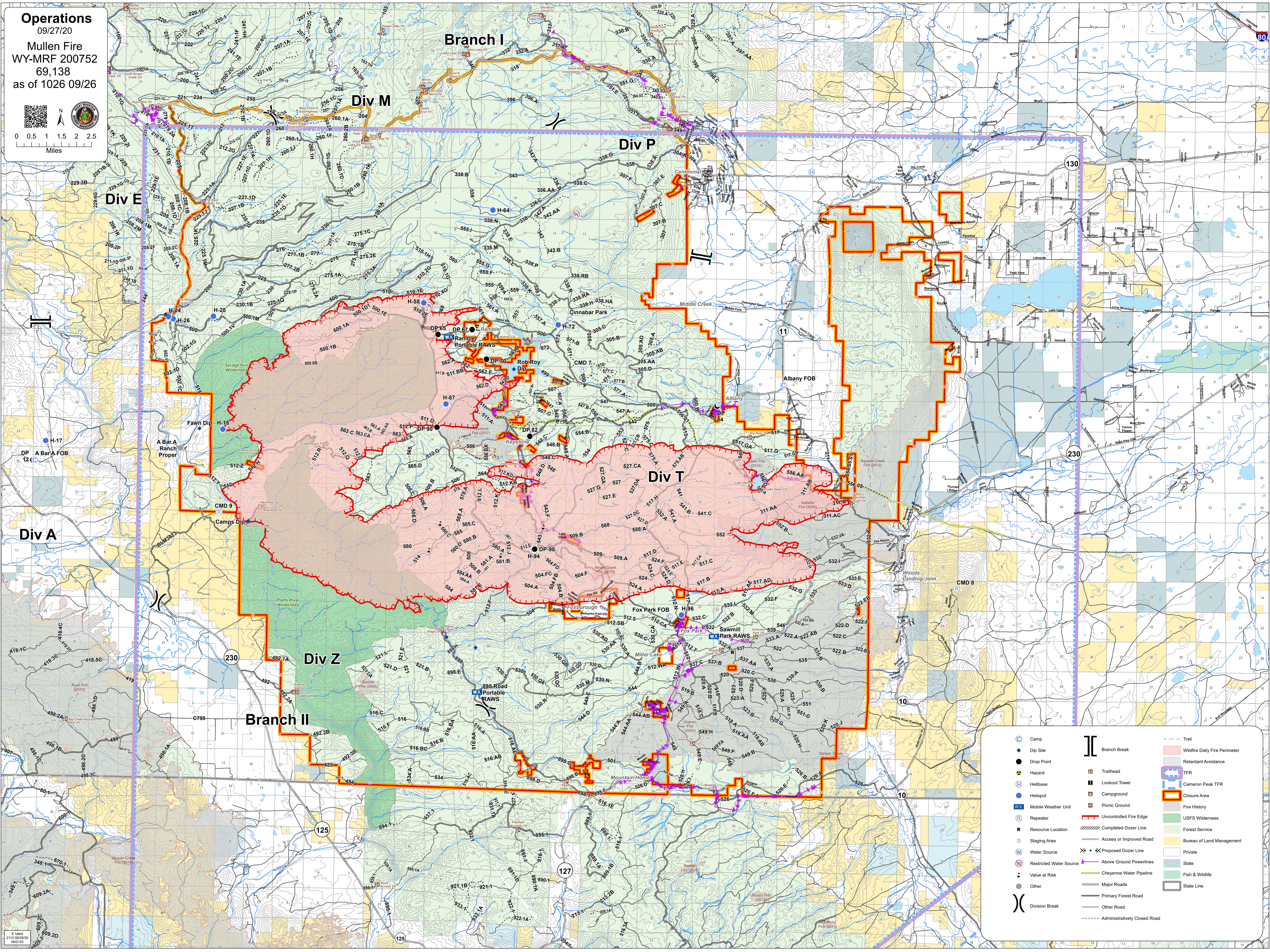


Operations
09/27/20

Mullen Fire
WY-MRF 200752
69,138
as of 1026 09/26

	Camp		Branch Break		Wildfire Daily Fire Perimeter
	Drop Point		Trailhead		Retardant Avoidance
	Hazard		Lookout Tower		TFR
	Helibase		Campground		Cameron Peak TFR
	Helispot		Picnic Ground		Closure Area
	Mobile Weather Unit		Uncontrolled Fire Edge		Fire History
	Repeater		Completed Dozer Line		USFS Wilderness
	Resource Location		Access or Improved Road		Forest Service
	Staging Area		Proposed Dozer Line		Bureau of Land Management
	Water Source		Above Ground Powerlines		Private
	Restricted Water Source		Cheyenne Water Pipeline		State
	Value at Risk		Major Roads		Fish & Wildlife
	Other		Primary Forest Road		State Line
	Division Break		Other Road		Administratively Closed Road