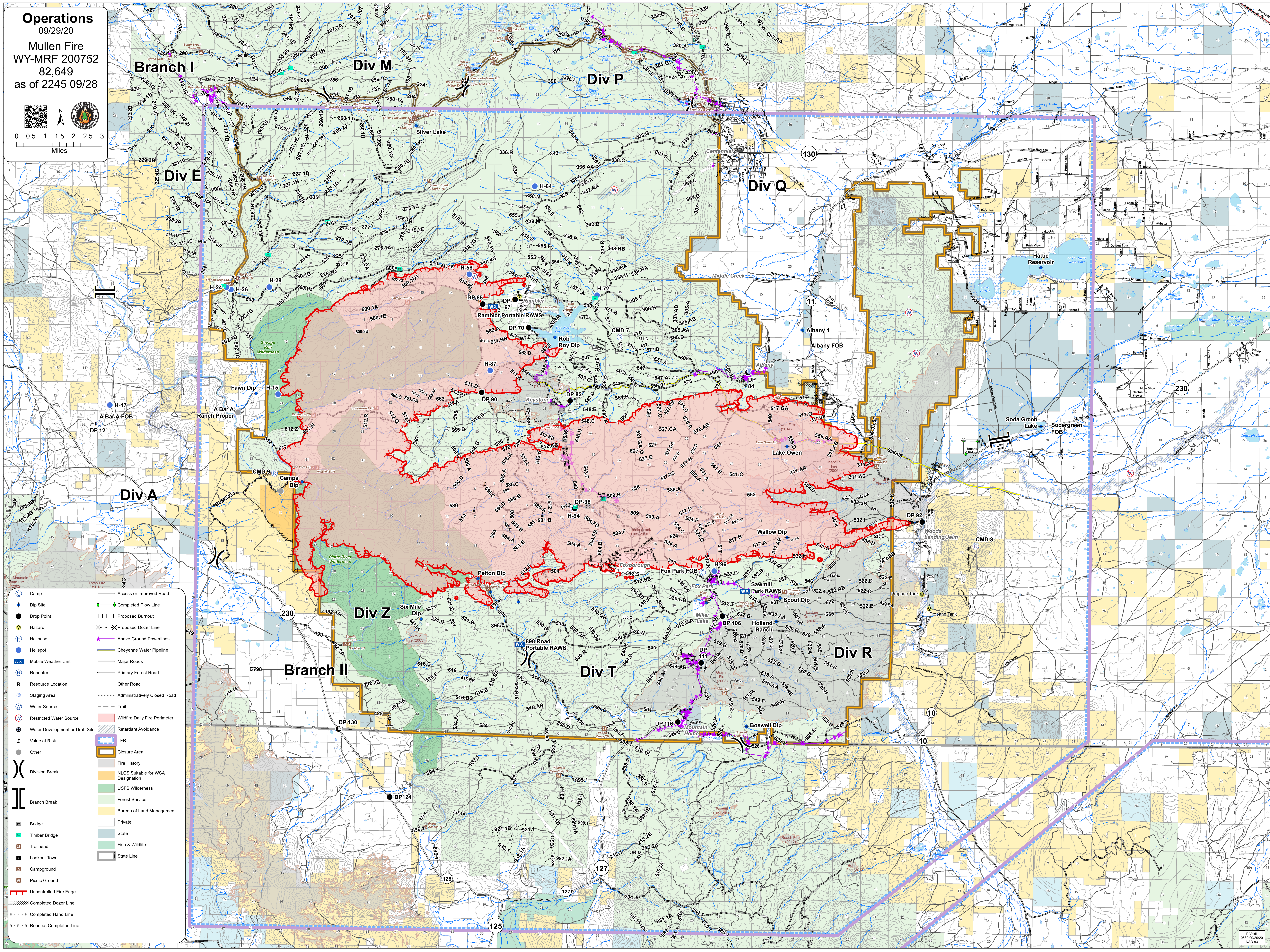


Operations  
09/29/20

Mullen Fire  
WY-MRF 200752  
82,649  
as of 2245 09/28



0 0.5 1 1.5 2 2.5 3  
Miles



- Camp
  - Dip Site
  - Drop Point
  - Hazard
  - Helibase
  - Helispot
  - Mobile Weather Unit
  - Repeater
  - Resource Location
  - Staging Area
  - Water Source
  - Restricted Water Source
  - Water Development or Draft Site
  - Value at Risk
  - Other
  - Division Break
  - Branch Break
  - Bridge
  - Timber Bridge
  - Trailhead
  - Lookout Tower
  - Campground
  - Picnic Ground
  - Uncontrolled Fire Edge
  - Completed Dozer Line
  - Completed Hand Line
  - Road as Completed Line
- Access or Improved Road
  - Completed Plow Line
  - Proposed Burnout
  - Proposed Dozer Line
  - Above Ground Powerlines
  - Cheyenne Water Pipeline
  - Major Roads
  - Primary Forest Road
  - Other Road
  - Administratively Closed Road
  - Trail
  - Wildfire Daily Fire Perimeter
  - Retardant Avoidance
  - TFR
  - Closure Area
  - Fire History
  - NLCS Suitable for WSA Designation
  - USFS Wilderness
  - Forest Service
  - Bureau of Land Management
  - Private
  - State
  - Fish & Wildlife
  - State Line