

Operations

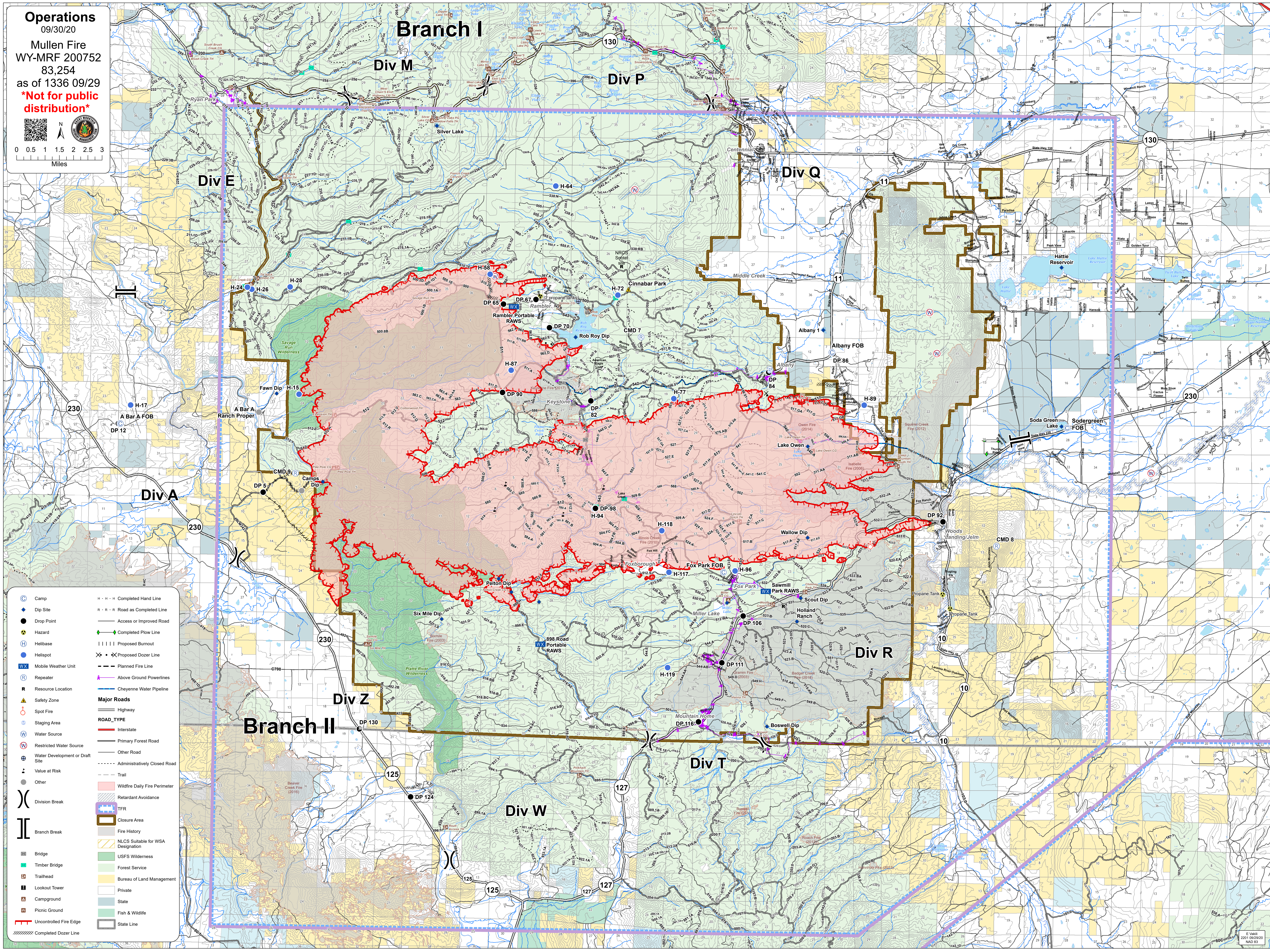
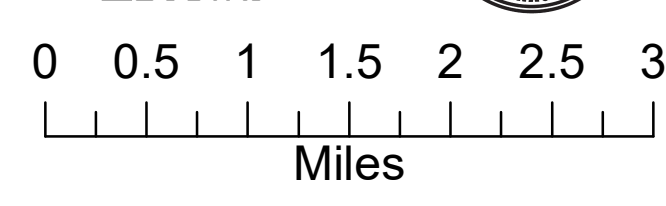
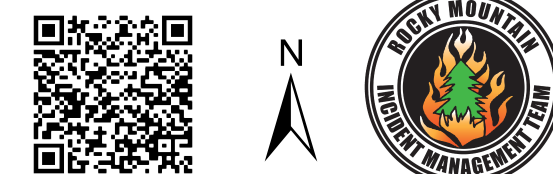
09/30/20

Mullen Fire
WY-MRF 200752

83,254

as of 1336 09/29

Not for public distribution



- Camp
 - Dip Site
 - Drop Point
 - Hazard
 - Helibase
 - Helispot
 - Mobile Weather Unit
 - Repeater
 - Resource Location
 - Safety Zone
 - Spot Fire
 - Staging Area
 - Water Source
 - Restricted Water Source
 - Water Development or Draft Site
 - Value at Risk
 - Other
 - Division Break
 - Branch Break
 - Bridge
 - Timber Bridge
 - Trailhead
 - Lookout Tower
 - Campground
 - Picnic Ground
 - Uncontrolled Fire Edge
 - Completed Dozer Line
 - Completed Hand Line
 - Road as Completed Line
 - Access or Improved Road
 - Completed PLOW Line
 - Proposed Burnout
 - Proposed Dozer Line
 - Planned Fire Line
 - Above Ground Powerlines
 - Cheyenne Water Pipeline
- Major Roads**
- Highway
 - Interstate
 - Primary Forest Road
 - Other Road
 - Administratively Closed Road
 - Trail
- ROAD_TYPE**
- Interstate
 - Primary Forest Road
 - Other Road
 - Administratively Closed Road
 - Trail
- Wildfire Daily Fire Perimeter
 - Retardant Avoidance
 - TFR
 - Closure Area
 - Fire History
 - NLCS Suitable for WSA Designation
 - USFS Wilderness
 - Forest Service
 - Bureau of Land Management
 - Private
 - State
 - Fish & Wildlife
 - State Line