

**Operations**

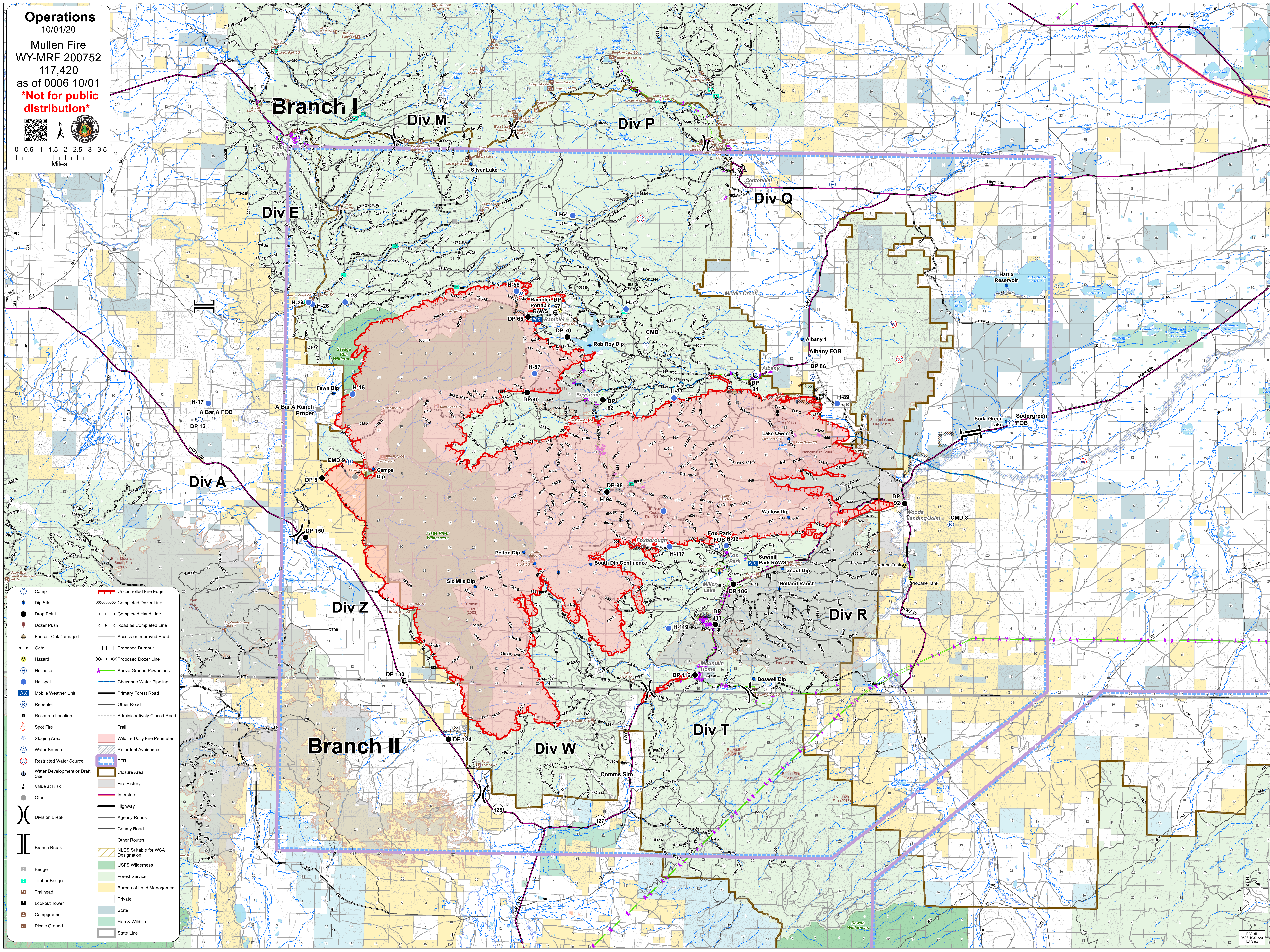
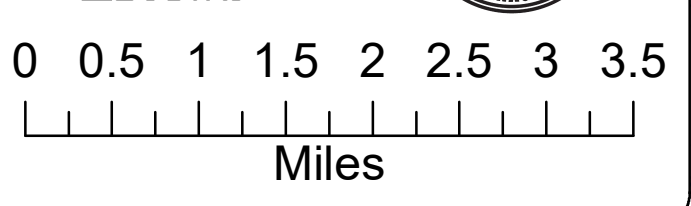
10/01/20

Mullen Fire  
WY-MRF 200752

117,420

as of 0006 10/01

**\*Not for public distribution\***



- Camp
- Dip Site
- Drop Point
- Dozer Push
- Fence - Cut/Damaged
- Gate
- Hazard
- Helibase
- Helispot
- Mobile Weather Unit
- Repeater
- Resource Location
- Spot Fire
- Staging Area
- Water Source
- Restricted Water Source
- Water Development or Draft Site
- Value at Risk
- Other
- Division Break
- Branch Break
- Bridge
- Timber Bridge
- Trailhead
- Lookout Tower
- Campground
- Picnic Ground
- Uncontrolled Fire Edge
- Completed Dozer Line
- Completed Hand Line
- Road as Completed Line
- Access or Improved Road
- Proposed Burnout
- Proposed Dozer Line
- Above Ground Powerlines
- Cheyenne Water Pipeline
- Primary Forest Road
- Other Road
- Administratively Closed Road
- Trail
- Wildfire Daily Fire Perimeter
- Retardant Avoidance
- TFR
- Closure Area
- Fire History
- Interstate
- Highway
- Agency Roads
- County Road
- Other Routes
- NLCS Suitable for WSA Designation
- USFS Wilderness
- Forest Service
- Bureau of Land Management
- Private
- State
- Fish & Wildlife
- State Line