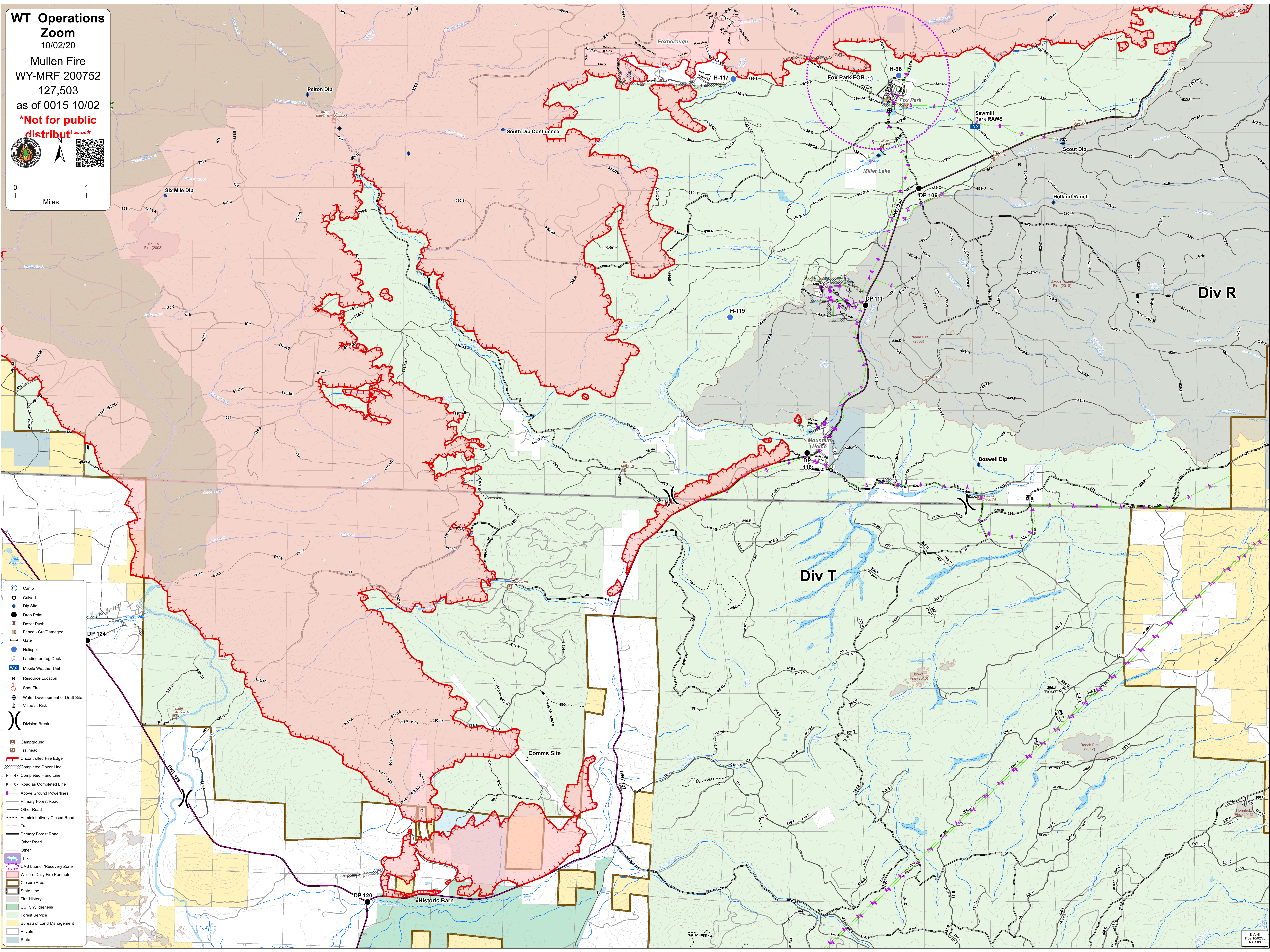
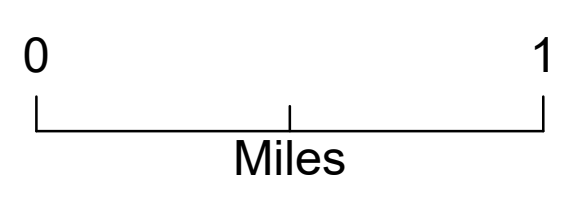
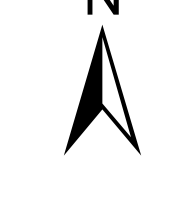


WT Operations Zoom
10/02/20

Mullen Fire
WY-MRF 200752
127,503
as of 0015 10/02

Not for public distribution



- Camp
- Culvert
- Dip Site
- Drop Point
- ▣ Dozer Push
- ▣ Fence - Cut/Damaged
- ▣ Gate
- Helipad
- ▣ Landing or Log Deck
- WX Mobile Weather Unit
- R Resource Location
- Spot Fire
- Water Development or Draft Site
- Value at Risk
- ⌋ Division Break
- ▣ Campground
- ▣ Trailhead
- ▣ Uncontrolled Fire Edge
- ▣ Completed Dozer Line
- H - H - Completed Hand Line
- R - R - Road as Completed Line
- ▣ Above Ground Powerlines
- ▣ Primary Forest Road
- ▣ Other Road
- ▣ Administratively Closed Road
- ▣ Trail
- ▣ Primary Forest Road
- ▣ Other Road
- ▣ Other
- ▣ TFR
- ▣ UAS Launch/Recovery Zone
- ▣ Wildfire Daily Fire Perimeter
- ▣ Closure Area
- ▣ State Line
- ▣ Fire History
- ▣ USFS Wilderness
- ▣ Forest Service
- ▣ Bureau of Land Management
- ▣ Private
- ▣ State