

**Operations**

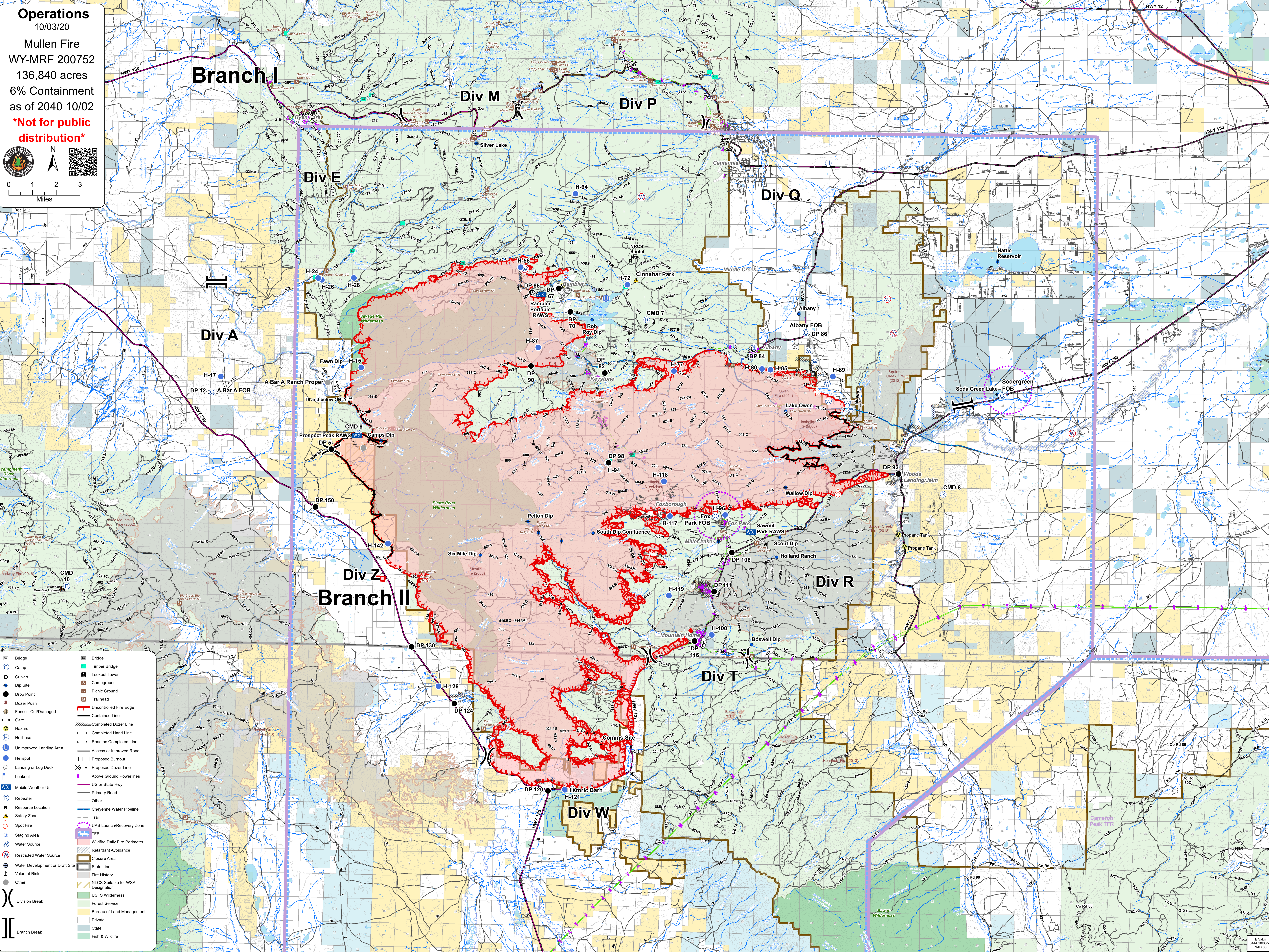
10/03/20

Mullen Fire  
WY-MRF 200752  
136,840 acres  
6% Containment  
as of 2040 10/02

**\*Not for public distribution\***



0 1 2 3  
Miles



- Bridge
- Camp
- Culvert
- Dip Site
- Drop Point
- Dozer Push
- Fence - Cut/Damaged
- Gate
- Hazard
- Helibase
- Unimproved Landing Area
- Helispot
- Landing or Log Deck
- Lookout
- Mobile Weather Unit
- Repeater
- Resource Location
- Safety Zone
- Spot Fire
- Staging Area
- Water Source
- Restricted Water Source
- Water Development or Draft Site
- Value at Risk
- Other
- Division Break
- Branch Break
- Bridge
- Timber Bridge
- Lookout Tower
- Campground
- Picnic Ground
- Trailhead
- Uncontrolled Fire Edge
- Contained Line
- Completed Dozer Line
- Completed Hand Line
- Road as Completed Line
- Access or Improved Road
- Proposed Burnout
- Proposed Dozer Line
- Above Ground Powerlines
- US or State Hwy
- Primary Road
- Other
- Cheyenne Water Pipeline
- Trail
- UAS Launch/Recovery Zone
- TFR
- Wildfire Daily Fire Perimeter
- Retardant Avoidance
- Closure Area
- State Line
- Fire History
- NLCS Suitable for WSA Designation
- USFS Wilderness
- Forest Service
- Bureau of Land Management
- Private
- State
- Fish & Wildlife