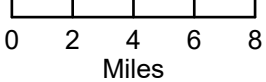


# Air Routes

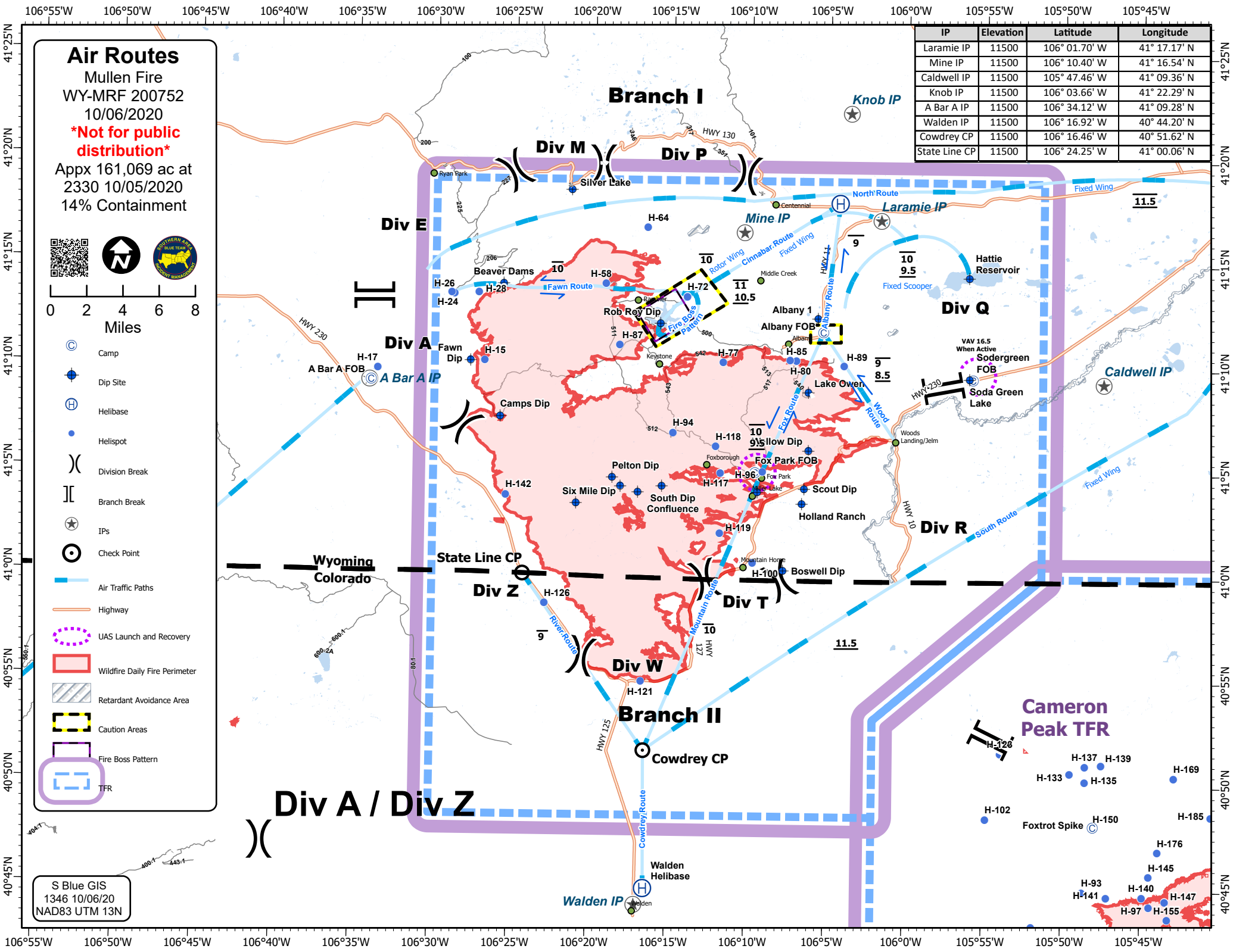
Mullen Fire  
 WY-MRF 200752  
 10/06/2020  
 \*Not for public distribution\*  
 Appx 161,069 ac at  
 2330 10/05/2020  
 14% Containment



- Camp
- Dip Site
- Helibase
- Helispot
- Division Break
- Branch Break
- IPs
- Check Point
- Air Traffic Paths
- Highway
- UAS Launch and Recovery
- Wildfire Daily Fire Perimeter
- Retardant Avoidance Area
- Caution Areas
- Fire Boss Pattern
- TFR

S Blue GIS  
 1346 10/06/20  
 NAD83 UTM 13N

IP	Elevation	Latitude	Longitude
Laramie IP	11500	106° 01.70' W	41° 17.17' N
Mine IP	11500	106° 10.40' W	41° 16.54' N
Caldwell IP	11500	105° 47.46' W	41° 09.36' N
Knob IP	11500	106° 03.66' W	41° 22.29' N
A Bar A IP	11500	106° 34.12' W	41° 09.28' N
Walden IP	11500	106° 16.92' W	40° 44.20' N
Cowdrey CP	11500	106° 16.46' W	40° 51.62' N
State Line CP	11500	106° 24.25' W	41° 00.06' N



**Cameron Peak TFR**

**Div A / Div Z**