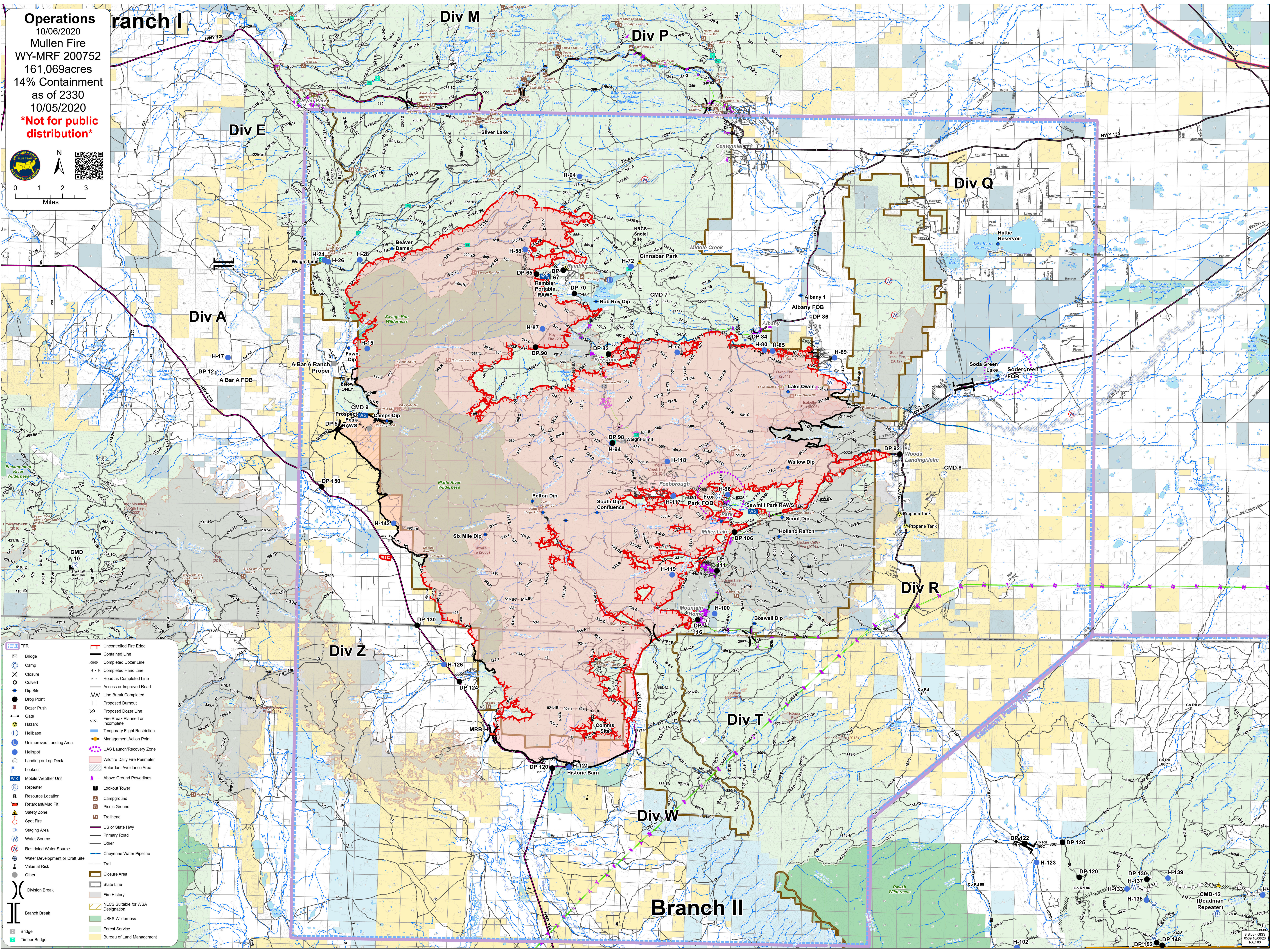
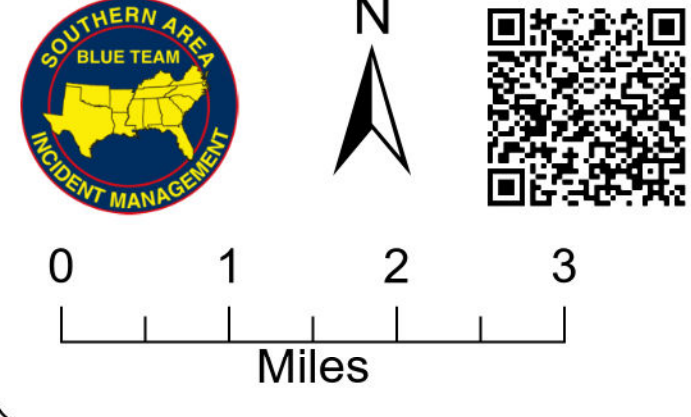


**Operations**  
 10/06/2020  
 Mullen Fire  
 WY-MRF 200752  
 161,069 acres  
 14% Containment  
 as of 2330  
 10/05/2020  
 \*Not for public  
 distribution\*



	TFR		Uncontrolled Fire Edge
	Bridge		Contained Line
	Camp		Completed Dozer Line
	Closure		Completed Hand Line
	Culvert		Road as Completed Line
	Dip Site		Access or Improved Road
	Drop Point		Line Break Completed
	Dozer Push		Proposed Burnout
	Gate		Proposed Dozer Line
	Hazard		Fire Break Planned or Incomplete
	Helibase		Temporary Flight Restriction
	Unimproved Landing Area		Management Action Point
	Helispot		Wildfire Daily Fire Perimeter
	Landing or Log Deck		Retardant Avoidance Area
	Lookout		Above Ground Powerlines
	Mobile Weather Unit		Lookout Tower
	Repeater		Campground
	Resource Location		Picnic Ground
	Retardant/Mud Pit		Trailhead
	Safety Zone		US or State Hwy
	Spot Fire		Primary Road
	Staging Area		Other
	Water Source		Closure Area
	Restricted Water Source		State Line
	Water Development or Draft Site		Fire History
	Value at Risk		NLCIS Suitable for WSA Designation
	Other		USFS Wilderness
	Division Break		Forest Service
	Branch Break		Bureau of Land Management