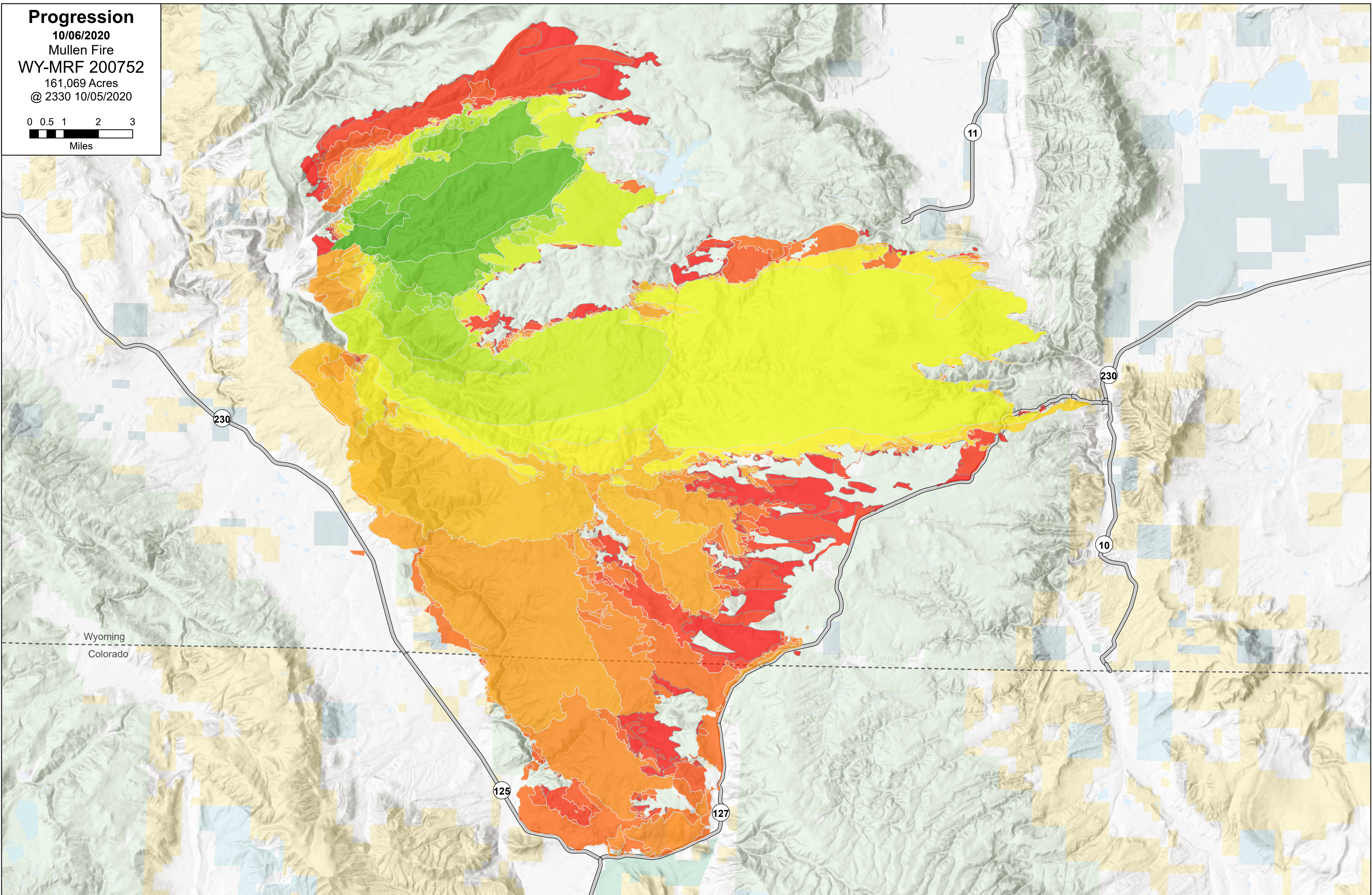
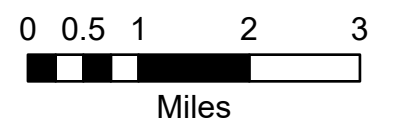


Progression
 10/06/2020
 Mullen Fire
 WY-MRF 200752
 161,069 Acres
 @ 2330 10/05/2020



9/18/2020 - 644 growth acres, 644 total acres	9/23/2020 - 3,110 growth acres, 17,763 total acres	9/28/2020 - 2,329 growth acres, 80,279 total acres	10/3/2020 - 3,300 growth acres, 140,140 total acres*
9/19/2020 - 6,736 growth acres, 7,382 total acres	9/24/2020 - 1,763 growth acres, 19,526 total acres	9/29/2020 - 16,478 growth acres, 96,757 total acres*	10/4/2020 - 11,571 growth acres, 151,711 total acres
9/20/2020 - 5,381 growth acres, 12,763 total acres	9/25/2020 - 16,284 growth acres, 35,810 total acres	9/30/2020 - 20,483 growth acres, 117,240 total acres*	10/5/2020 - 9,524 growth acres, 161,069 total acres
9/21/2020 - 746 growth acres, 13,509 total acres	9/26/2020 - 33,328 growth acres, 69,138 total acres	10/1/2020 - 10,263 growth acres, 127,503 total acres*	
9/22/2020 - 1,144 growth acres, 14,653 total acres	9/27/2020 - 8,767 growth acres, 77,950 total acres	10/2/2020 - 9,337 growth acres, 136,840 total acres*	

Acres generally from MMA flights
 (collected between 1000 and 1530 daily)

*IR flight (between 2200 and 0200)



S Blue - GIS
 10/06/2020
 NAD 83