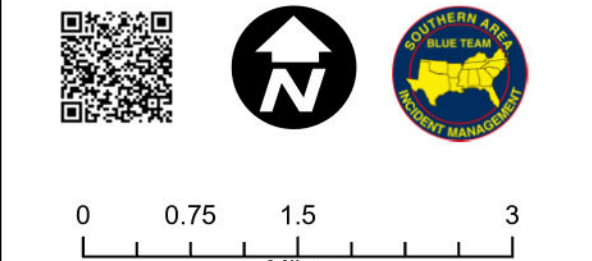
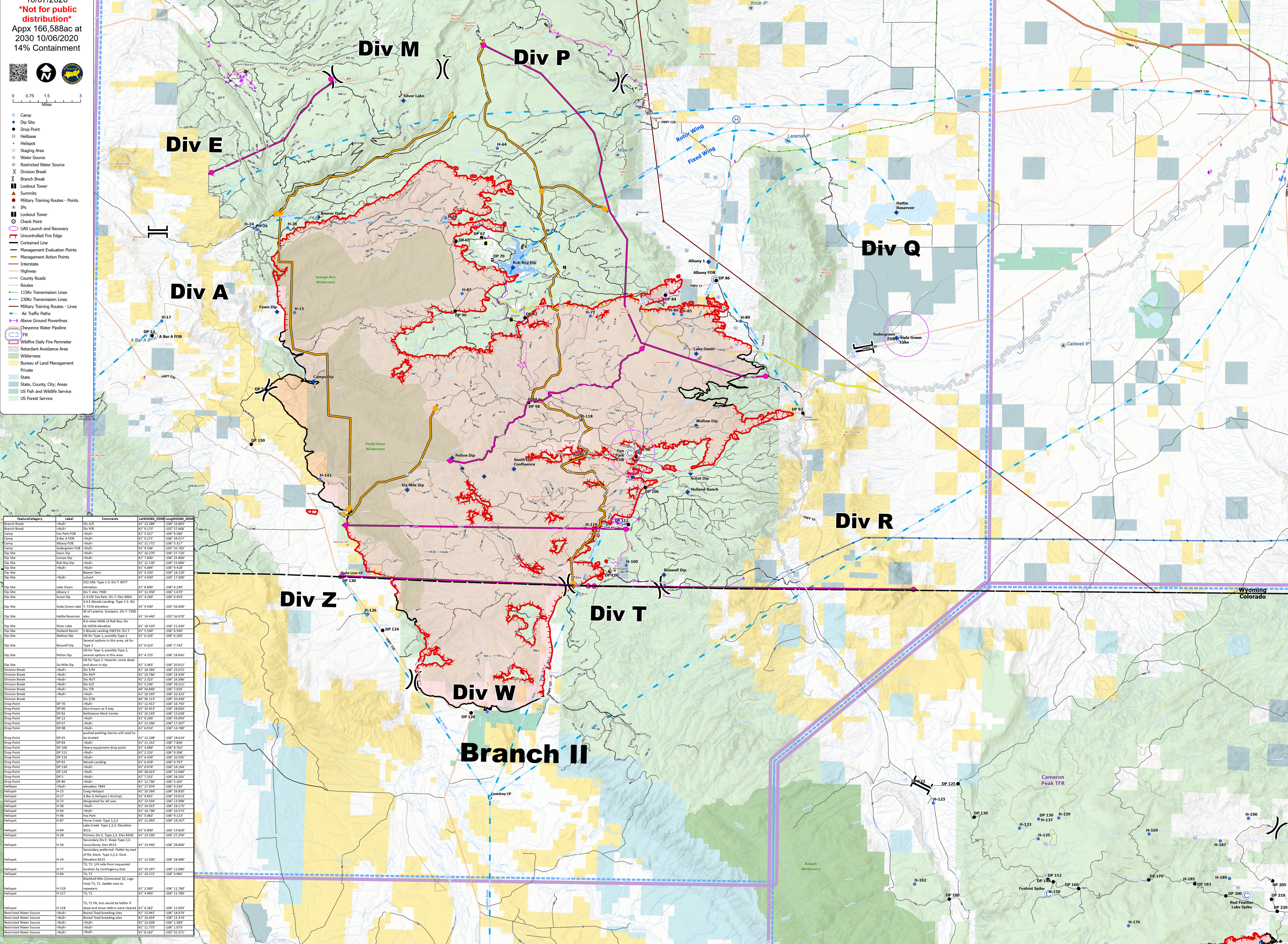


Air Operations
Mullen Fire
WY-MRF 200752
10/07/2020
Not for public distribution
Appx 166,588ac at
2030 10/06/2020
14% Containment



- Camp
- Dip Site
- Drop Point
- Helibase
- Helipod
- Staging Area
- Water Source
- Restricted Water Source
- ⌘ Division Break
- ⌘ Branch Break
- ⌘ Lookout Tower
- Summits
- Military Training Routes - Points
- IPs
- Lookout Tower
- Check Point
- US Launch and Recovery
- Uncontrolled Fire Edge
- Contained Line
- Management Evaluation Points
- Management Action Points
- Interstate
- Highway
- County Roads
- Routes
- 115kV Transmission Lines
- 230kV Transmission Lines
- Military Training Routes - Lines
- Air Traffic Paths
- Above Ground Powerlines
- Cheyenne Water Pipeline
- TFR
- Wildlife Daily Fire Perimeter
- Retardant Avoidance Area
- Wilderness
- Bureau of Land Management
- Private
- State
- State, County, City, Areas
- US Fish and Wildlife Service
- US Forest Service

Branch I



FeatureCategory	Label	Comments	LatWGS84_DDM	LongWGS84_DDM
Branch Break	<Null>	Div A/E	41° 13.289'	-106° 13.893'
Branch Break	<Null>	Div F/H	41° 13.172'	-106° 19.768'
Camp	Iron Park FOB	<Null>	41° 5.013'	-106° 9.580'
Camp	A Bar A FOB	<Null>	41° 9.271'	-106° 34.017'
Camp	Albany FOB	<Null>	41° 11.722'	-106° 13.312'
Camp	Sodergreen FOB	<Null>	41° 9.340'	-106° 55.782'
Dip Site	Fawn Dip	<Null>	41° 10.270'	-106° 27.720'
Dip Site	Camper Dip	<Null>	41° 7.660'	-106° 15.800'
Dip Site	Rob Roy Dip	<Null>	41° 11.130'	-106° 15.680'
Dip Site	<Null>	<Null>	41° 18.840'	-106° 49.418'
Dip Site	<Null>	<Null>	41° 4.320'	-106° 18.120'
Dip Site	<Null>	<Null>	41° 4.030'	-106° 17.000'
Dip Site	Lake Owen	353.580 Type 1-3, Div E, 9077 elevation.	41° 8.890'	-106° 6.240'
Dip Site	Albany 1	Div E elev 7900	41° 12.450'	-106° 5.670'
Dip Site	Scout Dip	12.650 Four Forks Div E Elev 8963	41° 2.260'	-106° 14.500'
Dip Site	Soda Green Lake	1.6 E Woods Landing Type 1-3, Div E, 7376 elevation.	41° 9.590'	-106° 56.000'
Dip Site	Hattie Reservoir	W of Lewis Successors, Div E, 3300 elev.	41° 14.440'	-106° 56.070'
Dip Site	Silver Lake	8.0 miles NW of Rob Roy Dip, 84,020.6 elevation.	41° 18.520'	-106° 21.420'
Dip Site	Holland Ranch	5 Woods Landing HWY10, Div E	41° 3.540'	-106° 6.590'
Dip Site	Wallow Dip	On for Type 1, possibly Type 2	41° 6.100'	-106° 6.200'
Dip Site	Boswell Dip	On for Type 3, possibly Type 2, several options in this area.	41° 0.323'	-106° 7.742'
Dip Site	Pelton Dip	On for Type 2, Hazards: some dead and down in dip.	41° 4.720'	-106° 18.640'
Dip Site	Six Mile Dip	<Null>	41° 3.460'	-106° 30.915'
Division Break	<Null>	Div E/M	41° 19.393'	-106° 25.072'
Division Break	<Null>	Div M/P	41° 19.766'	-106° 14.839'
Division Break	<Null>	Div W/I	41° 1.312'	-106° 18.500'
Division Break	<Null>	Div A/Z	41° 5.246'	-106° 29.211'
Division Break	<Null>	Div Z/W	40° 59.840'	-106° 7.920'
Division Break	<Null>	<Null>	41° 3.313'	-106° 10.133'
Division Break	<Null>	<Null>	40° 56.113'	-106° 20.446'
Drop Point	DP 70	<Null>	41° 12.411'	-106° 18.749'
Drop Point	DP 90	Also known as 4 way	41° 10.413'	-106° 18.603'
Drop Point	DP 82	Keithstone Work Center	41° 10.193'	-106° 15.028'
Drop Point	DP 22	<Null>	41° 9.269'	-106° 16.099'
Drop Point	DP 67	<Null>	41° 13.286'	-106° 17.307'
Drop Point	DP 88	<Null>	41° 6.914'	-106° 14.780'
Drop Point	DP 65	potential parking, berms will need to be leveled	41° 13.108'	-106° 18.614'
Drop Point	DP 84	<Null>	41° 11.141'	-106° 7.850'
Drop Point	DP 106	heavy equipment drop point	41° 1.668'	-106° 17.762'
Drop Point	DP 111	<Null>	41° 2.253'	-106° 9.590'
Drop Point	DP 116	<Null>	41° 0.499'	-106° 10.300'
Drop Point	DP 92	Woods Landing	41° 6.430'	-106° 7.741'
Drop Point	DP 130	<Null>	41° 0.074'	-106° 24.164'
Drop Point	DP 124	<Null>	40° 58.031'	-106° 22.080'
Drop Point	DP 7	<Null>	41° 7.251'	-106° 28.201'
Drop Point	DP 86	<Null>	41° 11.736'	-106° 5.265'
Drop Point	DP 127	<Null>	41° 17.978'	-106° 13.338'
Helipod	H15	Craig Helipod	41° 10.240'	-106° 58.820'
Helipod	H17	A Bar A Helipod (Aviation)	41° 9.841'	-106° 13.613'
Helipod	H13	designated for all uses	41° 13.438'	-106° 17.998'
Helipod	H58	<Null>	41° 14.015'	-106° 19.175'
Helipod	H64	<Null>	41° 6.738'	-106° 15.573'
Helipod	H48	Four Forks	41° 9.269'	-106° 16.113'
Helipod	H87	Horse Creek Type 1,2,3	41° 11.093'	-106° 18.287'
Helipod	H94	Lake Creek Type 1,2,3, Elevation 8515	41° 6.900'	-106° 14.820'
Helipod	H28	Primary Div E, Type 2,3, Elev 8430	41° 13.540'	-106° 27.250'
Helipod	H26	Secondary Div E, Slope Type 2,3, Cow/Dams, Elev 8515	41° 13.440'	-106° 28.800'
Helipod	H24	Secondary preferred. Flatter by east of Rd block, Type 1,2,3, Dust. Elevation 8155	41° 13.500'	-106° 28.980'
Helipod	H77	T3, T2, 1/4 mile from requested location by Contingency East	41° 10.297'	-106° 11.680'
Helipod	H89	T3, T2	41° 10.172'	-106° 9.985'
Helipod	H119	Backhaul Mt (Command 10, Logs haul) T3, T2, saddle next to repeaters	41° 2.083'	-106° 11.780'
Helipod	H117	T3, T2	41° 4.993'	-106° 11.780'
Helipod	H118	T3, T2 OK, but would be better if dead and down debris were cleared	41° 6.262'	-106° 12.093'
Restricted Water Source	<Null>	Boreal Road breeding sites	41° 1.941'	-106° 18.674'
Restricted Water Source	<Null>	Boreal Road breeding sites	41° 18.654'	-106° 13.374'
Restricted Water Source	<Null>	<Null>	41° 13.038'	-106° 1.389'
Restricted Water Source	<Null>	<Null>	41° 11.775'	-106° 10.071'
Restricted Water Source	<Null>	<Null>	41° 8.192'	-106° 52.371'

Wyoming
Colorado

Red Feather Lake Spike