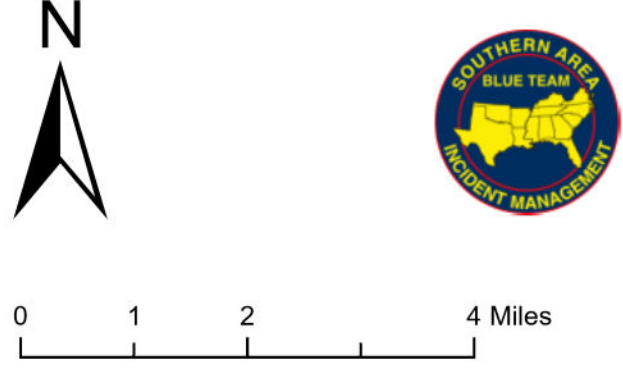


Planning

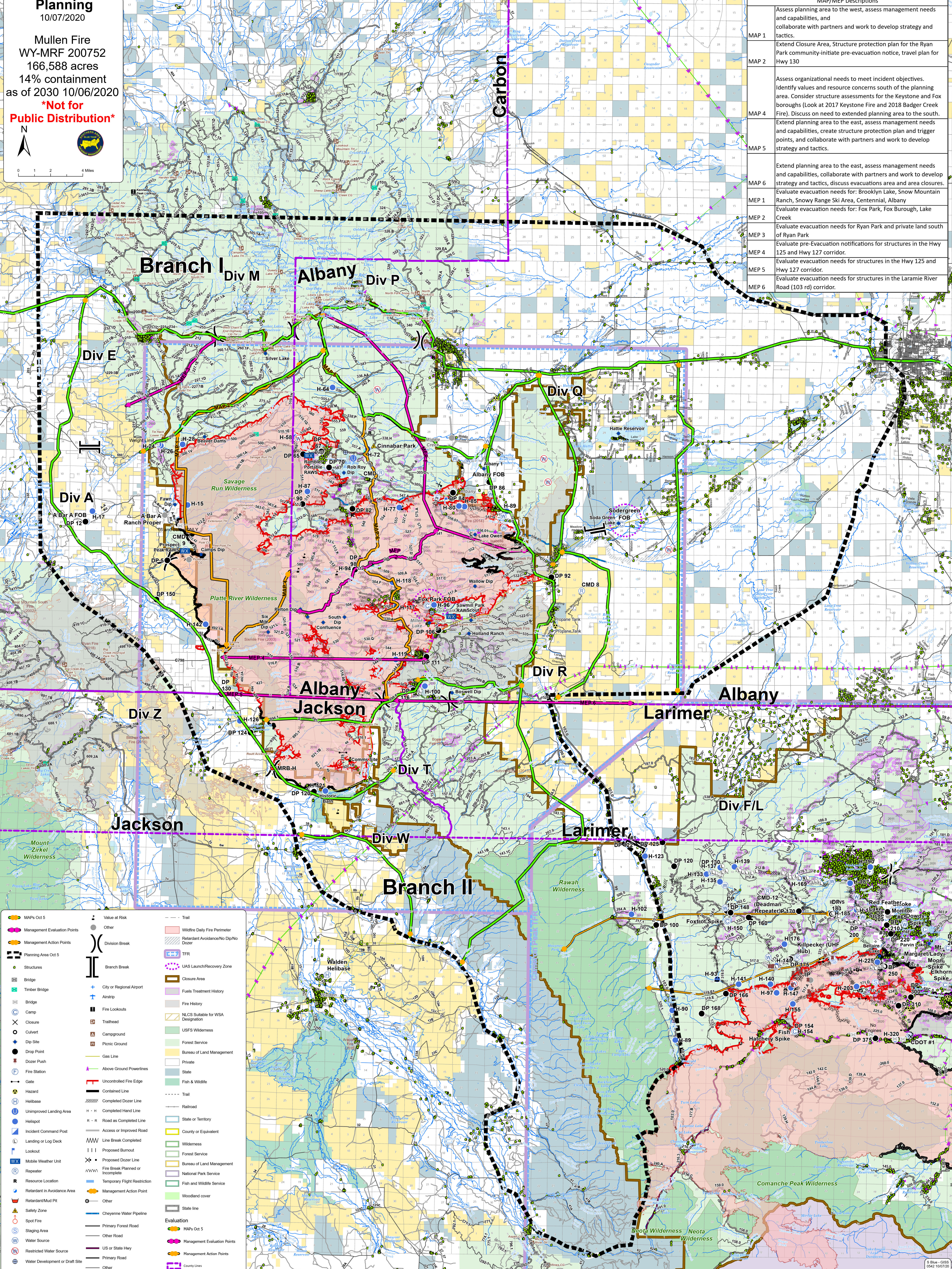
10/07/2020

Mullen Fire
WY-MRF 200752
166,588 acres
14% containment
as of 2030 10/06/2020

***Not for
Public Distribution***



MAP/MEP Descriptions	
MAP 1	Assess planning area to the west, assess management needs and capabilities, and collaborate with partners and work to develop strategy and tactics.
MAP 2	Extend Closure Area, Structure protection plan for the Ryan Park community-initiate pre-evacuation notice, travel plan for Hwy 130
MAP 4	Assess organizational needs to meet incident objectives. Identify values and resource concerns south of the planning area. Consider structure assessments for the Keystone and Fox boroughs (Look at 2017 Keystone Fire and 2018 Badger Creek Fire). Discuss on need to extended planning area to the south.
MAP 5	Extend planning area to the east, assess management needs and capabilities, create structure protection plan and trigger points, and collaborate with partners and work to develop strategy and tactics.
MAP 6	Extend planning area to the east, assess management needs and capabilities, collaborate with partners and work to develop strategy and tactics, discuss evacuations area and area closures.
MEP 1	Evaluate evacuation needs for: Brooklyn Lake, Snow Mountain Ranch, Snowy Range Ski Area, Centennial, Albany
MEP 2	Evaluate evacuation needs for: Fox Park, Fox Borough, Lake Creek
MEP 3	Evaluate evacuation needs for Ryan Park and private land south of Ryan Park
MEP 4	Evaluate pre-Evacuation notifications for structures in the Hwy 125 and Hwy 127 corridor.
MEP 5	Evaluate evacuation needs for structures in the Hwy 125 and Hwy 127 corridor.
MEP 6	Evaluate evacuation needs for structures in the Laramie River Road (103 rd) corridor.



<ul style="list-style-type: none">MAPs Oct 5Management Evaluation PointsManagement Action PointsPlanning Area Oct 5StructuresBridgeTimber BridgeCampClosureCulvertDip SiteDrop PointDozer PushFire StationGateHazardIncident Command PostLanding or Log DeckLookoutMobile Weather UnitRepeaterResource LocationRetardant in Avoidance AreaRetardant/Mud PitSafety ZoneSpot FireStaging AreaWater SourceRestricted Water SourceWater Development or Draft Site	<ul style="list-style-type: none">Value at RiskOtherDivision BreakBranch BreakTrailWildfire Daily Fire PerimeterRetardant Avoidance/No Dip/No DozerTFRUS Launch/Recovery ZoneClosure AreaFuels Treatment HistoryFire HistoryNLCS Suitable for WSA DesignationUSFS WildernessForest ServiceBureau of Land ManagementStateFish & WildlifeCompleted Dozer LineCompleted Hand LineRoad as Completed LineAccess or Improved RoadLine Break CompletedProposed BurnoutProposed Dozer LineFire Break Planned or IncompleteTemporary Flight RestrictionManagement Action PointOtherCheyenne Water PipelinePrimary Forest RoadOther RoadUS or State HwyPrimary RoadOther	<ul style="list-style-type: none">TrailWildfire Daily Fire PerimeterRetardant Avoidance/No Dip/No DozerTFRUS Launch/Recovery ZoneClosure AreaFuels Treatment HistoryFire HistoryNLCS Suitable for WSA DesignationUSFS WildernessForest ServiceBureau of Land ManagementStateFish & WildlifeCompleted Dozer LineCompleted Hand LineRoad as Completed LineAccess or Improved RoadLine Break CompletedProposed BurnoutProposed Dozer LineFire Break Planned or IncompleteTemporary Flight RestrictionManagement Action PointOtherCheyenne Water PipelinePrimary Forest RoadOther RoadUS or State HwyPrimary RoadOther
--	--	--