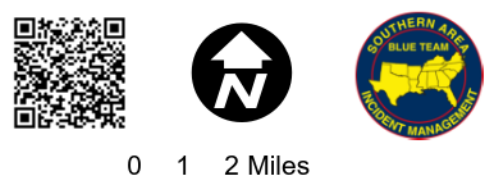
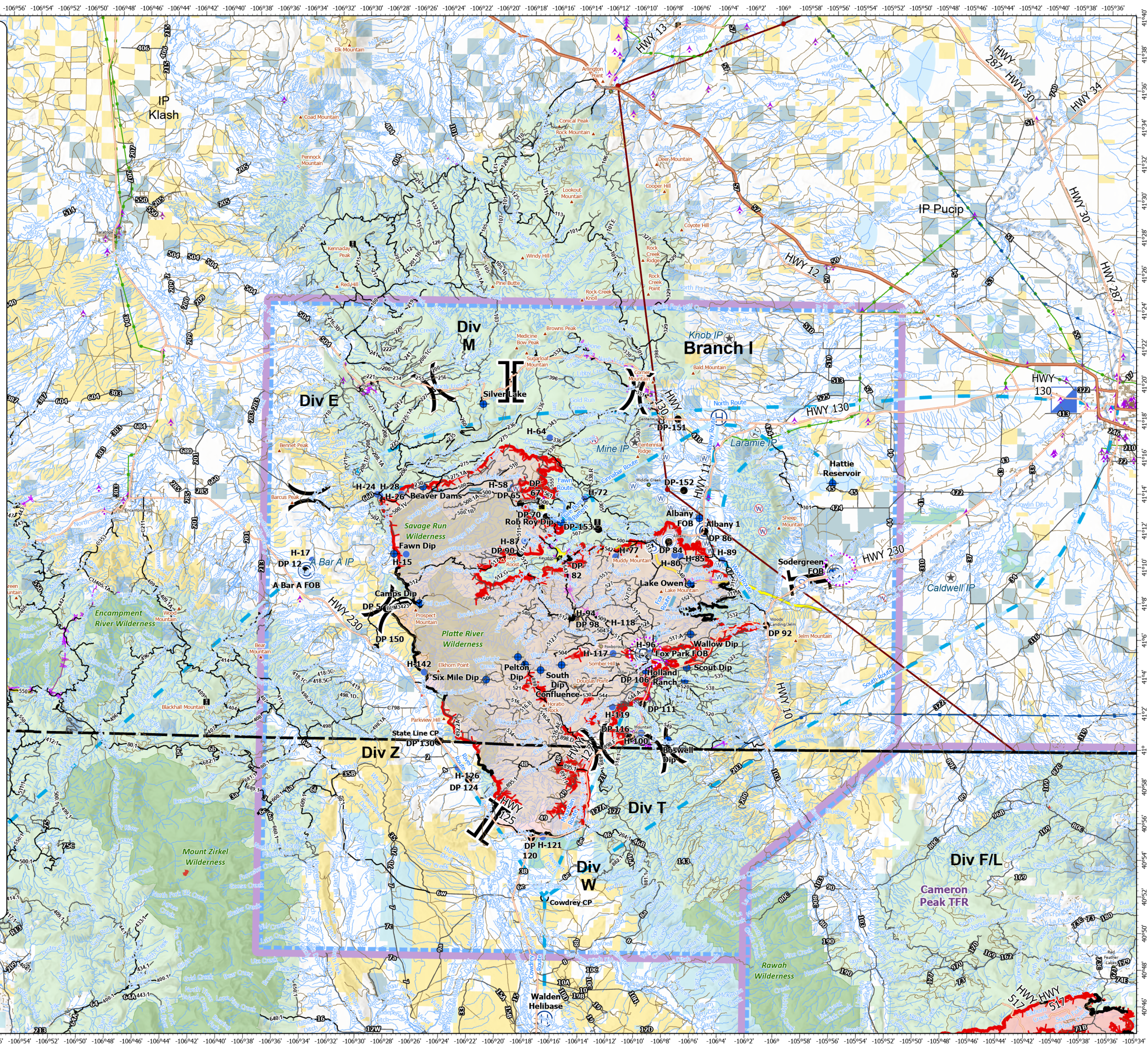


ATGS
WY-MRF 200752
 10/08/2020
 *Not for public
 distribution*
 Appx 170,996ac at
 0011 10/08/2020



0 1 2 Miles

- Camp
 - Dip Site
 - Drop Point
 - Helibase
 - Helispot
 - Incident Command Post
 - Staging Area
 - Water Source
 - Restricted Water Source
 - Division Break
 - Branch Break
 - Summits
 - Aerial Hazards
 - Structure Groupings
 - IPs
 - Check Point
 - Lookout Tower
 - Uncontrolled Fire Edge
 - Contained Line
 - Water
 - UAS Launch and Recovery
 - Air Traffic Paths
 - Observation Towers
 - Lookout Tower
 - Military Training Routes - Points
 - 115Kv Transmission Lines
 - 230Kv Transmission Lines
 - Military Training Routes - Lines
 - Above Ground Powerlines
 - Cheyenne Water Pipeline
 - TFR
 - Wildfire Daily Fire Perimeter
 - Retardant Avoidance Area
 - State Boundary
 - Wilderness
 - Bureau of Land Management
 - Private
 - State
 - State, County, City; Areas
 - US Fish and Wildlife Service
 - US Forest Service
 - Interstate
 - Highway
 - County Roads
 - Routes
- Existing System Roads by Operational Maintenance Level**
- Primary Forest Road
 - Other Road
 - Label Point
 - World Hillshade



S Blue GIS
 10/08/20 @ 0708
 NAD83 UTM 13N