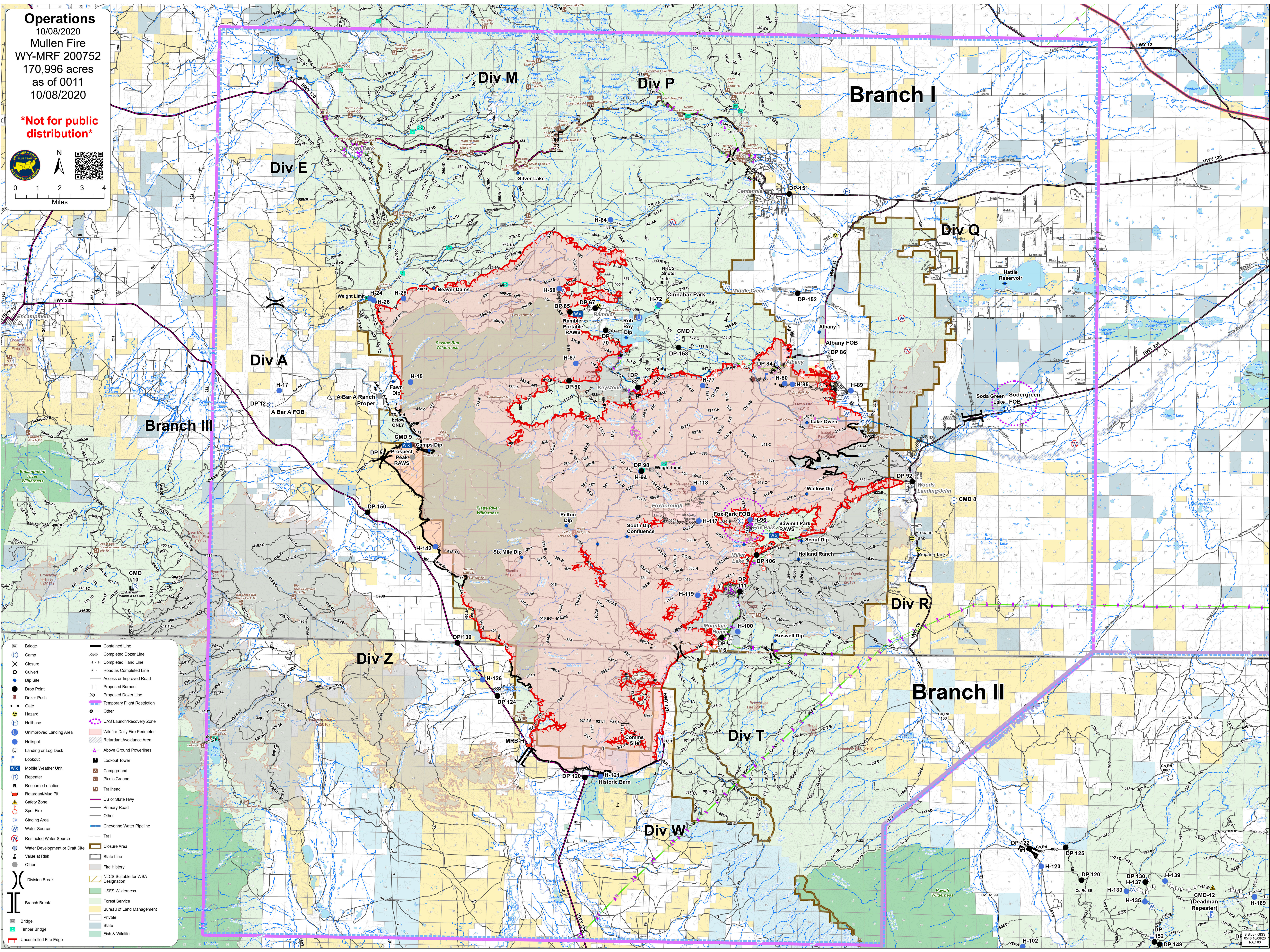
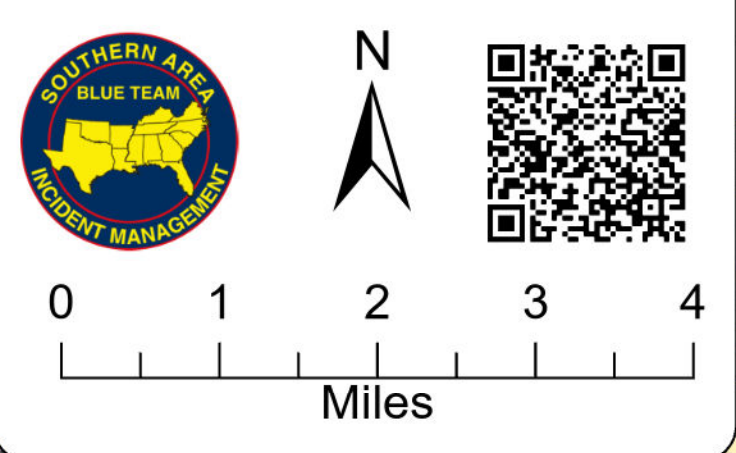


Operations
 10/08/2020
 Mullen Fire
 WY-MRF 200752
 170,996 acres
 as of 0011
 10/08/2020

Not for public distribution



- | | | | |
|--|---------------------------------|--|-----------------------------------|
| | Bridge | | Contained Line |
| | Camp | | Completed Dozer Line |
| | Closure | | Completed Hand Line |
| | Culvert | | Road as Completed Line |
| | Dip Site | | Access or Improved Road |
| | Drop Point | | Proposed Burnout |
| | Dozer Push | | Proposed Dozer Line |
| | Gate | | Temporary Flight Restriction |
| | Hazard | | Other |
| | Helibase | | UAS Launch/Recovery Zone |
| | Unimproved Landing Area | | Wildfire Daily Fire Perimeter |
| | Helispot | | Retardant Avoidance Area |
| | Landing or Log Deck | | Above Ground Powerlines |
| | Lockout | | Lookout Tower |
| | Mobile Weather Unit | | Campground |
| | Repeater | | Picnic Ground |
| | Resource Location | | Trailhead |
| | Retardant/Mud Pit | | US or State Hwy |
| | Safety Zone | | Primary Road |
| | Spot Fire | | Other |
| | Staging Area | | Cheyenne Water Pipeline |
| | Water Source | | Trail |
| | Restricted Water Source | | Closure Area |
| | Water Development or Draft Site | | State Line |
| | Value at Risk | | Fire History |
| | Other | | NLCS Suitable for WSA Designation |
| | Division Break | | USFS Wilderness |
| | Branch Break | | Forest Service |
| | Bridge | | Bureau of Land Management |
| | Timber Bridge | | Private |
| | Uncontrolled Fire Edge | | State |
| | | | Fish & Wildlife |

Scale: 1:50,000
 NAD 83