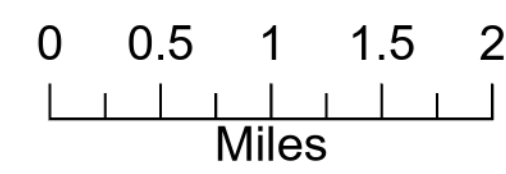


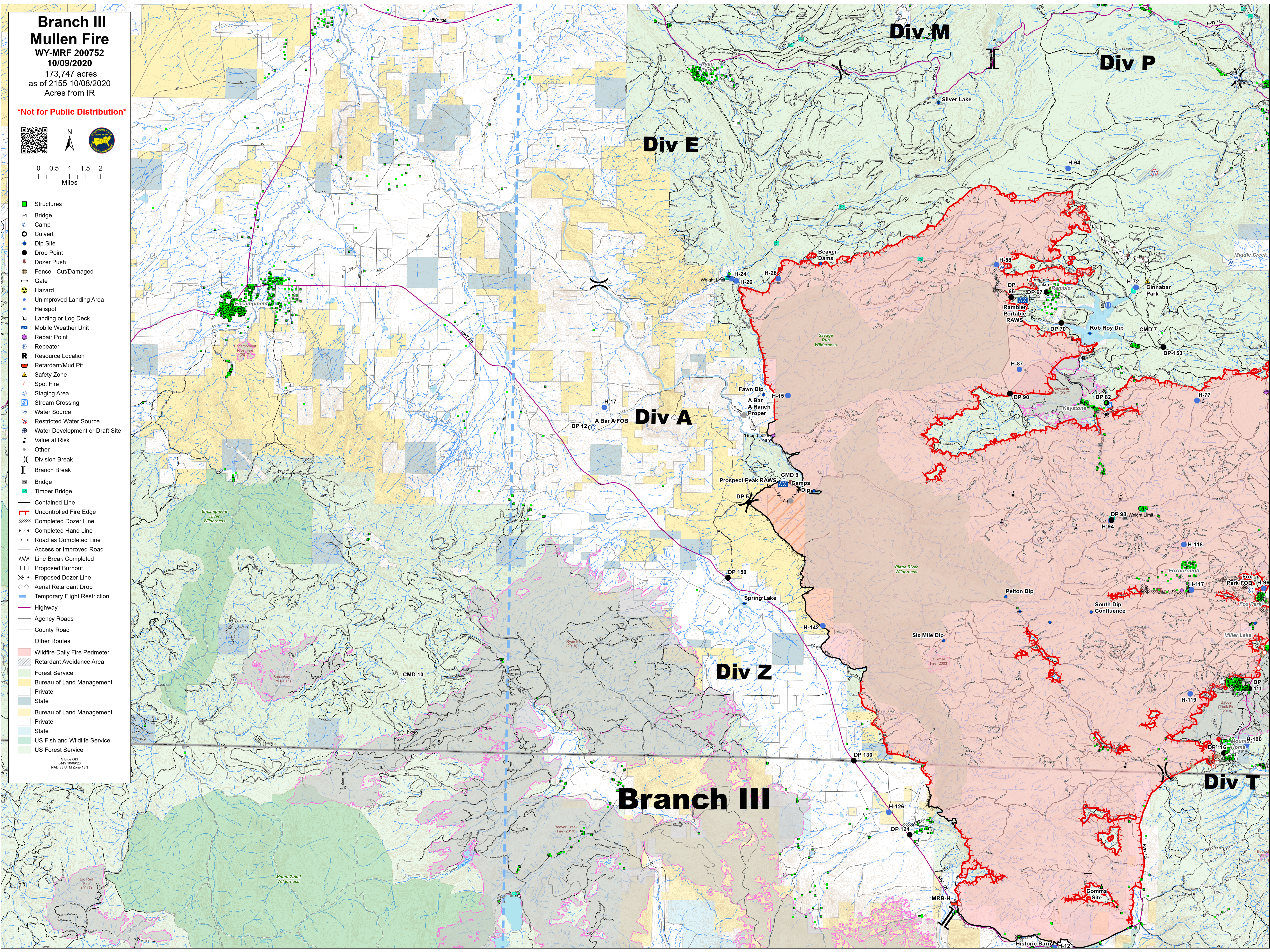
**Branch III  
Mullen Fire**  
WY-MRF 200752  
10/09/2020  
173,747 acres  
as of 2155 10/08/2020  
Acres from IR

**\*Not for Public Distribution\***



- Structures
- Bridge
- Camp
- Culvert
- Dip Site
- Drop Point
- Dozer Push
- Fence - Cut/Damaged
- Gate
- Hazard
- Unimproved Landing Area
- Helispot
- Landing or Log Deck
- Mobile Weather Unit
- Repair Point
- Repeater
- Resource Location
- Retardant/Mud Pit
- Safety Zone
- Spot Fire
- Staging Area
- Stream Crossing
- Water Source
- Restricted Water Source
- Water Development or Draft Site
- Value at Risk
- Other
- Division Break
- Branch Break
- Bridge
- Timber Bridge
- Contained Line
- Uncontrolled Fire Edge
- Completed Dozer Line
- Completed Hand Line
- Road as Completed Line
- Access or Improved Road
- Line Break Completed
- Proposed Burnout
- Proposed Dozer Line
- Aerial Retardant Drop
- Temporary Flight Restriction
- Highway
- Agency Roads
- County Road
- Other Routes
- Wildfire Daily Fire Perimeter
- Retardant Avoidance Area
- Forest Service
- Bureau of Land Management
- Private
- State
- Bureau of Land Management
- Private
- State
- US Fish and Wildlife Service
- US Forest Service

© Blue GIS  
0449 10/09/20  
NAD 83 UTM Zone 13N



**Branch III**