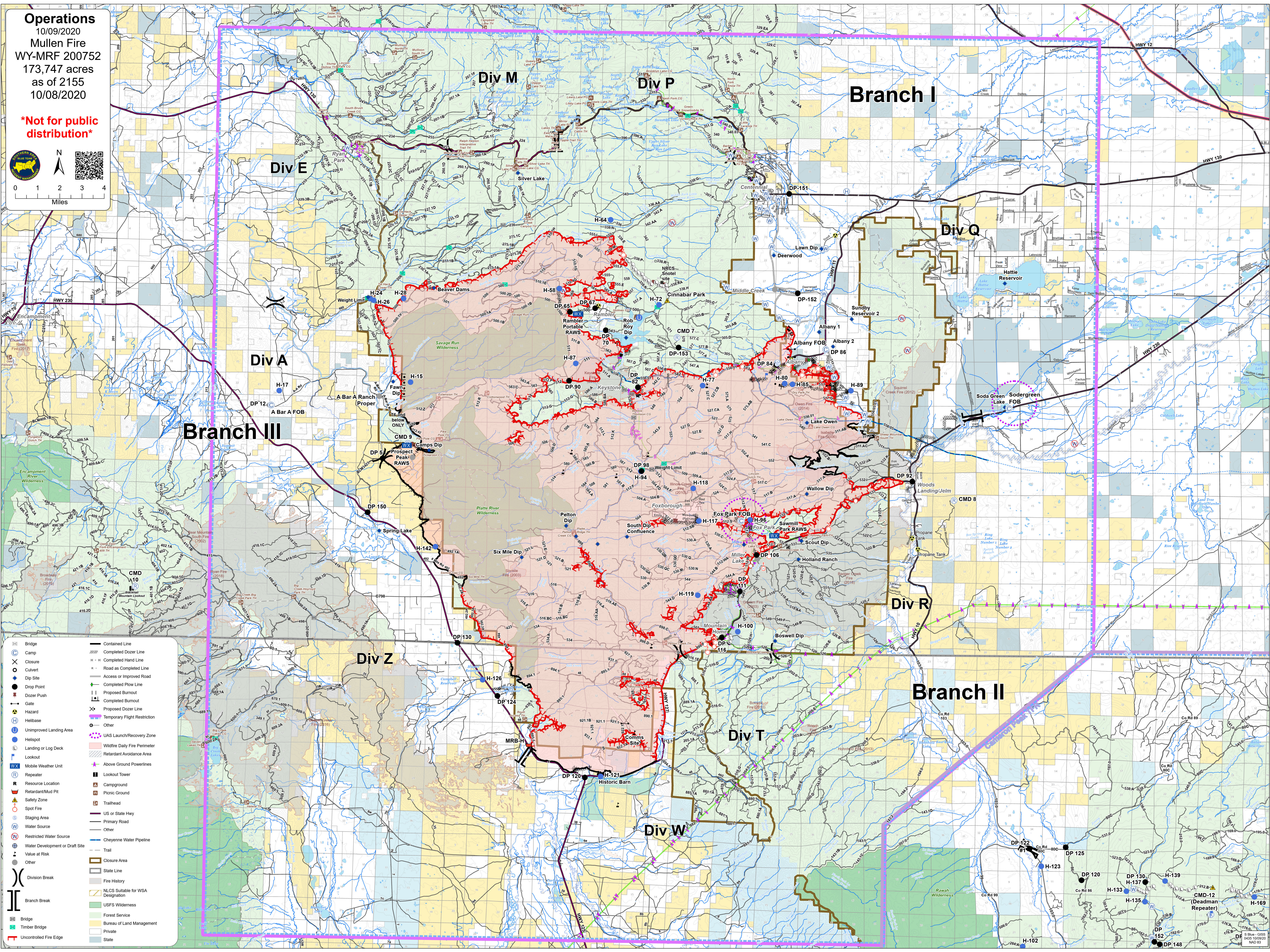
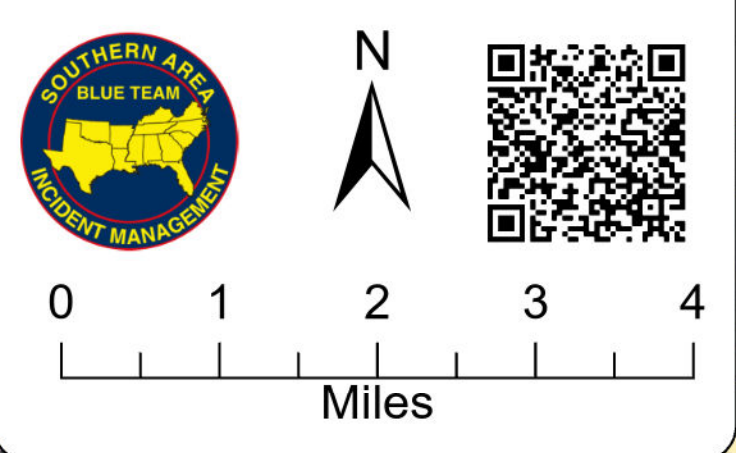


**Operations**  
 10/09/2020  
 Mullen Fire  
 WY-MRF 200752  
 173,747 acres  
 as of 2155  
 10/08/2020

**\*Not for public distribution\***



- |  |                                     |
|--|-------------------------------------|
|  | — Contained Line                    |
|  | XXXXX Completed Dozer Line          |
|  | H - H Completed Hand Line           |
|  | R - R Road as Completed Line        |
|  | — Access or Improved Road           |
|  | — Completed Plow Line               |
|  | — Proposed Burnout                  |
|  | — Proposed Dozer Line               |
|  | — Temporary Flight Restriction      |
|  | — Other                             |
|  | — UAS Launch/Recovery Zone          |
|  | — Wildfire Daily Fire Perimeter     |
|  | — Retardant Avoidance Area          |
|  | — Above Ground Powerlines           |
|  | — Lookout Tower                     |
|  | — Campground                        |
|  | — Picnic Ground                     |
|  | — Safety Zone                       |
|  | — Trailhead                         |
|  | — US or State Hwy                   |
|  | — Primary Road                      |
|  | — Other                             |
|  | — Water Source                      |
|  | — Cheyenne Water Pipeline           |
|  | — Trail                             |
|  | — Closure Area                      |
|  | — State Line                        |
|  | — Fire History                      |
|  | — NLCS Suitable for WSA Designation |
|  | — USFS Wilderness                   |
|  | — Forest Service                    |
|  | — Bureau of Land Management         |
|  | — Private                           |
|  | — State                             |

Scale: 1" = 1 Mile  
 NAD 83