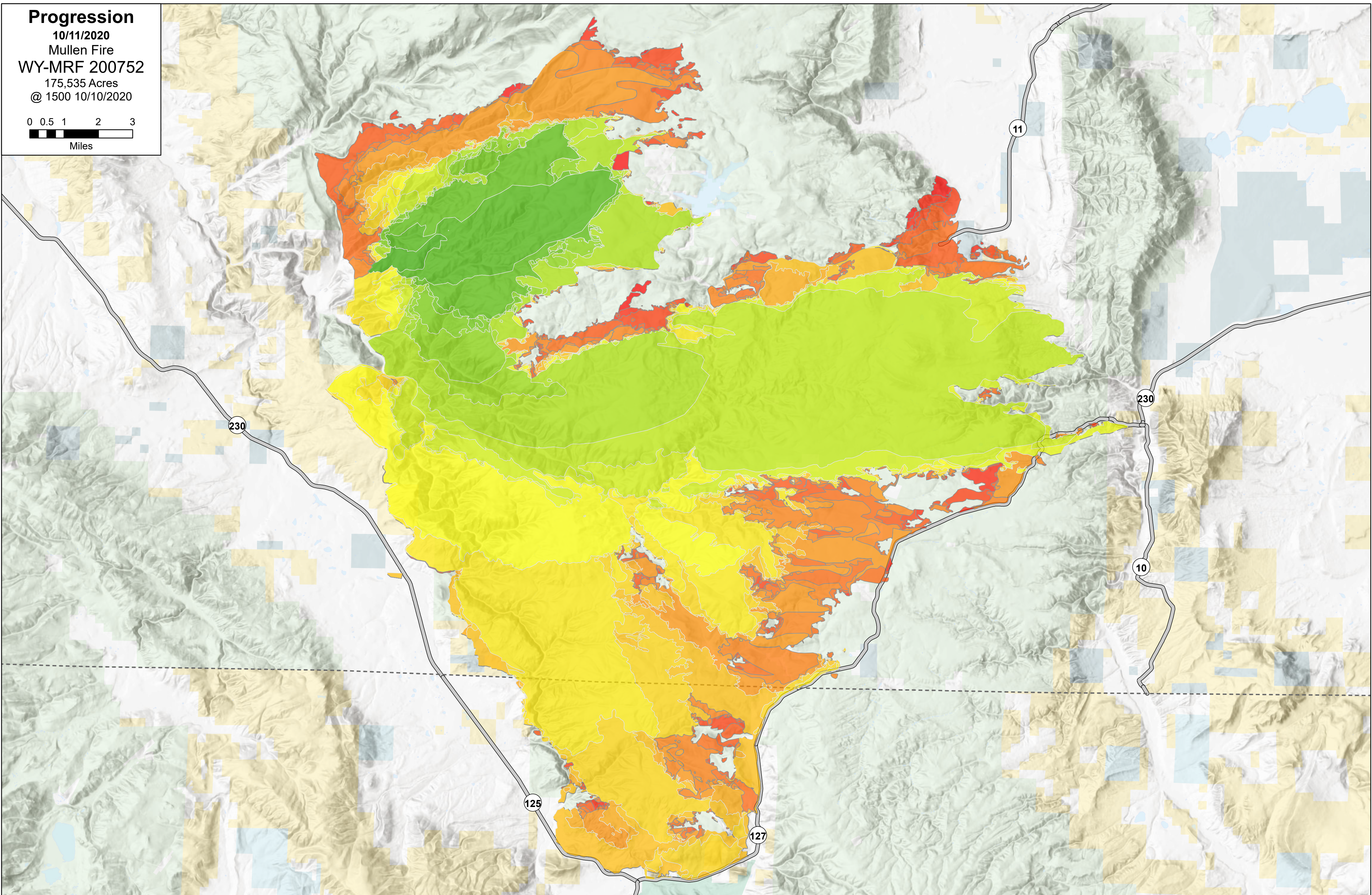
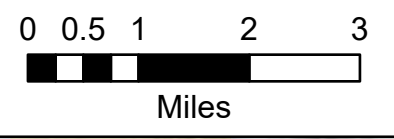


Progression
 10/11/2020
 Mullen Fire
 WY-MRF 200752
 175,535 Acres
 @ 1500 10/10/2020



9/18/2020 - 644 growth acres, 644 total acres	9/23/2020 - 3,110 growth acres, 17,763 total acres	9/28/2020 - 2,329 growth acres, 80,279 total acres	10/3/2020 - 3,300 growth acres, 140,140 total acres*	10/8/2020 - 2,695 growth acres, 173,480 total acres
9/19/2020 - 6,736 growth acres, 7,382 total acres	9/24/2020 - 1,763 growth acres, 19,526 total acres	9/29/2020 - 16,478 growth acres, 96,757 total acres*	10/4/2020 - 11,571 growth acres, 151,711 total acres	10/9/2020 - 1,132 growth acres, 174,612 total acres
9/20/2020 - 5,381 growth acres, 12,763 total acres	9/25/2020 - 16,284 growth acres, 35,810 total acres	9/30/2020 - 20,483 growth acres, 117,240 total acres*	10/5/2020 - 9,524 growth acres, 161,069 total acres	10/10/2020 - 601 growth acres, 175,213 total acres
9/21/2020 - 746 growth acres, 13,509 total acres	9/26/2020 - 33,328 growth acres, 69,138 total acres	10/1/2020 - 10,263 growth acres, 127,503 total acres*	10/6/2020 - 5,418 growth acres, 166,487 total acres	
9/22/2020 - 1,144 growth acres, 14,653 total acres	9/27/2020 - 8,767 growth acres, 77,950 total acres	10/2/2020 - 9,337 growth acres, 136,840 total acres*	10/7/2020 - 4,298 growth acres, 170,785 total acres	



S Blue - GIS
 10/11/2020
 NAD 83