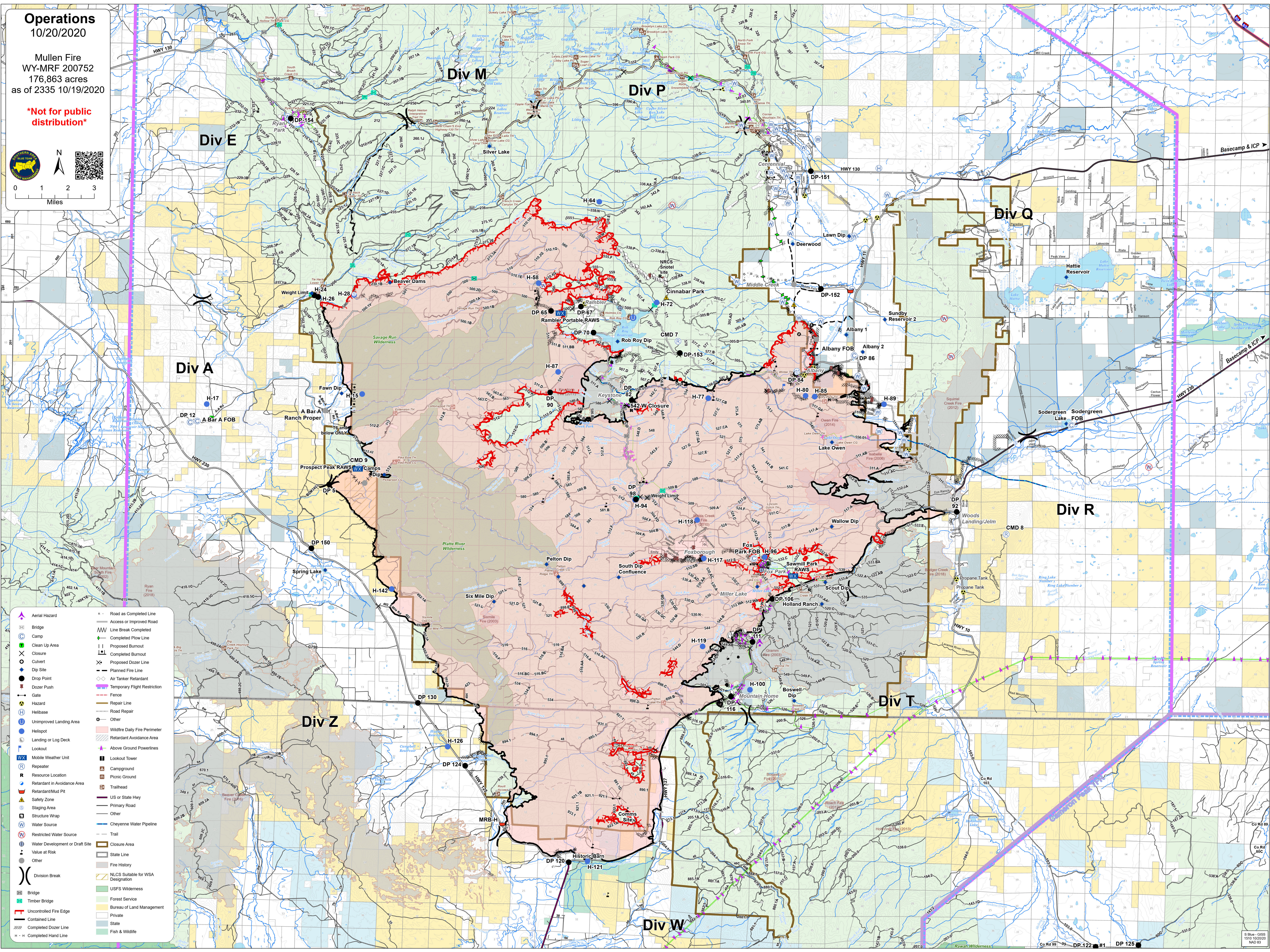
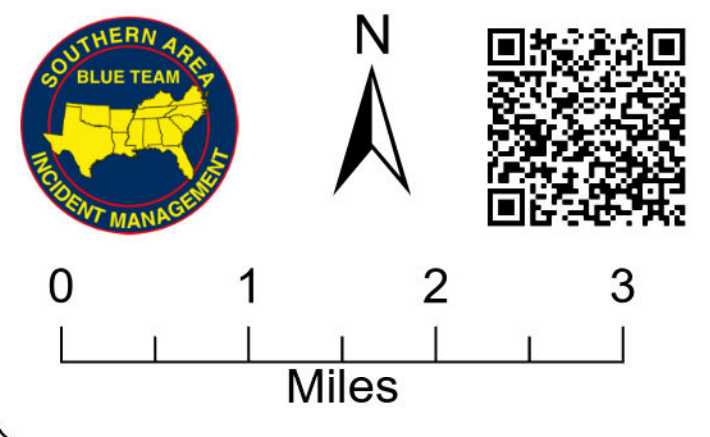


**Operations**  
10/20/2020

Mullen Fire  
WY-MRF 200752  
176,863 acres  
as of 2335 10/19/2020

**\*Not for public  
distribution\***



- Aerial Hazard
- Bridge
- Camp
- Clean Up Area
- Closure
- Culvert
- Dip Site
- Drop Point
- Dozer Push
- Gate
- Hazard
- Helibase
- Unimproved Landing Area
- Helispot
- Landing or Log Deck
- Lookout
- Mobile Weather Unit
- Repeater
- Resource Location
- Retardant in Avoidance Area
- Retardant/Mud Pit
- Safety Zone
- Staging Area
- Structure Wrap
- Water Source
- Restricted Water Source
- Water Development or Draft Site
- Value at Risk
- Other
- Division Break
- Bridge
- Timber Bridge
- Uncontrolled Fire Edge
- Contained Line
- Completed Dozer Line
- Completed Hand Line
- Road as Completed Line
- Access or Improved Road
- Line Break Completed
- Completed Plow Line
- Proposed Burnout
- Completed Burnout
- Proposed Dozer Line
- Planned Fire Line
- Air Tanker Retardant
- Temporary Flight Restriction
- Fence
- Repair Line
- Road Repair
- Other
- Wildfire Daily Fire Perimeter
- Retardant Avoidance Area
- Above Ground Powerlines
- Lookout Tower
- Campground
- Picnic Ground
- Trailhead
- US or State Hwy
- Primary Road
- Other
- Cheyenne Water Pipeline
- Trail
- Closure Area
- State Line
- Fire History
- NLCS Suitable for WSA Designation
- USFS Wilderness
- Forest Service
- Bureau of Land Management
- Private
- State
- Fish & Wildlife