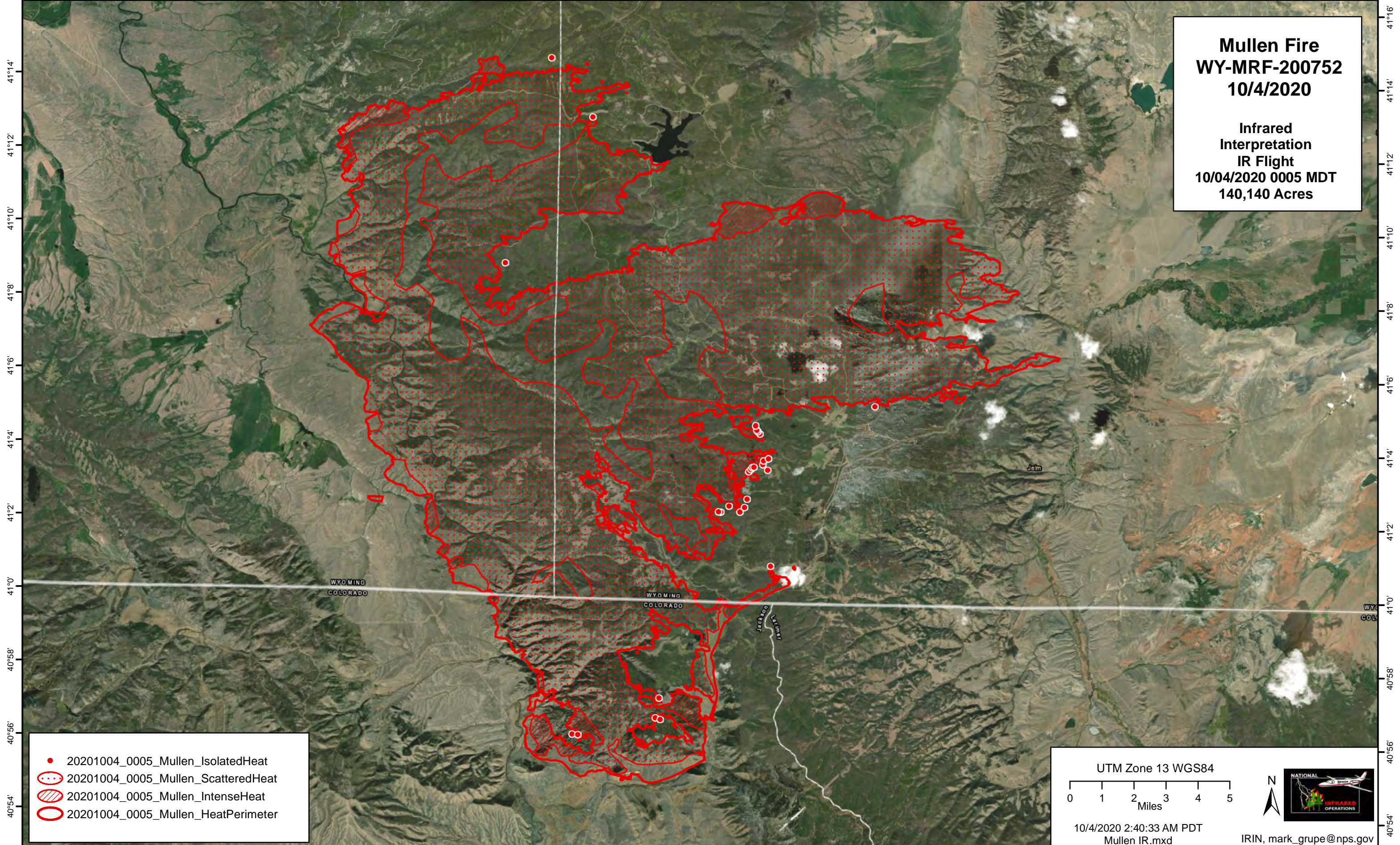


-106°38' -106°36' -106°34' -106°32' -106°30' -106°28' -106°26' -106°24' -106°22' -106°20' -106°18' -106°16' -106°14' -106°12' -106°10' -106°8' -106°6' -106°4' -106°2' -106°0' -105°58' -105°56' -105°54' -105°52' -105°50'

**Mullen Fire**  
**WY-MRF-200752**  
**10/4/2020**

**Infrared**  
**Interpretation**  
**IR Flight**  
**10/04/2020 0005 MDT**  
**140,140 Acres**



- 20201004\_0005\_Mullen\_IsolatedHeat
- 20201004\_0005\_Mullen\_ScatteredHeat
- ▨ 20201004\_0005\_Mullen\_IntenseHeat
- 20201004\_0005\_Mullen\_HeatPerimeter

UTM Zone 13 WGS84

0 1 2 3 4 5 Miles

10/4/2020 2:40:33 AM PDT  
Mullen IR.mxd

IRIN, mark\_grupe@nps.gov

-106°38' -106°36' -106°34' -106°32' -106°30' -106°28' -106°26' -106°24' -106°22' -106°20' -106°18' -106°16' -106°14' -106°12' -106°10' -106°8' -106°6' -106°4' -106°2' -106°0' -105°58' -105°56' -105°54' -105°52' -105°50'