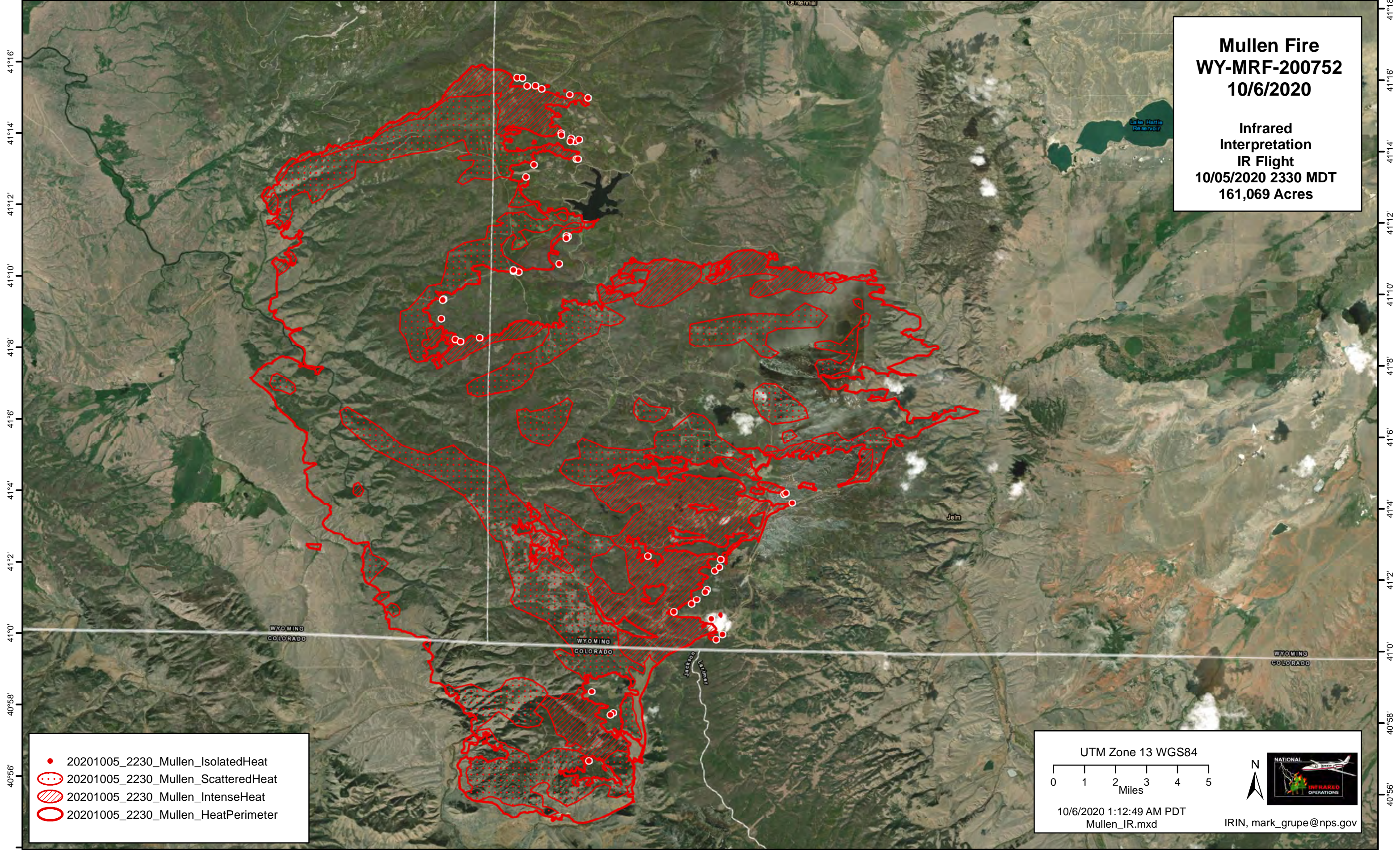


-106°36' -106°34' -106°32' -106°30' -106°28' -106°26' -106°24' -106°22' -106°20' -106°18' -106°16' -106°14' -106°12' -106°10' -106°8' -106°6' -106°4' -106°2' -106°0' -105°58' -105°56' -105°54' -105°52' -105°50' -105°48'

**Mullen Fire**  
**WY-MRF-200752**  
**10/6/2020**

**Infrared**  
**Interpretation**  
**IR Flight**  
**10/05/2020 2330 MDT**  
**161,069 Acres**



- 20201005\_2230\_Mullen\_IsolatedHeat
- 20201005\_2230\_Mullen\_ScatteredHeat
- ▨ 20201005\_2230\_Mullen\_IntenseHeat
- 20201005\_2230\_Mullen\_HeatPerimeter

UTM Zone 13 WGS84

0 1 2 3 4 5  
Miles

10/6/2020 1:12:49 AM PDT  
Mullen\_IR.mxd

NATIONAL INFRARED OPERATIONS

IRIN, mark\_grupe@nps.gov

-106°36' -106°34' -106°32' -106°30' -106°28' -106°26' -106°24' -106°22' -106°20' -106°18' -106°16' -106°14' -106°12' -106°10' -106°8' -106°6' -106°4' -106°2' -106°0' -105°58' -105°56' -105°54' -105°52' -105°50' -105°48'