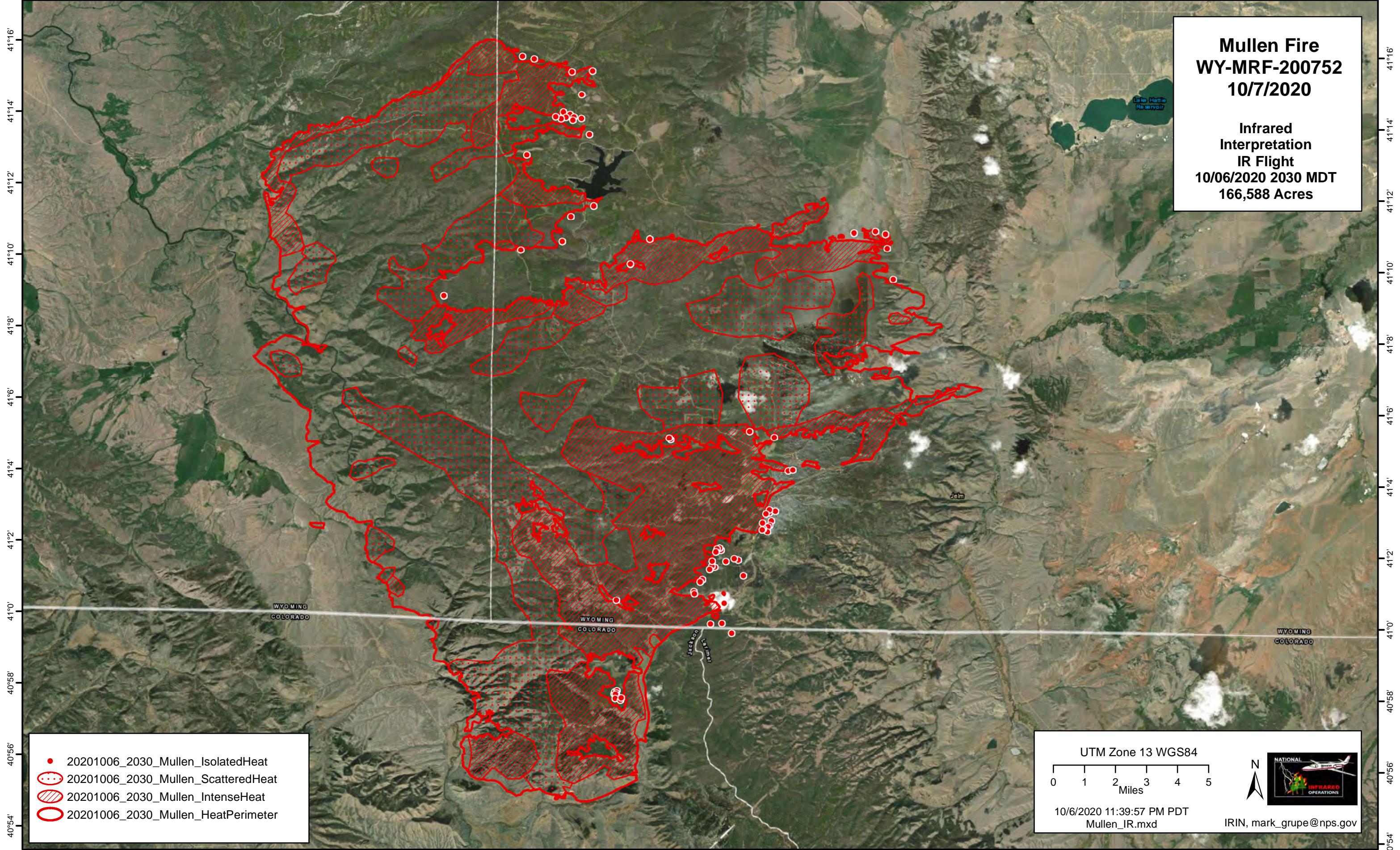


-106°36' -106°34' -106°32' -106°30' -106°28' -106°26' -106°24' -106°22' -106°20' -106°18' -106°16' -106°14' -106°12' -106°10' -106°8' -106°6' -106°4' -106°2' -106°0' -105°58' -105°56' -105°54' -105°52' -105°50' -105°48'

Mullen Fire
WY-MRF-200752
10/7/2020

Infrared
Interpretation
IR Flight
10/06/2020 2030 MDT
166,588 Acres



- 20201006_2030_Mullen_IsolatedHeat
- ⊙ 20201006_2030_Mullen_ScatteredHeat
- ▨ 20201006_2030_Mullen_IntenseHeat
- 20201006_2030_Mullen_HeatPerimeter

UTM Zone 13 WGS84

0 1 2 3 4 5
Miles

10/6/2020 11:39:57 PM PDT
Mullen_IR.mxd

NATIONAL INFRARED OPERATIONS

IRIN, mark_grupe@nps.gov

-106°36' -106°34' -106°32' -106°30' -106°28' -106°26' -106°24' -106°22' -106°20' -106°18' -106°16' -106°14' -106°12' -106°10' -106°8' -106°6' -106°4' -106°2' -106°0' -105°58' -105°56' -105°54' -105°52' -105°50' -105°48'