

Pilot Mullen Fire

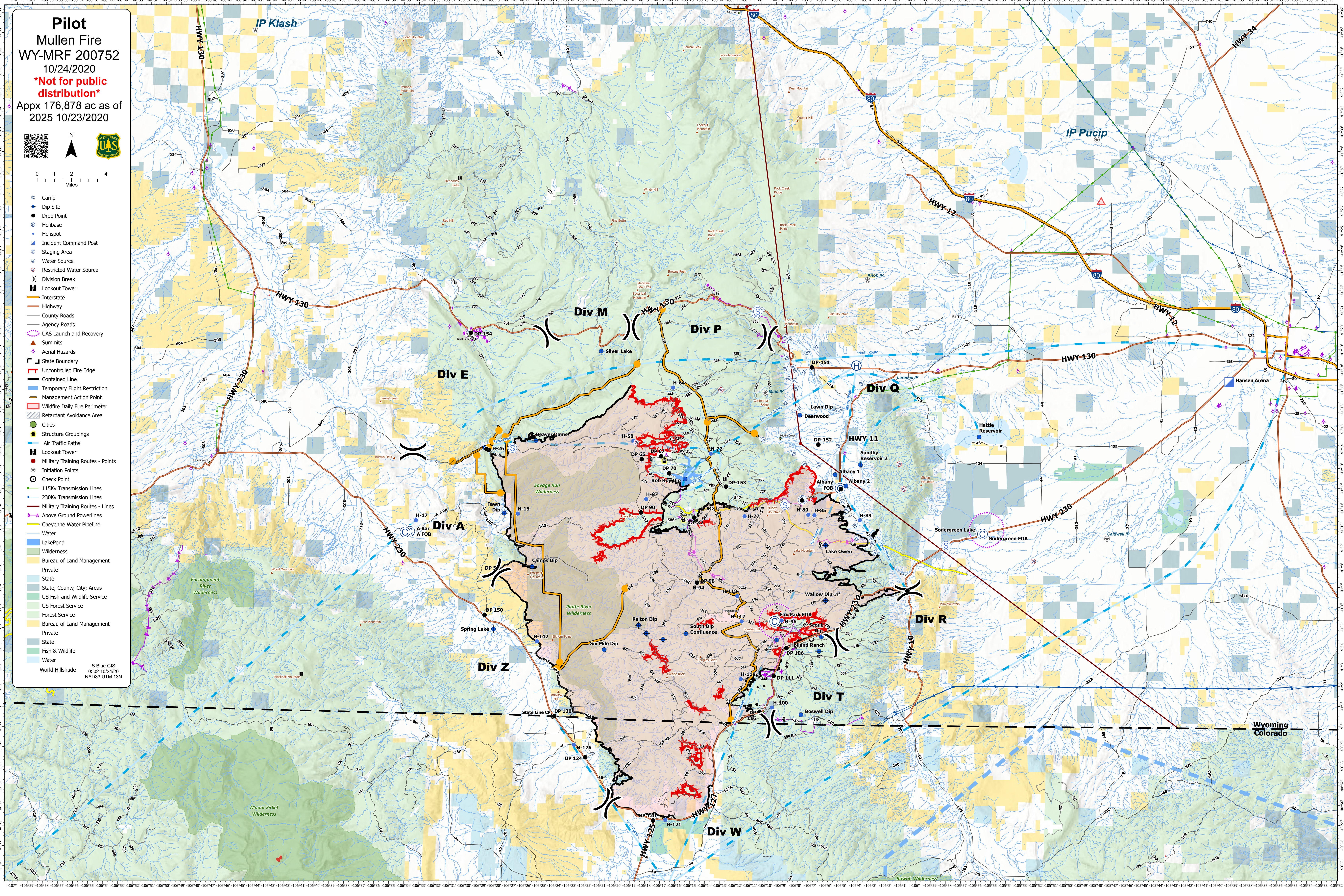
WY-MRF 200752
10/24/2020
Not for public distribution
Appx 176,878 ac as of 2025 10/23/2020



0 1 2 4 Miles

- Camp
- Dip Site
- Drop Point
- Helibase
- Helipod
- Incident Command Post
- Staging Area
- Water Source
- Restricted Water Source
- Division Break
- Lookout Tower
- Interstate
- Highway
- County Roads
- Agency Roads
- UAS Launch and Recovery
- Summits
- Aerial Hazards
- State Boundary
- Uncontrolled Fire Edge
- Contained Line
- Temporary Flight Restriction
- Management Action Point
- Wildfire Daily Fire Perimeter
- Retardant Avoidance Area
- Cities
- Structure Groupings
- Air Traffic Paths
- Lookout Tower
- Military Training Routes - Points
- Initiation Points
- Check Point
- 115Kv Transmission Lines
- 230Kv Transmission Lines
- Military Training Routes - Lines
- Above Ground Powerlines
- Cheyenne Water Pipeline
- Water
- Lake/Pond
- Wilderness
- Bureau of Land Management
- Private
- State
- State, County, City; Areas
- US Fish and Wildlife Service
- US Forest Service
- Forest Service
- Bureau of Land Management
- Private
- State
- Fish & Wildlife
- Water
- World Hillshade

S Blue GIS
0502 10/24/20
NAD83 UTM 13N



Wyoming
Colorado