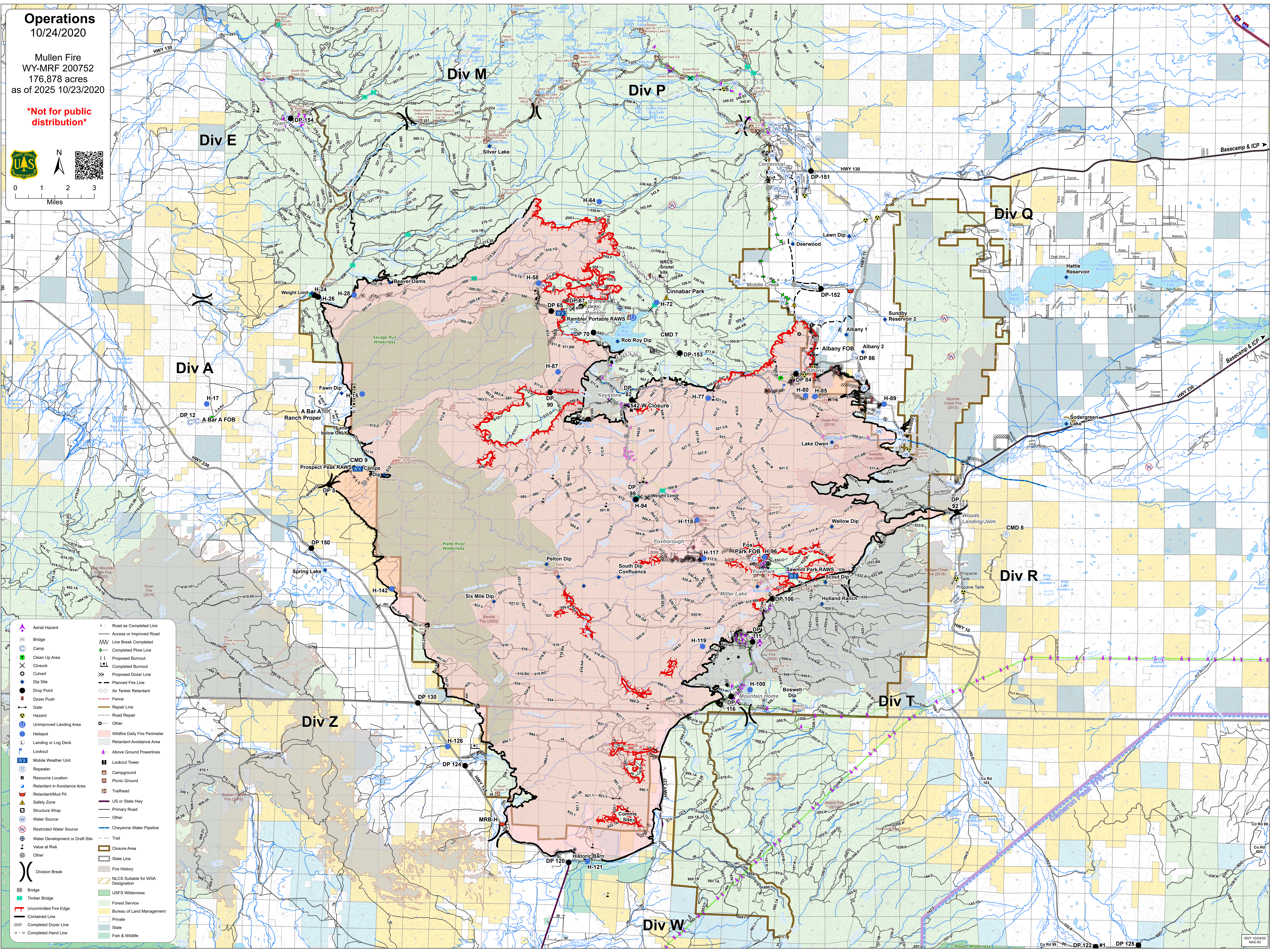
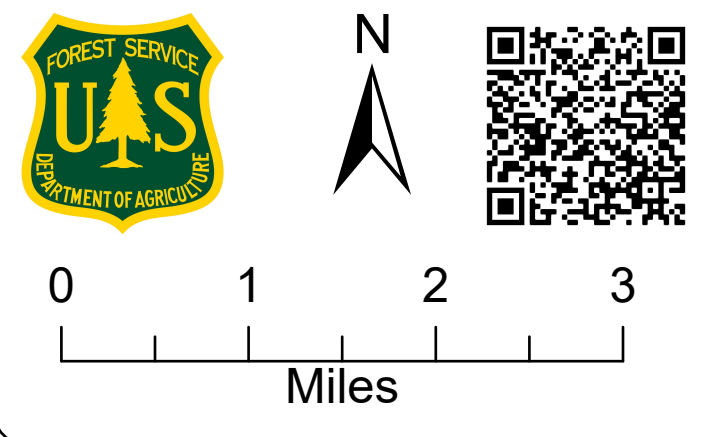


Operations
10/24/2020

Mullen Fire
WY-MRF 200752
176,878 acres
as of 2025 10/23/2020

***Not for public
distribution***



- Aerial Hazard
 - Bridge
 - Camp
 - Clean Up Area
 - Closure
 - Culvert
 - Dip Site
 - Drop Point
 - Dozer Push
 - Dozer Push
 - Gate
 - Hazard
 - Unimproved Landing Area
 - Hellspot
 - Landing or Log Deck
 - Lookout
 - Mobile Weather Unit
 - Repeater
 - Resource Location
 - Retardant in Avoidance Area
 - Retardant/Mud Pit
 - Safety Zone
 - Structure Wrap
 - Water Source
 - Restricted Water Source
 - Water Development or Draft Site
 - Value at Risk
 - Other
 - Division Break
 - Bridge
 - Timber Bridge
 - Uncontrolled Fire Edge
 - Contained Line
 - Completed Dozer Line
 - Completed Hand Line
- Road as Completed Line
 - Access or Improved Road
 - Line Break Completed
 - Completed Plow Line
 - Proposed Burnout
 - Completed Burnout
 - Proposed Dozer Line
 - Planned Fire Line
 - Air Tanker Retardant
 - Fence
 - Repair Line
 - Road Repair
 - Road Repair
 - Other
 - Wildfire Daily Fire Perimeter
 - Retardant Avoidance Area
 - Above Ground Powerlines
 - Lookout Tower
 - Campground
 - Picnic Ground
 - Trailhead
 - US or State Hwy
 - Primary Road
 - Other
 - Cheyenne Water Pipeline
 - Trail
 - Closure Area
 - State Line
 - Fire History
 - NLCS Suitable for WSA Designation
 - USFS Wilderness
 - Forest Service
 - Bureau of Land Management
 - Private
 - State
 - Fish & Wildlife