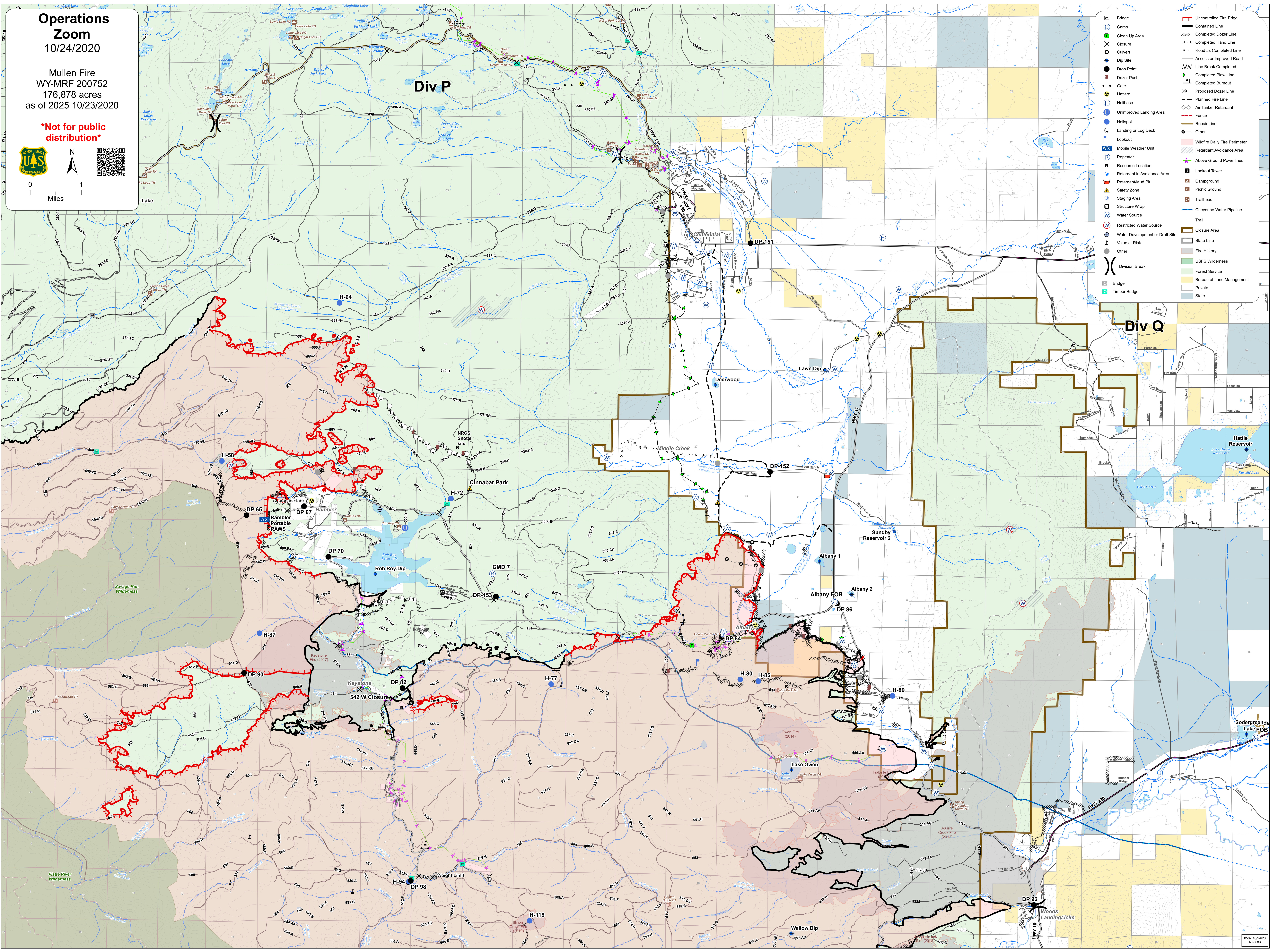
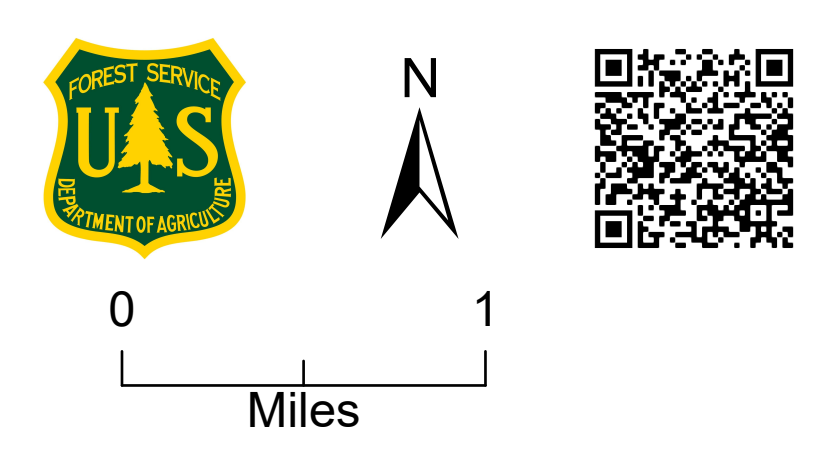


Operations Zoom

10/24/2020

Mullen Fire
WY-MRF 200752
176,878 acres
as of 2025 10/23/2020

Not for public distribution



- Bridge
- Camp
- Clean Up Area
- Closure
- Culvert
- Dip Site
- Drop Point
- Gate
- Hazard
- Helibase
- Unimproved Landing Area
- Helispot
- Landing or Log Deck
- Lookout
- Mobile Weather Unit
- Repeater
- Resource Location
- Retardant in Avoidance Area
- Retardant/Mud Pit
- Safety Zone
- Staging Area
- Structure Wrap
- Water Source
- Restricted Water Source
- Water Development or Draft Site
- Value at Risk
- Other
- Division Break
- Bridge
- Timber Bridge
- Uncontrolled Fire Edge
- Contained Line
- Completed Dozer Line
- Completed Hand Line
- Road as Completed Line
- Access or Improved Road
- Line Break Completed
- Completed Plow Line
- Completed Burnout
- Proposed Dozer Line
- Planned Fire Line
- Air Tanker Retardant
- Fence
- Repair Line
- Wildfire Daily Fire Perimeter
- Retardant Avoidance Area
- Above Ground Powerlines
- Lookout Tower
- Campground
- Picnic Ground
- Trailhead
- Cheyenne Water Pipeline
- Closure Area
- State Line
- Fire History
- USFS Wilderness
- Forest Service
- Bureau of Land Management
- Private
- State

Div P

Div Q

Cinnabar Park

Sundby Reservoir 2

542 W Closure

Lake Owen

Sodergraunde Lake FOB