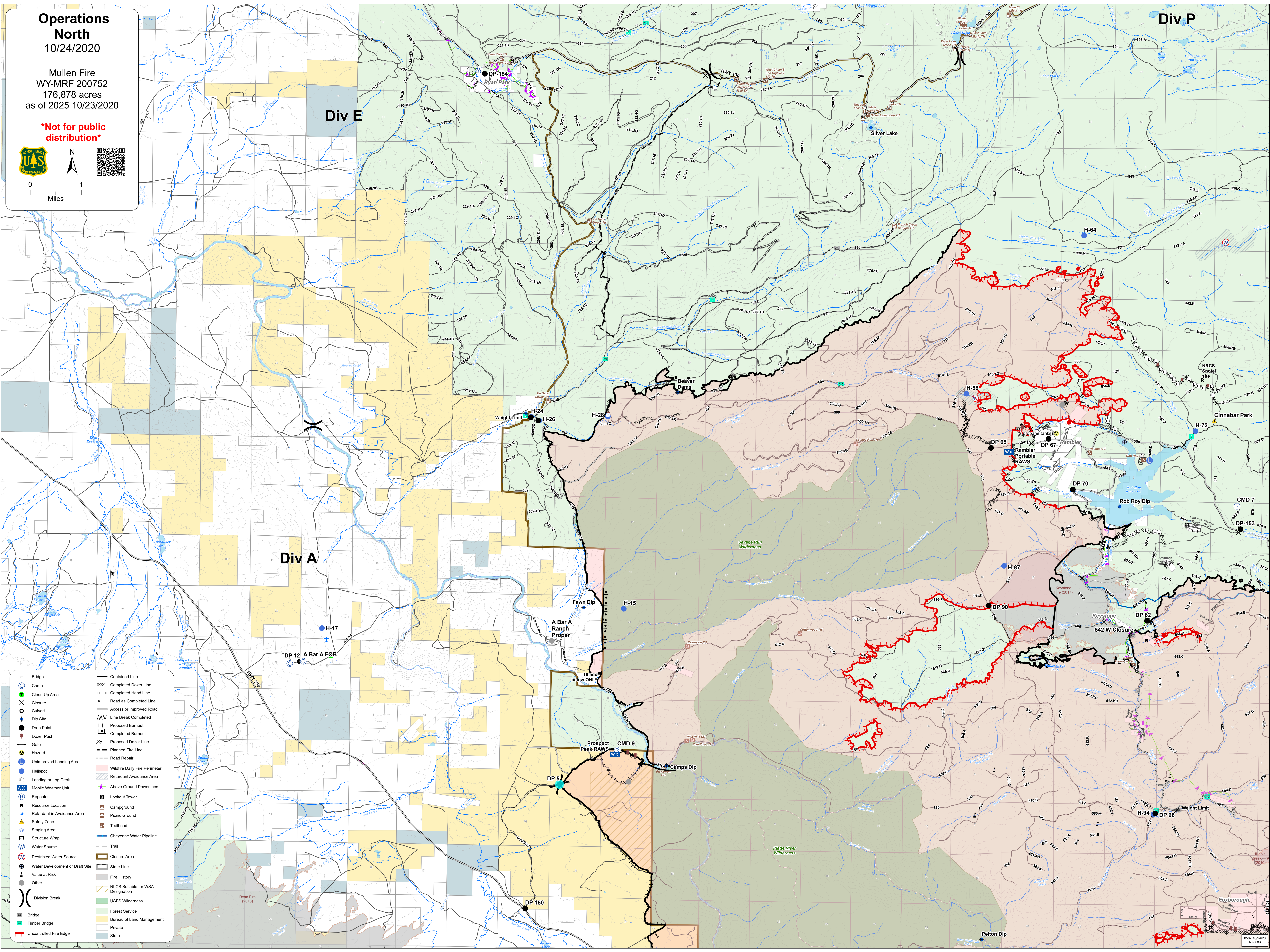
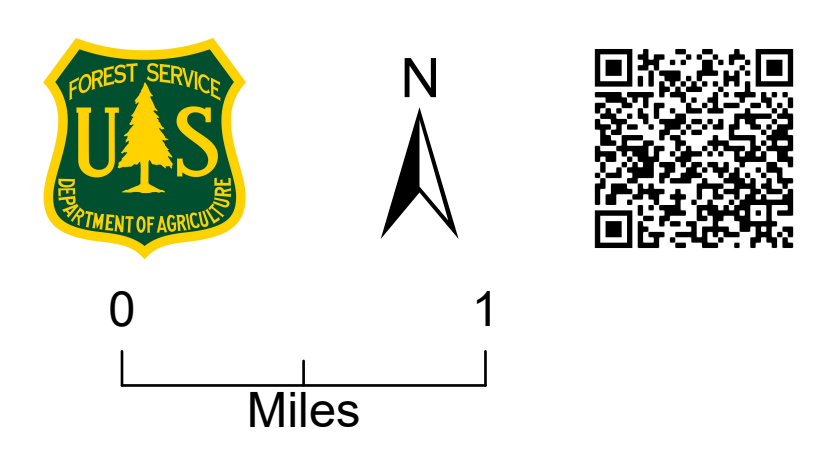


Operations North

10/24/2020

Mullen Fire
WY-MRF 200752
176,878 acres
as of 2025 10/23/2020

Not for public distribution



- | | | | |
|--|---------------------------------|--|-----------------------------------|
| | Bridge | | Completed Dozer Line |
| | Camp | | Completed Hand Line |
| | Clean Up Area | | Road as Completed Line |
| | Closure | | Access or Improved Road |
| | Culvert | | Line Break Completed |
| | Dip Site | | Proposed Burnout |
| | Drop Point | | Completed Burnout |
| | Dozer Push | | Proposed Dozer Line |
| | Gate | | Planned Fire Line |
| | Hazard | | Road Repair |
| | Unimproved Landing Area | | Wildfire Daily Fire Perimeter |
| | Helispot | | Retardant Avoidance Area |
| | Landing or Log Deck | | Above Ground Powerlines |
| | Mobile Weather Unit | | Lookout Tower |
| | Repeater | | Campground |
| | Resource Location | | Picnic Ground |
| | Retardant in Avoidance Area | | Trailhead |
| | Safety Zone | | Cheyenne Water Pipeline |
| | Staging Area | | Trail |
| | Structure Wrap | | Closure Area |
| | Water Source | | State Line |
| | Restricted Water Source | | Fire History |
| | Water Development or Draft Site | | NLCS Suitable for WSA Designation |
| | Value at Risk | | USFS Wilderness |
| | Other | | Forest Service |
| | Division Break | | Bureau of Land Management |
| | Bridge | | Private |
| | Timber Bridge | | State |
| | Uncontrolled Fire Edge | | |