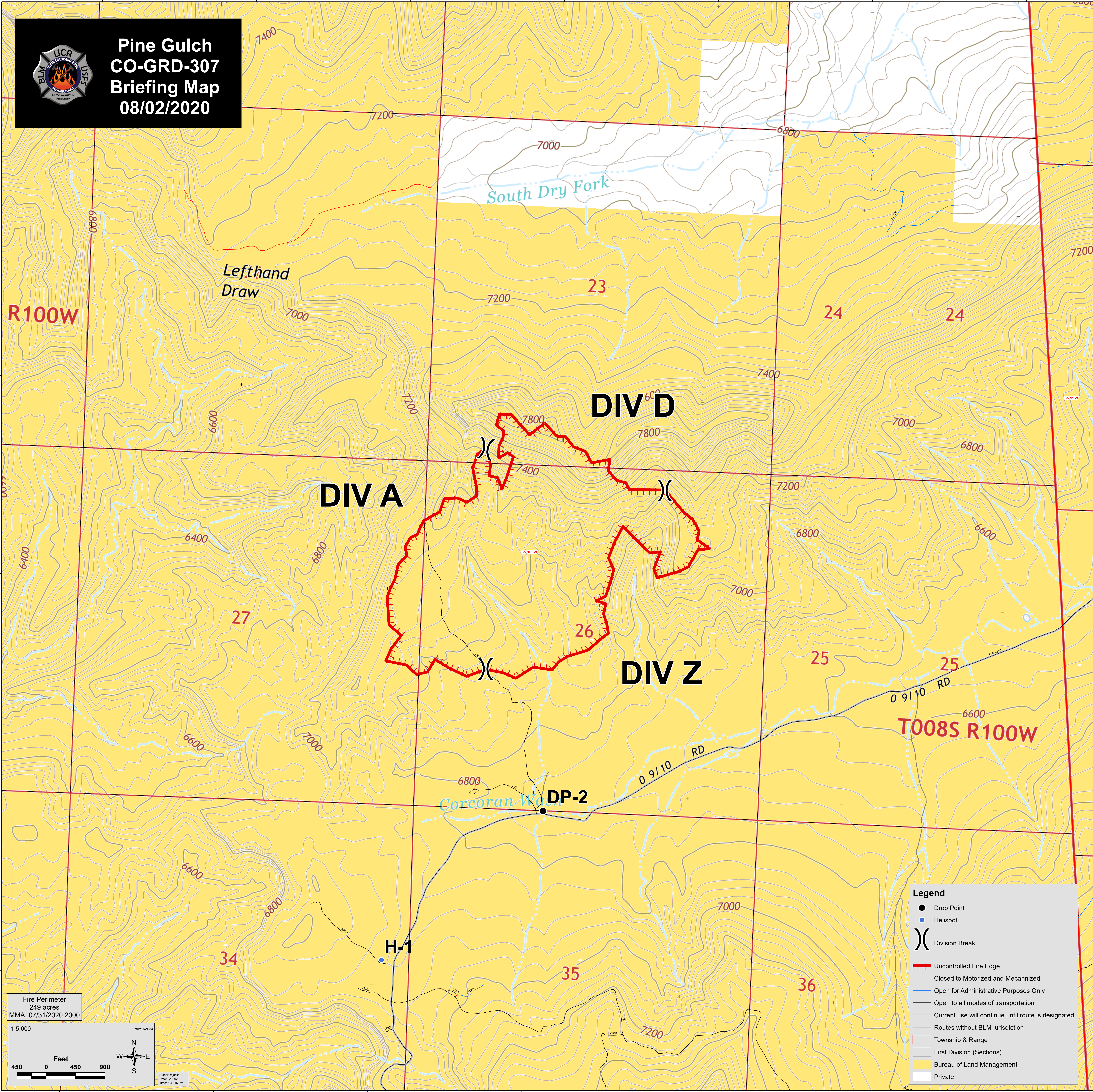
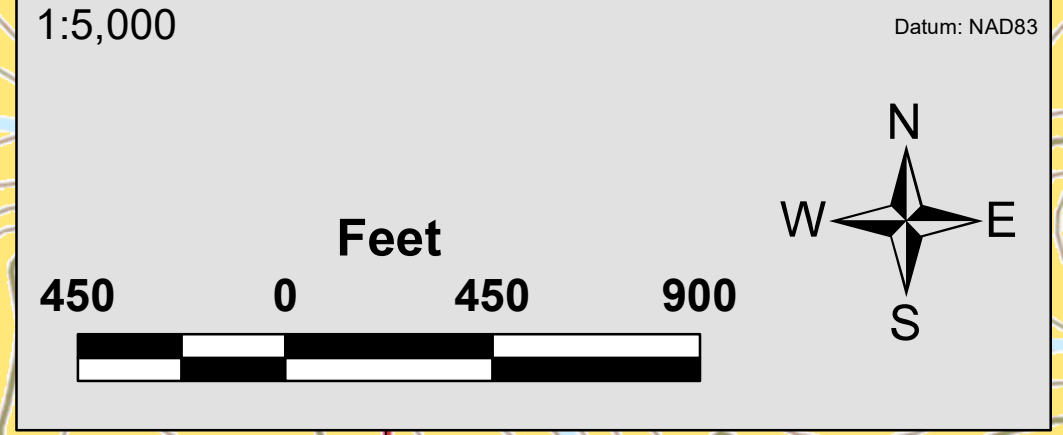




**Pine Gulch
CO-GRD-307
Briefing Map
08/02/2020**



Fire Perimeter
249 acres
MMA, 07/31/2020 2000



Author: rjacks
Date: 8/1/2020
Time: 6:40:18 PM

Legend

- Drop Point
- Helispot
-) (Division Break
- ▬ Uncontrolled Fire Edge
- ▬ Closed to Motorized and Mecahnized
- ▬ Open for Administrative Purposes Only
- ▬ Open to all modes of transportation
- ▬ Current use will continue until route is designated
- ▬ Routes without BLM jurisdiction
- ▭ Township & Range
- ▭ First Division (Sections)
- ▭ Bureau of Land Management
- ▭ Private