

Air Ops Pine Gulch

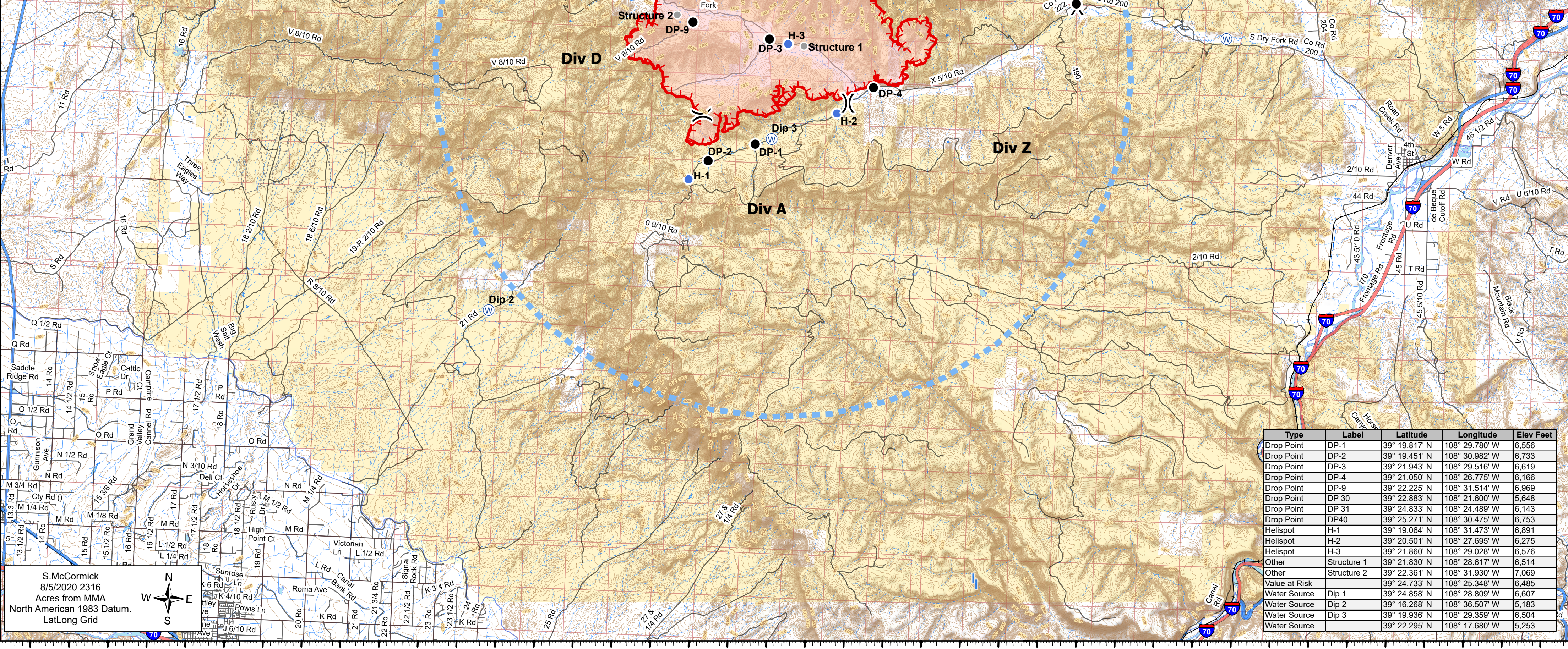
CO-GRD-000307
8/6/2020 Day

Appx 99,999 ac at Effective Date

0 0.5 1 2 3 4 Miles



- Temporary Flight Restriction (0_9074)
- Drop Point
- Helispot
- (W) Water Source
- ⚡ Value at Risk
- Other
-) Division Break
- Uncontrolled Fire Edge
- xxx Completed Dozer Line
- Wildfire Daily Fire Perimeter
- Controlled access
- Highway or ramp
- Local connector
- Local or 4WD road
- Tunnel
- Trail
- Bureau of Land Management
- Bureau of Reclamation
- Private



Type	Label	Latitude	Longitude	Elev Feet
Drop Point	DP-1	39° 19.817' N	108° 29.780' W	6,556
Drop Point	DP-2	39° 19.451' N	108° 30.982' W	6,733
Drop Point	DP-3	39° 21.943' N	108° 29.516' W	6,619
Drop Point	DP-4	39° 21.050' N	108° 26.775' W	6,166
Drop Point	DP-9	39° 22.225' N	108° 31.514' W	6,969
Drop Point	DP 30	39° 22.883' N	108° 21.600' W	5,648
Drop Point	DP 31	39° 24.833' N	108° 24.489' W	6,143
Drop Point	DP40	39° 25.271' N	108° 30.475' W	6,753
Helispot	H-1	39° 19.064' N	108° 31.473' W	6,891
Helispot	H-2	39° 20.501' N	108° 27.695' W	6,275
Helispot	H-3	39° 21.860' N	108° 29.028' W	6,576
Other	Structure 1	39° 21.830' N	108° 28.617' W	6,514
Other	Structure 2	39° 22.361' N	108° 31.930' W	7,069
Value at Risk		39° 24.733' N	108° 25.348' W	6,485
Water Source	Dip 1	39° 24.858' N	108° 28.809' W	6,607
Water Source	Dip 2	39° 16.268' N	108° 36.507' W	5,183
Water Source	Dip 3	39° 19.936' N	108° 29.359' W	6,504
Water Source		39° 22.295' N	108° 17.680' W	5,253

S.McCormick
8/5/2020 2316
Acres from MMA
North American 1983 Datum.
LatLong Grid

