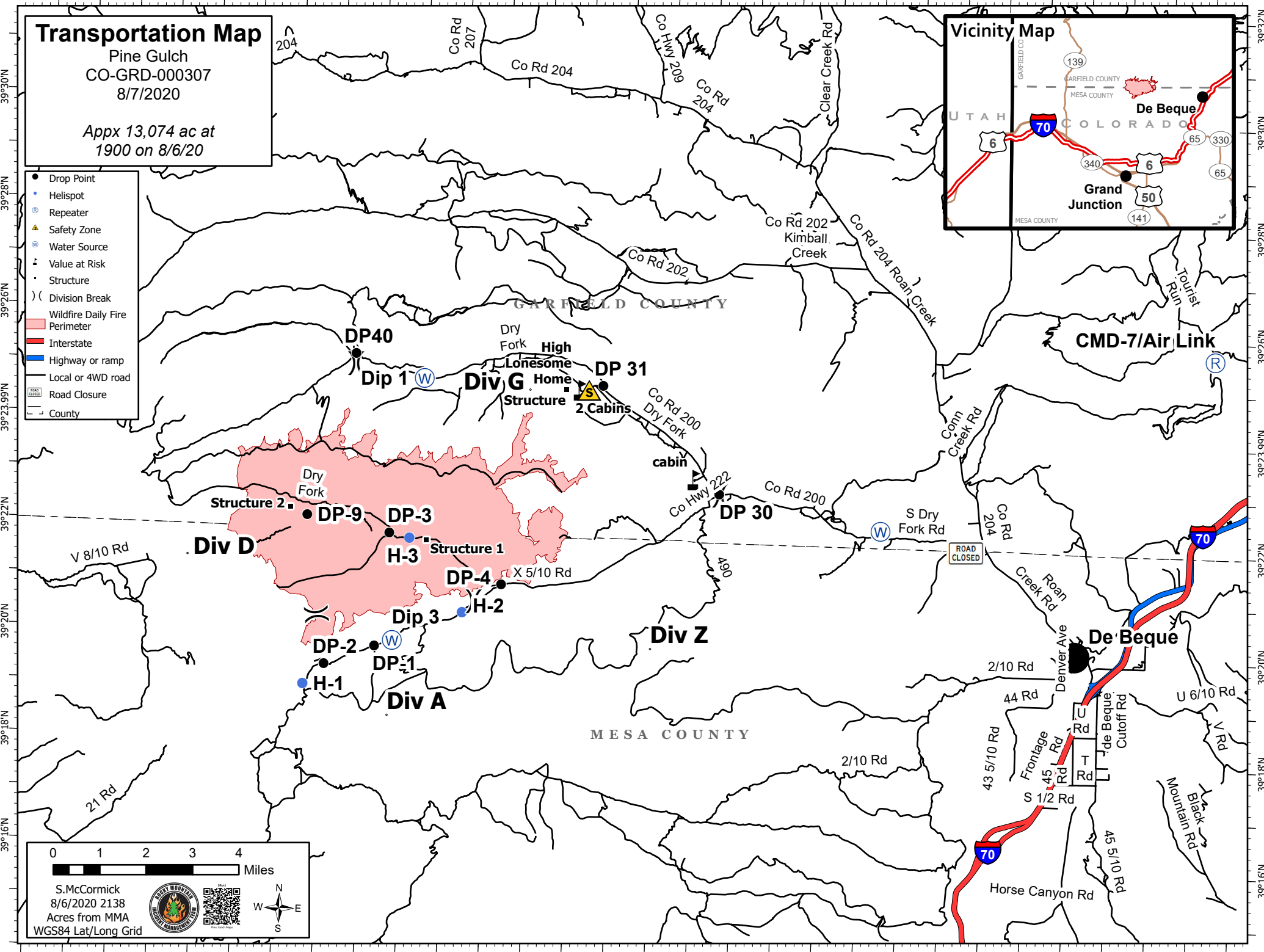
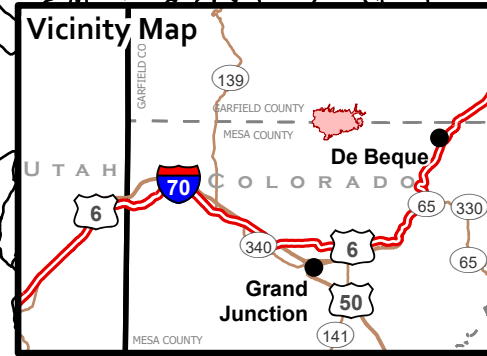


Transportation Map

Pine Gulch
CO-GRD-000307
8/7/2020

Appx 13,074 ac at
1900 on 8/6/20

- Drop Point
- Helispot
- Repeater
- ▲ Safety Zone
- Water Source
- ▲ Value at Risk
- Structure
-)) Division Break
- Wildfire Daily Fire
- Perimeter
- Interstate
- Highway or ramp
- Local or 4WD road
- Road Closure
- County



S. McCormick
8/6/2020 2138
Acres from MMA
WGS84 Lat/Long Grid

Colorado Department of Transportation logo and QR code.

